



Millionaireasia[®]

IT'S ABOUT LIVING LIFE TO THE FULLEST

SINGAPORE EDITION

Breaking the Silence

Raising Awareness on World Alzheimer's Day

From Waves to Wellness

A Breakthrough in Enhancing Cognitive Function & Well-being Using Neuro Soundwaves

**Dr. Jennifer MacDiarmid and
Dr. Himanshu Brahmbhatt**

Meet the Pioneers Behind

EnGeneIC's Game-Changing Cancer Treatment

Youthlocked

LHWY
LOVE • HEALTH • WEALTH • YOUNG

LEARN WITH US

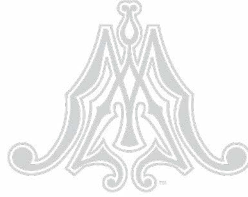
How does Youthlocked increase Biological Age?

2 Ingredients of Youthlocked that lengthens telomeres:

- 1. Mangosteen:** the concentrated juice contains GM-1, a natural substance crucial for balancing immunity.
- 2. Centella Asiatica:** possess potent antioxidant properties and aids in DNA repairs.
- 3. Guava fruit juice powder:** has a high Antioxidant capacity which reduces frailty of the consumer.
- 4. Black sesame seeds:** contain an abundance of antioxidants.
- 5. Isolated soy protein:** improves lipid profile for enhanced cardiovascular health through cholesterol management.

- 1** Youthlocked contains ingredients that has high concentrations of **anti-oxidant properties** which help to increase the lengths of telomeres in your body. Studies have shown that taking Youthlocked for a period of time can positively impact your biological age and enhance overall well-being.





Millionaireasia®

© @millionaireasia.sg

millionaireasia.com

Editor In Chief Toh Mu Qin

Editorial Contributors Angela Goh
A. Yash
Christina Yip
Debbie Tan
Dionne Bel
Ignatius Tan Gim Wee
Julia Goh
Mariah Amin
Priyanka Elhence
Rohan Jacob
Urvashi Raizada

Graphic Designer Amelia Espaldon

**Director of Operations
(Asia Pacific)** Alexis Toh

Partnering Law Firm R S Solomon LLC

**Chief Executive Officer
(Asia Pacific)** Peter Tan Shou Yi

Publisher Millionaireasia Pte Ltd
111 Somerset Road, #08-05
TripleOne Somerset
Singapore 238164
T: 65 6838 5333
Email: contact@millionaireasia.com
Website: <https://millionaireasia.com>

Printed in Singapore by Asiawide Print Holdings Pte Ltd

Millionaireasia is trademarked in 18 territories including Singapore, Malaysia, Indonesia, India, Vietnam, Cambodia, China, Hong Kong, Macau, Taiwan, Thailand, Japan, Philippines, South Korea, Australia, New Zealand, Russia and UK.

MILLIONAIREASIA IS PUBLISHED BY MILLIONAIREASIA PTE LTD (200714494D).

ALL RIGHTS RESERVED. TITLE AND TRADEMARK REGISTERED. NO PART OF THIS PUBLICATION MAY BE REPRODUCED IN ANY FORM WITHOUT THE WRITTEN CONSENT OF THE PUBLISHER. THE VIEWS AND OPINIONS EXPRESSED OR IMPLIED IN MILLIONAIREASIA ARE THOSE OF THE CONTRIBUTORS AND ADVERTISERS AND DO NOT NECESSARILY REFLECT THOSE OF THE PUBLISHER.

LHWY

LOVE • HEALTH • WEALTH • YOUNG

NEURO SOUNDWAVES THE ACTIVATOR



Contains a 25 mins
Brain Stimulator
Soundwave and a
Musical Composition
embedded with Sleep
Soundwave of
3 hours.

Improves
sleep quality,
concentration,
memory, creativity
and sensory
perception.

Member's Price

\$368



Scan and purchase
on our website now



<https://lhwy.sg/>



+65 6838 5333



enquiry@lhwy.sg

Living Luxuriously and
Responsibly Spotlighting
**Sustainable
Innovations**

by Toh Mu Qin

In this issue of Millionaireasia, we delve deep into the theme of sustainability, exploring how cover personalities Dr. Jennifer MacDiarmid and Dr. Himanshu Brahmbhatt are making significant strides in cancer treatment through their impactful work at EnGeneIC. Their commitment to global health and quality of life exemplifies how innovation can create meaningful change for the greater good.

Moving on to the world of winemaking, Pierre-Emile Humbrecht's biodynamic vineyard sets a new standard in eco-friendly winemaking. His dedication to sustainable practices not only preserves the environment but also enhances the quality and authenticity of his renowned wines.

Beyond vineyards, we navigate through a myriad of sustainable luxury options across travel, jewellery, fashion, automobiles, yachts, architecture, and dining. Each feature demonstrates the growing synergy between opulence and environmental responsibility, showcasing how luxury can harmoniously coexist with sustainability.

As we approach World Alzheimer's Day on 21 September 2024, Millionaireasia stands in solidarity by raising awareness about Alzheimer's disease. Our special feature aims to inform and empower, shedding light on advancements in treatment and caregiving strategies.

Reflecting on recent events, we highlight the Grand Opening of Woodlands Health Campus & Ren Ci Woodlands, where LHWY International Pte Ltd unveiled programmes aimed at dementia prevention and management. This initiative reflects our commitment to promoting health and well-being within our community.

Additionally, we take you inside the vibrant arts scene with a glimpse into the Grand Opening of Tang Contemporary Art, featuring insights into owner Zheng Lin's visionary approach to contemporary art curation.

As we continue, we invite you to anticipate the upcoming UltraLuxe event, where luxury connoisseurs will gather to celebrate excellence across diverse fields.

We celebrate not only the pursuit of luxury but also the commitment to preserving our planet and its resources. We hope this edition inspires you to see sustainability as an integral part of modern luxury living. 🌱

Millionaireasia®

CONTENTS

SG68 | 2024

www.millionaireasia.com



8

EVENTS GALLERY

- 8 Tang Contemporary Art Opens with Spectacular Success in Singapore
- 9 Ren Ci @ Woodlands Inaugural Event – Advancing Integrated Healthcare
- 10 An Exclusive Insight into Langham Hospitality Group’s Unprecedented Success
- 12 UltraLuxe 2024 Niche Luxury Festival – A Sparkling Showcase of Opulence & Elegance

14

MOVERS AND SHAKERS

- 14 The EDV Breakthrough – EnGeneIC is the Game-Changer in Cancer Treatment
- 26 Pierre-Emile Humbrecht – The Heart of Biodynamic Winemaking at Domaine Zind-Humbrecht
- 28 From Canvas to Curator – The Maestro Behind Tang Contemporary Art

30

LIVING LARGE

- 30 Cars: Sculptures in Motion
- 32 Cars: Lotus Eletre – A Leap into the Electric Future
- 34 Fashion: From Outer Space to Thin Air

- 36 Horology: The Bvlgari Aeterna High Jewellery Watches 2024 Collection
- 38 Jewellery: Beyond the Blue
- 40 Lifestyle: OXO Living Announces, OXO The Residences – Bali’s Newest All-Villa Project
- 42 Travel: Where Chic Meets Conservation
- 44 Travel: Eco-friendly Elegance – Discover Nirup Island’s Sustainable Luxury
- 46 Travel: Soneva Harnesses the Power of Solar Energy for More Sustainable and Eco-friendly Luxury
- 48 Travel: A Brand New Turtle-inspired Stay Awaits at Jumeirah Al Naseem
- 50 Wellness: Beyond Traditional Therapies – A Breakthrough in Enhancing Cognitive Function and Well-being Using Neuro Soundwaves
- 78 Yacht: The Timeless Appeal and Sustainable Innovations of the Greenline 48 Yachts

52

IN THE KNOW

- 52 World Alzheimer’s Day – Raising Awareness and Supporting Research
- 58 Innovative Green Architecture – Homes of the Future
- 60 The Rise of Eco-Conscious Fine Dining
- 62 Creating Generational Impact
- 66 A Sustainable Aura for the Luxury Industry
- 70 The Green Evolution – How Singapore’s Laws Foster Sustainable Living
- 74 绿色进化 – 新加坡法律如何促进可持续生活



Tang Contemporary Art

Opens with Spectacular Success in Singapore

by Alexis Toh



Tang Contemporary Art celebrated the grand opening of its newest gallery space in Singapore on 28 June 2024 with a stunning reception that drew over 200 guests, including prominent collectors, art lovers, and curators from around the globe. This event heralded a new era for both Tang Contemporary Art and Singapore's burgeoning art scene, setting the stage for future artistic endeavours in the region. It was a night where the past, present, and future of contemporary Chinese art converged, leaving an unforgettable mark on all who attended.

The gallery's new location at 402 Orchard Road, Delfi Orchard, Level 6, offers an expansive 7,500 sq ft space in the penthouse of one of Singapore's premier shopping and entertainment districts. This strategic placement ensures high visibility and accessibility, making it a prime destination for art enthusiasts eager to explore contemporary masterpieces.

Guests at the opening night were treated to a diverse and captivating exhibition featuring works from established artists like Ai Weiwei and Yue Minjun, alongside emerging talents such as Areyu Moniaga and Tiffany Lafuente. The curated collection included a mix of paintings and sculptures, each piece offering a unique narrative and perspective that resonated deeply with the attendees.

A highlight of the exhibition was Ai Weiwei's iconic zodiac head sculptures, which reinterpret the Chinese zodiac animals with profound cultural and artistic significance. These pieces exemplify Ai Weiwei's distinctive vision and meticulous

craftsmanship, capturing the attention and admiration of all present. The intricate details and symbolic richness of these sculptures provided a focal point of discussion and reflection among the guests.

This opening marks a significant step for Tang Contemporary Art, which has been at the forefront of the global contemporary art scene since its inception in 1997. Known for being one of the pioneers that inspired cultural exchange and artistic innovation, the gallery's exhibitions and programmes showcase a wide array of artistic practices, from conceptual and abstract art to socially engaged and politically charged works.

Tang Contemporary Art's commitment to fostering cross-cultural understanding and promoting contemporary art is evident in its thoughtfully curated exhibitions, publications, and educational initiatives. The new gallery in Singapore is poised to become a vibrant hub for artists, collectors, and art enthusiasts, offering a space to explore and connect with cutting-edge artworks that challenge perceptions and provoke thought.

Moving forward, visitors to the gallery can look forward to a varied range of exhibitions and events, each designed to engage and inspire. With its strategic location and robust programme, Tang Contemporary Art Singapore is set to play an important role in shaping the contemporary art discourse in Southeast Asia. This new chapter promises to bring exciting opportunities for artistic exploration and cultural enrichment to the region. 🏯



Ren Ci @ Woodlands Inaugural Event – Advancing Integrated Healthcare

by Alexis Toh

The official opening of Ren Ci @ Woodlands on 13 July 2024 was a momentous occasion. Celebrating its 30th anniversary, Ren Ci Hospital has come a long way from its humble beginnings as a 174-bed Chronic Sick Unit in 1994. The event was held in conjunction with Woodlands Health, featuring a host of dignitaries, including Senior Minister Lee Hsien Loong as the Guest of Honour, Minister for Health Ong Ye Kung, Ren Ci's Honorary Chairman Dr. Chua Thian Poh, Chairman Mr. Seow Choke Meng, board members, and esteemed stakeholders and partners.

The celebration was not just about the official opening; it was also about bringing the community together. The event was complemented by a vibrant Community Health Day carnival, organised in partnership with People's Association and Woodlands Health. Over 200 families and seniors from the neighbourhood attended, making the day truly special. The carnival featured a plethora of activities, including carnival games that brought out the child in everyone, a healthy cooking demonstration that offered valuable tips on nutritious eating, and a game of pickleball that provided a fun way to stay active.

Visitors were particularly impressed by the smart rehabilitation therapies showcased during the event. These therapies, which incorporate games and AI programmes, show Ren Ci's commitment to leveraging technology for better health outcomes. The interactive nature of these therapies not only makes rehabilitation more engaging but also more effective.

Ren Ci @ Woodlands is notable for being the first nursing home in Singapore to be part of an integrated health campus, operated by Woodlands Health. This unique setup facilitates a seamless collaboration between acute and community hospital care services. The close physical proximity to Woodlands Health allows for a more integrated approach to care, where geriatricians and palliative care teams from Woodlands Health work hand-in-hand with Ren Ci's care team.

This shared care model is designed to ensure that residents receive continuous and coordinated care, which is particularly critical for those with complex health needs. By working closely with Woodlands Health, Ren Ci is able to provide more holistic and effective care, reducing the need for multiple medications and unnecessary hospital visits. This approach not only enhances the quality of life for the residents but also promotes more efficient use of healthcare resources.

The official opening of Ren Ci @ Woodlands is a fitting celebration of Ren Ci Hospital's 30-year legacy of compassionate care. From its modest beginnings to becoming one of the leading providers of healthcare services, Ren Ci has consistently focused on the well-being of the community. The new facility at Woodlands represents the next chapter in this ongoing story of growth and service.

Looking ahead, Ren Ci Hospital is poised to continue its tradition of excellence in healthcare. The integration with Woodlands Health and the adoption of smart rehabilitation therapies are just a few examples of how Ren Ci is embracing the future of healthcare. 🏠

An Exclusive Insight into Langham Hospitality Group's Unprecedented Success

by Alexis Toh



Photos: Langham Hotels.

On 3 July 2024, the elite of Singapore's hospitality sector gathered at LeVel33, Marina Bay Financial Centre, for a luncheon hosted by Langham Hospitality Group (LHG). Overlooking the stunning Marina Bay, the event provided a unique opportunity to engage directly with LHG's senior executives and learn about the latest developments within their four renowned hotel brands. Jeffrey van Vosselen, regional vice president of operations for the Pacific, shared insights into the company's journey, strategic initiatives, and what has made this year the most successful in LHG's history.

A Storied Beginning

Langham Hospitality Group's story began in 1996 with the acquisition of The Langham, London by the Great Eagle

Group (GEG). This landmark hotel, with its roots dating back to 1865, became the flagship property and the cornerstone for LHG's global presence. Since acquiring the iconic hotel, LHG has grown into a formidable entity with 33 hotels across four continents, under four distinct brands: The Langham Hotels and Resorts, Cordis Hotels and Resorts, Eaton, and Ying'nFlo.

Diverse and Distinctive Brands

Each brand under LHG carries a unique identity and mission. The Langham exemplifies timeless luxury and classic British hospitality, enriched with Asian influences. Cordis focuses on heartfelt experiences centred on well-being and authentic local culture. Eaton, with locations in Washington

D.C. and Hong Kong, aims to uplift the human spirit and promote sustainability, transforming hospitality into a force for positive social and environmental impact. Ying'nFlo, targeted at savvy next-generation travellers, offers midscale, select-service environments that emphasise smart, social, and lifestyle-focused experiences.

Unique Selling Points

What sets LHG apart from its competitors is its "East-meets-West" experience, a seamless blend of Chinese ownership and British heritage. This unique fusion permeates every aspect of their hotels, from design and décor to dining and service. Additionally, LHG's status as an owner-operator, with about half of its portfolio owned by GEG, allows for greater agility and a deep understanding of hotel development complexities. This dual role ensures they consistently exceed guest expectations and deliver outstanding success for both their own properties and those they manage for others.

Personalised Guest Experiences

Central to LHG's service philosophy is the commitment to tailoring guest journeys to individual needs. The Brilliant by Langham loyalty and experiences platform showcases this approach, offering personalised itineraries, unique local experiences, and bespoke amenities designed to create unforgettable stays. This focus on customisation extends to their appeal to high-net-worth individuals, particularly multi-millionaires in Asia, who are drawn to the unparalleled elegance and sophistication offered by The Langham hotels.

Adapting to Market Changes

The hospitality market in Asia has evolved significantly since LHG's inception. Increased demand for personalised and experiential travel, driven by a growing middle class and rising disposable incomes, has reshaped guest expectations.



Sustainability and eco-friendly practices have also gained prominence, with travellers becoming more conscious of their environmental impact. The COVID-19 pandemic further shifted dynamics, spurring a rise in domestic tourism and necessitating adaptations to new guest preferences and demands.

Technological Innovations

Technology has played an essential role in reshaping the hospitality industry, and LHG has embraced these advancements to enhance guest experiences and operational efficiencies. From seamless check-ins and mobile room keys to AI-driven personalised services, technology has enabled LHG to deliver more connected, convenient, and customised experiences. Digital platforms and social media have also revolutionised marketing and guest engagement, allowing for real-time feedback and more precise tailoring of offerings.

Navigating Post-Pandemic Trends

The increase in remote working post-COVID has significantly impacted LHG's business dynamics, blending business and leisure travel. This trend, known as 'bleisure' travel, has led guests to extend their stays, combining work with leisure. In response, LHG has adapted its offerings to include robust Wi-Fi, comfortable workspaces, and flexible services to accommodate remote workers. Other notable trends shaping the industry include the rise of sustainable tourism, personalisation, wellness tourism, and the demand for unique local experiences.

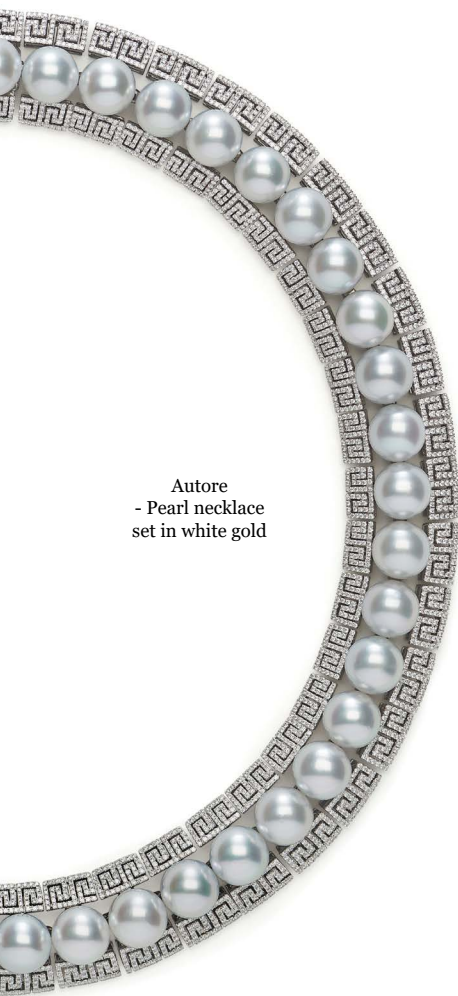
Strategic Growth and Expansion

LHG's growth and expansion strategy is robust, with a strong presence in key markets such as China, Oceania, and North America. The group continues to explore new opportunities, with recent deals and openings in China and upcoming properties in Venice and Riyadh. This strategic expansion highlights LHG's commitment to broadening its global footprint and catering to diverse traveller needs.

Overcoming Challenges

The COVID-19 pandemic posed significant challenges for LHG, as it did for the entire hospitality industry. Through innovation, cost-control measures, and an unwavering focus on guest safety, LHG navigated these unprecedented times and emerged stronger. The result was their most profitable year in history in 2023, reflecting their resilience and dedication to excellence.

Langham Hospitality Group's luncheon at LeVel33 was more than just a display of their achievements; it reflected their long-standing reputation and commitment to future growth. Engaging with senior executives provided invaluable insights into the group's strategic initiatives, unique brand offerings, and the technological and market trends driving their success. As LHG continues to expand and innovate, it remains as one of the leaders in the hospitality industry, setting new benchmarks for luxury, sustainability, and personalised guest experiences. 🏆



Autore
- Pearl necklace
set in white gold



Alexander Laut
- 29.05 cts of
Mozambique Paraiba
with 6.12 cts of diamonds
in white gold



Vihari Jewels - Butterfly
earrings with fancy coloured
and white diamonds

UltraLuxe 2024 Niche Luxury Festival

A Sparkling Showcase of Opulence & Elegance

by Alexis Toh



Angela Loh

Prepare to be dazzled as UltraLuxe 2024, Asia’s premier festival of niche luxury, returns with an extraordinary line-up that promises to captivate and inspire. From 4 to 13 October 2024, the iconic TENT@Ngee Ann City Civic Plaza will be transformed into a haven of indulgence and sophistication, featuring over 120 world-class brands and a series of curated exhibitions and experiences. This year, the spotlight shines brightly on JeweLuxe, the festival’s flagship exhibition, dedicated to showcasing the pinnacle of haute joaillerie, investible gems and bespoke jewellery creations.

JeweLuxe – A Celebration of Exquisite Jewellery

JeweLuxe, the ‘crown jewel’ of UltraLuxe 2024, is set to mesmerise collectors and connoisseurs with its unparalleled display of gems and jewellery worth over US\$200 million. The exhibition will unfold in two exciting editions, each offering a unique perspective on luxury adornments.

Edition 1 – 4 to 8 October 2024

The first edition of JeweLuxe will feature four distinct themes, each presenting a curated selection of exceptional pieces from renowned jewellery houses and independent designers.

1. **The Protagonist** – Celebrating its 10th year, The Protagonist showcases fine jewellery crafted with mindful practices, responsible sourcing, and sustainability. Making its debut in Singapore, this internationally acclaimed event brings together exquisite creations that embody ethical luxury.

2. **Gemagical** – Discover a mesmerising collection of rare and unique gems transformed into works of art by celebrated jewellery houses from Asia, Europe, and the UAE. Brands such as Alexander Laut (USA), Autore (Australia), Renee Jewellers (UAE), B.P. De Silva (Singapore), and Caratell (Singapore) will present their most sought-after pieces, each telling a story of exceptional craftsmanship and audacious style.
3. **Modernissimo** – This theme brings together iconic European jewellery houses and designers like Fope (Italy), Unsaid (France), Akillis (France), and Paolo Costagli (Italy). Their cutting-edge creations have graced internationally acclaimed stores, auction houses, and design museums, showcasing the height of contemporary elegance and innovation.
4. **Nouveau Asia** – Highlighting the talent and creativity of local designers, Nouveau Asia features distinctive design narratives and craftsmanship from renowned names like Simone Jewels (Singapore) and Calla Lily (Singapore). The exhibition also showcases unique and rare propositions from Asian talents in Taiwan and Bhutan, offering a fresh perspective on luxury jewellery.

Edition 2 – 9 to 13 October 2024

The second edition of JeweLuxe shifts focus to ready-to-wear jewellery for everyday styling, with two captivating themes.

1. **Style Inc** – Elevate your everyday style with fashion-forward jewellery pieces that make iconic statements. This section features trending vintage house Bakhache (Australia) and fashion-conscious labels such as Faipo (HK), Kevork Khatcherian (Lebanon), and La Joie (Singapore), offering a blend of sophistication and modernity.



Azimuth - The Land Cruiser

2. **Glamora** – Indulge in a high-octane selection of jewellery from internationally renowned labels and iconic pieces by independent designers that have endured through time. Glamora promises to be an alluring display of elegance and timeless beauty.

A Festival of Luxury and Lifestyle

UltraLuxe 2024 is not just about jewellery; it is a comprehensive celebration of niche luxury across four pillars – JeweLuxe, Homme, Advocacy, and DineLuxe. Each pillar offers a unique experience designed to inspire, indulge, and invest in the finest expressions of purposeful luxury.

Homme – Curated Exclusively for Men

Homme is a lifestyle social space tailored for discerning men, featuring the Ultra Bar, ChronoSphere, and StyleSphere lounges. Visitors can explore sophisticated interests and passions, from meticulously crafted timepieces to elegant fashion and leisure brands. The Ultra Bar, conceived by acclaimed designer Elliot Barratt of Elliot James Interiors, offers rare and exquisite wines and spirits, creating a paradise for connoisseurs.

Advocacy – Collective Insights and Elevated Inspirations

In partnership with CIMB, UltraLuxe presents Advocacy panel discussions, a platform for pioneering game changers and tastemakers to share their journeys in self-growth, business, and industry. These discussions, along with masterclasses, delve into the nuances of niche luxury, personal branding, beauty, wellness, sustainability, and philanthropy.

DineLuxe – A Culinary Extravaganza

New to UltraLuxe 2024, DineLuxe celebrates Singapore's culinary talents and gastronomical creations. Chefs specialising in Italian and Eurasian cuisine will curate menus embodying the theme "Purism in Culinary", blending luxury with the finest culinary traditions. This gastronomical journey promises to be a feast for the senses.

Join the UltraLuxe Experience

As Singapore's premier lifestyle social festival, UltraLuxe 2024 is supported by the Singapore Tourism Board, enhancing the city's reputation as a global luxury destination. This year's festival promises to inspire new concepts of luxury, indulge connoisseurs and collectors, and elevate the desire to invest in luxury for long-term value preservation.

Mark your calendars from 4 to 13 October 2024, and immerse yourself in the world of UltraLuxe, where the finest in jewellery, fashion, timepieces, and culinary delights await. Whether you're a collector, connoisseur, or simply an admirer of luxury, UltraLuxe 2024 offers an unrivalled experience of opulence and elegance. 🏠

The EDV Breakthrough EnGeneIC is the Game-Changer in Cancer Treatment

by Toh Mu Qin

Insights into the EnGeneIC Dream Vector (EDV) Technology and Its Impact on the Future of Cancer Therapy.

Cancer is a global health crisis that continues to affect millions of lives each year. According to statistics from the World Health Organisation (WHO) and the International Agency for Research on Cancer (IARC), in 2022, there were an estimated 20 million new cancer cases and 9.7 million cancer-related deaths worldwide. Despite advancements in medical science, the fight against cancer remains daunting, with approximately 1 in 5 people expected to develop cancer during their lifetime. The survival rate has improved, with about 53.5 million individuals alive five years after a cancer diagnosis. However, the prevalence of the disease stresses the urgent need for more effective and targeted treatment options.

Cancer patients are not only faced with financial stress, but also immense emotional stress. When a doctor informs the patient that he/she has cancer, it can be the most frightening day of their lives. The first few questions are always, “What are the side effects of my treatment? Will I lose my hair? Will I be sick all the time? How will it interfere with my daily life?” Next, there are questions about the cost of treatment, not only immediate costs but the ongoing cost of after-care. Cancer not only affects the patient, but involves the entire circle of people surrounding them, especially those who love them. Some patients may even suffer from depression where they shut themselves away from the whole world and live in seclusion. The economic cost of the unintended consequences for cancer patients far exceeds the financial cost.

Traditional cancer treatments, such as surgery, radiation therapy, and chemotherapy, have been the mainstays of oncology for decades. Surgery and radiation are effective for localised cancers, but they often fall short in cases where the disease has spread. Chemotherapy, while crucial for treating various cancers, is notorious for its broad toxic side effects, which damage healthy cells and cause significant discomfort for patients. In addition, the increase in toxicity in the patient’s body may cause organ and immune cell damage allowing relapse and resistance to further treatment.

Recent years have seen the rise of targeted therapies and immunotherapies. Targeted therapies are designed to interfere with specific molecules involved in cancer growth, while immunotherapies aim to harness the body’s immune system to combat the disease. Although these therapies represent significant advancements, they are not without their own set of challenges. Targeted therapies are not effective for all cancer types or patient populations, and immunotherapies can sometimes lead to severe side effects and also have limited application to certain tumour types.

Pioneering a Breakthrough Approach to Cancer Care

EnGeneIC, a biopharmaceutical company co-founded by Dr. Jennifer MacDiarmid and Dr. Himanshu Brahmbhatt, has developed the EDV technology that promises to transform the future of cancer treatment, offering hope to millions of patients worldwide. EnGeneIC, as the name implies, is Entry of Genes into Cancer cells. The story of EnGeneIC began with a shared vision between these two accomplished scientists. Their journey, shaped by personal experiences and professional aspirations, was driven by their commitment to advancing medical science and improving patient outcomes and quality of life.



Photo: EnGeneIC



Dr. MacDiarmid's scientific journey began far from the laboratory, on a sheep farm in Sydney, Australia. Growing up, she was fascinated by the natural world. Her early exposure to science came from hands-on experiences with her father, as they examined parasites affecting their sheep under microscopes and captured the night sky through time-lapse photography. This early curiosity led to formal studies in molecular biology, culminating in her M.Sc. and Ph.D. from the University of New South Wales in Sydney. Before joining the Commonwealth Scientific and Industrial Research Organisation (CSIRO), Dr. MacDiarmid worked on allergic diseases, bridging the gap between basic science and its application in immunology.

Dr. Brahmbhatt, on the other hand, had a more tumultuous start. Raised in Mombasa, Kenya, he faced significant health challenges, including frequent bouts of malaria and high blood pressure from a young age. Despite these obstacles, he pursued higher education in India, where he completed his bachelor's and master's degrees before embarking on a Ph.D. in Australia. His research took him to Germany and Switzerland, where he focused on vaccines against bacterial

diseases. However, his personal experiences with illness and his desire for more complex challenges led him to switch focus to parasitic diseases. His career path eventually brought him to CSIRO in Sydney, where he led a team working on vaccines against parasites.

It was at CSIRO where Dr. MacDiarmid and Dr. Brahmbhatt's paths crossed. Though they worked in different laboratories, it took a tragic event to catalyse a connection between them. Dr. Brahmbhatt's technician, a highly skilled individual from Hong Kong, was diagnosed with terminal lung cancer. This personal tragedy struck a chord with both scientists, and they strongly felt that if their research efforts could not help people in desperate situations then their own lives had no purpose. Both careers took a swift turn, and the focus changed to cancer research. Starting with a clean slate, they brainstormed about all the pitfalls in cancer treatment and a search for a unified solution to address as many of the problems as possible. Their combined resolve led them to explore the potential of bacterially derived nanocell carriers for genetic materials, an idea that would eventually become the foundation of EnGeneIC.



Photo: EnGeneIC

Although faced with the intimidating prospect of leaving secure senior scientist jobs, Drs. MacDiarmid and Brahmhatt made the bold decision to resign from CSIRO. With no guaranteed funding but a powerful vision, they embarked on a challenging journey to raise seed funding for EnGeneIC. Their persistence and belief in their mission paid off as they secured initial funding of AU\$4 million, setting the stage for the company to make a significant impact on cancer treatment.

At the core of EnGeneIC's innovation is the Antibody-Nanocell-Drug Conjugate (ANDC) technology, which represents a significant leap forward in the field of cancer treatment. This technology involves the creation of non-living, bacterially derived nanocells that can be loaded with therapeutic agents and precisely targeted to cancer cells. The process begins with the use of a genetically engineered strain of *Salmonella typhimurium* bacteria, which can divide at its poles, generating uniform nanocells with a diameter of approximately 400 nanometres (nm), too small to carry a chromosome and hence cannot replicate.

These nanocells, designated as EDVs (EnGeneIC Dream Vectors), are safe and non-toxic in humans. They are characterised by a robust double-walled membrane, which provides stability for any payload. Each EDV has the capacity to carry up to 1 million drug molecules or 10,000 siRNA copies, making it a powerful vehicle for delivering therapeutic payloads.

One of the most striking features of the ANDC technology is its use of a bispecific antibody that binds to both the nanocell and the cancer cell surface. Once injected into the body, the EDV navigates through the blood stream and falls out of the leaky blood vessels that always surround the tumour. This passive targeting is a great advantage for safety since at 400 nm, the EDV cannot escape normal blood vessels where

the gaps are 100 nm or less. Once in the tumour micro-environment, the targeting antibody binds to the cancer cell surface receptor, and this triggers the cancer cell into swallowing the antibody-targeted, drug-packaged EDVs. Once inside the cancer cell, the EDVs are broken down and release their payload, leading to the destruction of the tumour cells. This approach not only maximises the precision and effectiveness of cancer treatment but may also minimise the collateral damage often associated with conventional cancer treatments. Simultaneously, because the EDV is derived from bacteria, it stimulates a potent anti-cancer immune response and recruits new "fighter" white blood cells to flood into the body from the bone marrow and invade the tumour environment to swallow dying cancer cells and display cancer components to killer T-cells. This results in a knockout punch to the tumour by killing tumour cells directly and then training immune cells to recognise residual tumour.

The Unique Strengths of EDV Technology Explained

EDV technology offers several unique advantages compared to other cancer treatment modalities. Unlike synthetic nanoparticles, targeted drugs, immunotherapies, and antibody-drug conjugates, EDVs can target a broad range of cancers by simply changing the bispecific antibody that coats the EDV surface and hence are able to be targeted to any cancer. They can be packaged with a range of different therapeutic payloads such as anti-cancer drugs, nucleic acids or immune stimulating adjuvants resulting in the ability to stimulate the desired type of anti-cancer response. EDVs avoid entry into normal tissues due to their large size (400 nm) and enter into the cancer microenvironment via the tumour associated leaky blood vessels which avoids damage to normal tissues. The EDVs are only taken up inside the cancer cells since they carry the tumour-targeting antibody and are broken down inside the cancer cell, releasing the toxic payload intracellularly. This avoids any collateral damage even if the cancer is located in very vulnerable locations like the brain. EDV therapeutics are the first to show minimal to no toxicity in cancer patients despite many patients receiving 50 to 80 repeat doses. Now, we have a treatment that possibly eliminates the fear of horrible toxicity when one is diagnosed with cancer.

Furthermore, EDVs are able to effectively target and kill multi-drug-resistant cancers with a super-cytotoxic payload (unable to be given systemically). There is no other therapy that can overcome multiple drug resistance mechanisms that are elaborated by cancer cells. This drug resistance means the cancer keeps coming back despite different treatments. EDVs also activate a wide range of tumour-fighting immune cells, enhancing the body's natural anti-tumour defence mechanisms. Another important advantage is affordability. Many novel cancer treatments, such as immunotherapies, can be prohibitively expensive, often exceeding US\$200,000 per patient per year. EDVs are relatively inexpensive to manufacture and hence can be made affordable worldwide.

In addition, EDVs have demonstrated potential in treating end-stage cancer patients who have exhausted all other treatment options. Clinical trials have shown that EDVs can provide therapeutic benefits even in cases where other therapies have failed, highlighting their potential to offer new hope to patients with advanced metastatic and low survival cancers.

A Path Defined by Resilience and Discovery

However, the development of EDV technology has been a long, arduous journey for Dr. MacDiarmid, Dr. Brahmbhatt, and their team at EnGeneIC. Over the past two decades, they have faced numerous challenges, from financial constraints to the complexities of bringing a novel technology to market.

Drs. MacDiarmid and Brahmbhatt's dedication to their work is evident in their personal sacrifices. During difficult times, such as the Lehman Brothers crisis in 2008 and the COVID-19 pandemic, they took pay cuts and even went without pay to ensure that their team could stay together and continue working. This commitment to their team and their unwavering belief in their mission have enabled them to develop resilience and overcome obstacles to progress the EDV technology into the clinic.

EDV's Potential Confirmed by Clinical Trials and FDA Fast-Tracking

EDV technology has shown great promise in pre-clinical and clinical trials. The data has been published in numerous peer-reviewed, high impact scientific and clinical journals. The most significant results have come from trials focused on treating pancreatic ductal adenocarcinoma (PDAC), one of the most aggressive and deadly forms of cancer. The positive outcomes from these trials led to the United States Food and Drug Administration (FDA) granting Fast-Track Designation for EDV-based treatment of PDAC, affirming the potential of this technology to address unmet medical needs in low survival cancers.

The early successes emerging from EnGeneIC's clinical trials offer new hope for cancer patients worldwide. For instance, a woman in Los Angeles undergoing EDV treatment was able to take a month-long vacation to Paris during her therapy, an unimaginable scenario with traditional cancer treatments. This lady is now in complete remission 26 months since the start of EDV treatment. Another end-stage mesothelioma patient showed a near complete elimination of the tumour in his lungs, a result so unprecedented that the oncologist ran down the hospital corridor waving the scan result in disbelief. In a small trial in USA, an end-stage glioblastoma patient who was paralysed waist-down, made a dramatic recovery following EDV treatment and the startling news was reported as a story by CBS television in USA.

Despite these successes, EnGeneIC has also faced significant challenges in bringing its technology to market. The path

to FDA approval is long and fraught with hurdles, and the company is still navigating this complex landscape. However, the potential of EDV technology to significantly improve cancer treatment is undeniable, and EnGeneIC is committed to making this life-saving therapy accessible to patients worldwide.

EDV Technology for Global Application

As EnGeneIC moves closer to commercialising its EDV technology, the company faces the challenge of scaling its operations to meet global demand. One of the key concerns is ensuring that the technology remains affordable and accessible to patients worldwide, particularly in developing countries where access to advanced cancer treatments is often limited.

EnGeneIC has made it a priority to keep the cost of EDV treatment significantly lower than other immunotherapies currently on the market. By carefully managing production and development costs, the company aims to make EDV therapy accessible to a broad range of patients.

The potential market for EDV technology is vast, given the global burden of cancer. With over 200 different types of cancer, the demand for effective and safe treatments is enormous. EDV technology, with its ability to target multiple types of cancer and its reduced toxicity, positions the company to capture a significant share of the global cancer treatment market.

EnGeneIC's technology also holds particular appeal for high-net-worth individuals (HNWIs) and ultra-high-net-worth individuals (UHNWIs), especially in Asia. The ability to offer cutting-edge cancer treatment with minimal side effects and the promise of an improved quality of life is likely to resonate with affluent patients seeking the best possible care, and those who wish to put something back into their communities. Additionally, the company's focus on expanding access to its technology in Asia, including countries like Hong Kong, Singapore, China, Malaysia, and Indonesia, showcases its commitment to making a global impact.

The Emergence of Theragnostic in Cancer Care

EnGeneIC is also exploring the exciting field of theragnostics, which combines therapy and diagnostics in one seamless approach. The concept involves using the EDV technology to not only diagnose tumours but also deliver targeted therapy simultaneously. For example, by attaching a radioisotope to the EDV, clinicians can light up the tumour for imaging while delivering a potent therapeutic payload to the cancer cells. This dual functionality maximises the efficiency of cancer treatment, allowing for real-time monitoring of therapeutic effectiveness and reducing the need for multiple procedures.

EnGeneIC is also investigating the integration of boron into EDVs for cancer treatment, particularly for brain, head and

neck cancer. Boron neutron capture therapy (BNCT) is a promising approach that involves delivering boron to cancer cells and then irradiating the area with a neutron beam to trigger the release of alpha particles, which can directly kill cancer cells to prevent its scatter throughout the body and to accumulate sufficient boron in the cancer cells for BNCT to be effective. EDV technology has demonstrated the ability to load boron effectively and is now conducting pre-clinical studies on delivering it to cancer cells, potentially opening as yet untried, new avenues for EDVs.

Strategic Collaborations and Market Potential

The potential of the EDV technology has attracted significant interest from investors and strategic partners. One of the notable collaborations is with the Singapore Institute of Advanced Medicine Holdings (SAM Holdings). This partnership is poised to significantly advance cancer treatment in Asia and offers several key benefits.

The agreement between SAM and EnGeneIC envisages exclusive distribution rights for EDV cancer therapeutics in 17 countries in Asia. Additionally, the two parties will collaborate on the development of EDV-based theragnostic, and imaging agents. This partnership represents a dual-pronged expansion of revenue streams through a profit-sharing agreement and is aligned with SAM Holdings' core vision of investing in next-generation technologies, especially in the area of cancer treatment.

The collaboration also aims to enhance Singapore's position as a leading medical tourism hub by bringing cutting-edge cancer treatments to the region. SAM Holdings will support EnGeneIC in securing funding and regulatory approvals for establishing a manufacturing plant in Singapore, conducting clinical trials, and obtaining market authorisation for EDV-based products.

The potential value of EnGeneIC is staggering. Drs. MacDiarmid and Brahmhatt have resisted offers to sell the company, recognising that its true value has yet to be realised. Their decision to hold on to their technology reflects their confidence in its potential and their commitment to ensuring that it reaches its market success. As EnGeneIC moves closer to securing regulatory approvals and scaling its operations, its valuation could skyrocket, offering significant returns to investors and stakeholders.

Comparisons to other biotech companies that have been acquired for billions of dollars emphasise the immense potential of EDV technology. For example, Pfizer's \$43 billion acquisition of Seagen, a company with a standard ADC platform, highlights the market's appetite for innovative cancer treatments. Similarly, Merck's checkpoint inhibitor, Keytruda, which has been approved for over 17 different cancers, generates \$20 billion in annual revenue despite its possible toxic side effects.



Photo: EnGeneIC

EnGeneIC, with its non-toxic, versatile platform capable of targeting multiple cancers, could easily surpass these benchmarks. The company's extensive patent portfolio, which includes over 200 granted overlapping patents and covers numerous aspects of its technology, further reinforces the valuation. EnGeneIC is the sole owner of this patent portfolio, and the patent life currently extends out to 2042, and is expected to exceed 2050 with several new patent families yet to be filed. These patents, coupled with EnGeneIC's confidential know-how, create a formidable barrier to entry for potential competitors, and position the company for long-term success.

Exploring Future Prospects for EnGeneIC and EDV

As EnGeneIC continues to advance its EDV technology and expand its reach, the future holds exciting possibilities for further innovation and impact. The company's ongoing research and development efforts, coupled with its dedication to addressing global health challenges, position it as one of the leaders in the next generation of cancer treatment. The ability of EDV technology to deliver therapeutic agents with high precision, overcome drug resistance, stimulate an anti-tumour immune response and provide affordable treatment options, highlights its potential to become a cornerstone of future oncology care.

Looking ahead, EnGeneIC's vision for the future encompasses not only enhancing the effectiveness of EDV technology but also exploring new applications and integrating with other emerging technologies. By focusing on personalised medicine, theragnostic approaches, and global accessibility, the company aims to meet the diverse needs of cancer patients and propel advancements in oncology.

For HNWI, UHNWI and stakeholders, the opportunity to support and be part of EnGeneIC's journey represents a chance to contribute to an unprecedented major movement

in cancer care. The potential for highly significant returns, both in terms of financial value and societal impact, highlights the importance of continued investment and support for innovative technologies like EDV. The future of a cure for cancer is bright, with EDV technology leading the way toward a new era of personalised and effective treatments.

Personal Philosophies and Professional Advice from Dr. MacDiarmid and Dr. Brahmbhatt

Dr. MacDiarmid and Dr. Brahmbhatt have achieved remarkable milestones in their careers, with the establishment of EnGeneIC and successful development of EDV technology being their most significant professional accomplishments. Dr. MacDiarmid emphasises the impact of their work on patients' lives and the positive results observed in clinical trials. Dr. Brahmbhatt highlights their resilience through challenging periods, including financial difficulties and global crises, demonstrating their commitment and perseverance. Both strongly feel that to see a genuine smile of relief on the faces of cancer patients is itself worth a fortune and if that is achieved, a material fortune should follow and for investors, the dual win would make EnGeneIC their most satisfying investment.

For young scientists and entrepreneurs aspiring to make a difference in the medical field, Dr. MacDiarmid and Dr. Brahmbhatt offer valuable advice. Dr. MacDiarmid advocates for the importance of forging strong partnerships and remaining resilient, encouraging others to seek collaborators who share their vision and to maintain adaptability in the face of challenges. Meanwhile, Dr. Brahmbhatt stresses the need for thorough preparation and flexibility, advising aspiring entrepreneurs to embrace adversity as an opportunity for growth and innovation.

Dr. Brahmbhatt shared a pivotal experience from EnGeneIC that exemplifies this perspective. "Adversity is the mother of invention. People must learn to be resilient and persevere through difficulties," he remarked. During the COVID-19 pandemic, while EnGeneIC was primarily focused on cancer treatment, the team had a sudden realisation about the potential for infectious disease vaccines. This insight

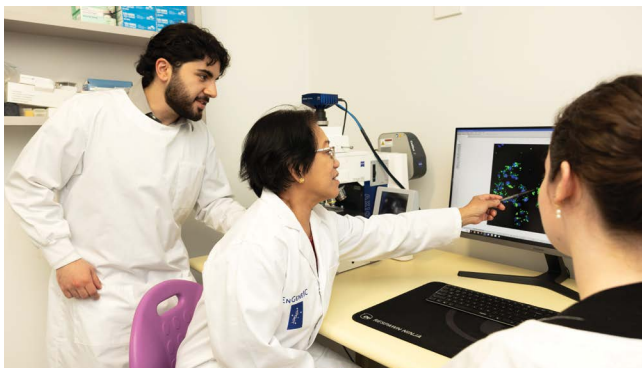


Photo: EnGeneIC

led them to develop a novel vaccine within a month, which dramatically illustrated EnGeneIC's ability to pivot into new areas and increase the company's value.

The EDV-COVID vaccine which emerged, offers several distinctive advantages over existing vaccines. It provides effective protection against all mutant strains of the virus and has the capability to carry multiple antigens from different viruses, reducing the need for multiple vaccines. The EDV vaccine also offers long-lasting immune protection, thereby minimising the need for frequent booster shots. Unlike conventional vaccines that require storage and transportation at extremely low temperatures, the EDV vaccine can be stored and transported at room temperature. Furthermore, it boasts a shelf life of over four years, significantly longer than the six months to one year typical for current vaccines. Additionally, the EDV vaccine provides protection not only systemically but also through intranasal administration, offering enhanced defence against respiratory viruses.

EnGeneIC's Phase I and Phase II(A) clinical trials for the EDV-COVID vaccine, conducted with 80 healthy volunteers, confirmed that the vaccine's efficacy matched the results from pre-clinical studies. This vaccine provides proof-of-concept for a variety of vaccines which do not address mutant strains nor emerging pandemics. This experience illustrates how facing adversity can lead to thinking outside the box which can result in remarkable innovations and reinforces the company's confidence in the potential of their technology.

Their personal philosophy at EnGeneIC centres on the belief that everyone is equal and essential to the team's success. They believe in the importance of teamwork and patience, recognising that long-term achievements are the result of collective effort and dedication.

Closing Reflections

EDV technology represents a key advancement in the fight against cancer, offering a novel and highly effective approach to targeted therapy. With its precision targeting, reduced toxicity, waking up of the anti-cancer immune system and potential for broad applications, EDV technology has the power to drastically improve cancer treatment and enhance the quality of lives of millions of patients worldwide.

As EnGeneIC moves forward with its mission, the potential of EDV technology remains promising, offering hope for a future where cancer can be treated with greater precision, effectiveness, and compassion. For those looking to support the next frontier of cancer treatment, EnGeneIC represents a compelling opportunity to be part of a meaningful journey that could make a lasting impact on the world. 🌱

Disclaimer: The health information in this article represents the EnGeneIC scientists and author's personal opinions. It does not constitute medical or professional services. Always consult your doctor or qualified healthcare provider if you have any specific healthcare needs.

EDV技术的突破性发展 – EnGeneIC: 癌症治疗领域之游戏 规则改变者

作者 Toh Mu Qin

深入了解 EnGeneIC Dream Vector (EDV)技术 及其对未来癌症治疗的影响

癌症是全球性的健康危机，每年影响数百万人的生命。根据世界卫生组织 (WHO) 和国际癌症研究机构 (IARC) 的统计数据，2022 年全球预计新增癌症病例 2000 万例，癌症相关死亡人数 970 万例。尽管目前医学科学取得了显著进步，但抗击癌症的斗争仍然艰巨，预计约五分之一的人口终其一生将会患上癌症。虽然目前癌症的存活率有所提高，约有 5350 万人在被诊断出癌症后五年内仍能存活。但是癌症的流行更加凸显了对更有效、更有针对性的治疗方案的迫切需求。

癌症患者不仅面临经济压力，还面临巨大的情感压力。当医生告知患者他/她们患有癌症时，这可能是他们一生中最可怕的一天。第一个问题总是治疗的副作用是什么？——我会掉头发吗？我会一直生病吗？它会如何影响我的日常生活？接下来是治疗费用的问题，不仅是即时治疗的费用，还有后续护理的持续费用。癌症不仅影响患者，还涉及他们周围的所有人，尤其是那些深爱他们的人们。一些患者甚至可能患上抑郁症，把自己与整个世界隔离开来，过着隐居的生活。癌症患者意外后果的经济成本远远超过癌症治疗本身的财务成本。

几十年来，传统的癌症治疗方法，如手术、放疗和化疗，一直是肿瘤治疗的支柱。手术和放疗对局部癌症有效，但在疾病已经扩散的情况下，它们往往达不到治疗效果。化疗虽然对治疗各种癌症至关重要，但因其广泛的全身副作用而臭名昭著，它会损害健康细胞并给患者带来极大的不适。此外，药物副作用对患者机体的损害可能导致器官和免疫细胞损伤，从而导致癌症复发和对进一步治疗的拮抗。

近年来，靶向疗法和免疫疗法逐渐兴起。靶向疗法旨在干扰参与癌症生长的特定分子，而免疫法则旨在利用人体的免疫系统来对抗疾病。尽管这些疗法代表了重大进展，但它们也存在一系列难题。靶向疗法并非对所有癌症类型或患者群体都有效，而免疫疗法有时会导致严重的副作用，并且对某些肿瘤类型的应用也有所限制。

开创突破性的癌症治疗

EnGeneIC 是一家由 Jennifer MacDiarmid 博士和 Himanshu Brahmhatt 博士共同创立的生物制药公司，该公司开发的 EDV 技术有望改变癌症治疗的未来，为全球数百万癌症患者带来希望。EnGeneIC, Entry of Genes into Cancer cells, 顾名思义，就是诱导基因进入癌细胞。EnGeneIC 的创立始于这两位杰出科学家的共同愿望。他们的人生旅程由他们的个人经历和职业抱负所塑造，由他们对推动医学科学发展和改善患者治疗效果及生活质量的承诺所驱动。



Photo: EnGeneIC



MacDiarmid博士的科学之旅始于远离实验室，澳大利亚悉尼的一个牧羊场。在成长过程中，MacDiarmid博士对自然界非常着迷。她早期接触科学的经历来自于与父亲的亲身体会，他们在显微镜下检查感染羊群的寄生虫，并通过延时摄影捕捉夜空。这种早期的好奇心促使她正式研究分子生物学，并最终在悉尼新南威尔士大学获得硕士和博士学位。在加入澳大利亚联邦科学与工业研究院（CSIRO）之前，MacDiarmid博士致力于过敏性疾病疫苗的研究，弥补了免疫学中基础科学与应用科学之间的差距。

而Brahmbhatt博士的起步则更加坎坷。他在肯尼亚的蒙巴萨长大，从小就面临着严重的健康问题，包括经常患疟疾和高血压。尽管面临这些困难，Brahmbhatt博士还是前往印度继续深造，在那里完成了学士和硕士学位，然后在澳大利亚攻读博士学位。之后他前往德国和瑞士进行研究，在那里专注于细菌性疾病疫苗的研究。然而，他个人的患病经历和他对更复杂挑战的渴望使他

将研究重点转向寄生虫疾病。他的科学研究最终将他带到了澳大利亚联邦科学与工业研究院（CSIRO），在那里他加入了一个研究寄生虫疫苗的团队。

正是在澳大利亚联邦科学与工业研究院，MacDiarmid博士和Brahmbhatt博士相遇了。尽管他们在不同的实验室工作，但一场悲剧事件促使他们走到了一起。Brahmbhatt博士团队的一名来自香港的高极技术员，被诊断出患有晚期肺癌。这场个人悲剧让两位科学家都感同身受，他们强烈地感觉到，如果他们的研究工作无法帮助处于绝境的人们，那么他们自己的生活也就没有特别的意义。两人的职业生涯迅速转向，重点转向癌症研究。他们从零开始，集思广益，探讨了癌症治疗的所有难题，并寻找统一的解决方案来解决尽可能多的问题。他们共同的决心促使他们探索运载遗传物质的细菌载体的特殊潜力，这个想法最终成为EnGeneC的研究基础。



Photo: EnGeneIC

尽管如果离开稳定的高级科学家职位，他们将面临着无法确认的职业前景，但 MacDiarmid 博士和 Brahmbhatt 博士还是做出了大胆决定，从 CSIRO 辞职。在没有资金保障的情况下，他们怀揣着强大的愿望，踏上了为 EnGeneIC 筹集种子资金的艰难旅程。他们的坚持和对使命的信念得到了回报，他们获得了 四百万澳币的初始资金，为公司在癌症治疗方面发挥重大作用奠定了基础。

EnGeneIC 创新的核心是抗体-纳米细胞-药物偶联物 (ANDC) 技术，该技术代表了癌症治疗领域的重大飞跃。这项技术涉及创造无活性，细菌衍生的纳米细胞。这些纳米细胞可以加载肿瘤治疗药物并精确靶向癌细胞。该技术始于使用一种经过基因工程改造的鼠伤寒沙门氏菌菌株，该菌株可以在其两极分裂，产生直径约为 400 纳米的均匀纳米细胞，这种纳米细胞太小而无法携带染色体，因此无法复制。

这些纳米细胞被称为 EDV (EnGeneIC Dream Vectors)，对人体安全无毒。它们的特点是坚固的双层膜，可为任何潜在的有效载荷提供稳定性。每个 EDV 可携带多达 100 万个药物分子或 10,000 个 siRNA 拷贝，使其成为运送治疗载荷的强大载体。

ANDC 技术最引人注目的特征之一是它使用了一种双特异性抗体，这种抗体可以同时与纳米细胞和癌细胞表面结合。一旦注射到体内，EDV 就会通过血流，从肿瘤

周围的渗漏血管中渗透至肿瘤微环境。这种被动靶向在用药安全方面具有很大的优势，因为正常血管间隙通常是 100nm 或更小，400nm 的 EDV 无法渗透出正常血管。EDV 一旦进入肿瘤微环境，靶向抗体就会与癌细胞表面受体结合，从而触发癌细胞吞噬抗体靶向的 EDV。一旦进入癌细胞，EDV 就会分解并释放其有效载荷，从而破坏肿瘤细胞。这种方法不仅最大限度地提高了癌症治疗的精确度和有效性，而且还最大限度地减少了传统癌症治疗中经常出现的副作用损害。

同时，由于 EDV 源自细菌，因此它能够刺激强大的抗癌免疫反应，并招募新的“抗癌斗士”抗癌白细胞，抗癌白细胞从骨髓进入体内循环，侵入肿瘤环境，吞噬垂死的癌细胞，并向杀伤性 T 细胞展示癌症成分。这种抗癌免疫反应不仅可以直接杀死肿瘤细胞，并且能够训练免疫细胞识别残留肿瘤细胞，从而对肿瘤造成致命一击。

EDV 技术的独特优势

与其他癌症治疗方式相比，EDV 技术具有多项独特优势。与合成纳米颗粒、靶向药物、免疫疗法和抗体-药物偶联物不同，EDV 只需改变覆盖 EDV 表面的双特异性抗体，即可靶向多种癌症，因此能够靶向治疗任何癌症。它们可以与各种不同的治疗载荷一起包装，例如抗癌药物、核酸或免疫刺激佐剂，从而能够刺激所需类型的抗癌反应。EDV 由于尺寸较大 (400nm)，因此不会进入正常组织，仅通过肿瘤周围的渗漏血管进入肿瘤微环境，从而避免对正常组织造成损害。EDV 仅进入癌细胞内部，因为它们携带靶向肿瘤细胞的抗体，并在癌细胞内部分解，在细胞内释放细胞毒性的治疗载荷。即使肿瘤位于非常敏感的位置 (如大脑内部)，也可以避免任何附带损害。尽管许多患者接受了 50 至 80 次重复剂量治疗，但 EDV 疗法是第一个对癌症患者表现出极小毒性甚至无毒性的疗法。我们终于有了一种治疗方法，可以消除人们在被诊断出患有癌症时对恐怖副作用毒性的恐惧。

此外，EDV 可以运载具有超细胞毒性的抗癌药物，有效靶向癌细胞，克服多重耐药性，并杀死癌细胞。此类具有超细胞毒性的抗癌药物因其毒性太大，一般无法全身给药。至今为止，没有任何其他疗法可以克服癌细胞产生的多种耐药机制，这就是为什么癌症不断复发，即

使是最好的疗法最终也会失败。同时EDV还能够激活多种抗肿瘤免疫细胞，增强人体抗癌的天然防御机制。

EDV另一个重要优势是价格实惠。许多新型癌症治疗方法(例如免疫疗法)可能非常昂贵，通常每位患者每年的费用超过二十万美金。EDV的制造成本相对较低，因此可以在全球范围内负担得起治疗费用。

此外，EDV在治疗已用尽所有其他治疗方案的终末期癌症患者方面显示出其特有潜力。临床试验表明，即使在其他疗法失败的情况下，EDV也可以提供治疗益处，这凸显了它们为晚期转移性和低生存率癌症患者带来新希望的潜力。

由韧性和探索定义的研究道路

然而，对于 MacDiarmid 博士、Brahmbhatt 博士及其 EnGeneIC 团队来说，EDV 技术的开发是一段漫长而艰辛的旅程。在过去的二十年里，他们面临着无数挑战，从资金短缺到将新技术推向市场的复杂性。

MacDiarmid 博士和 Brahmbhatt 博士对工作的奉献精神体现在他们的个人牺牲中。在困难时期，例如 2008 年的雷曼兄弟危机和 COVID-19 大流行期间，他们减薪甚至停薪，以确保研究团队能够继续工作。这种对团队的承诺和对使命的坚定信念使他们能够培养韧性并克服障碍，将 EDV 技术推进到临床试验阶段。

战略合作和市场潜力

EDV技术的潜力吸引了许多投资者和战略合作伙伴的极大兴趣。其中一项值得注意的合作是与新加坡高级医学研究所控股公司(SAM Holdings)的合作。这一合作伙伴关系有望显著推进亚洲的癌症治疗，并提供多项显著优势。

SAM 和 EnGeneIC 之间的协议授予了 EDV 癌症治疗药物在亚洲 17 个国家/地区的独家分销权。此外，双方将合作开发基于 EDV 的诊疗药物和成像剂。这一合作伙伴关系既可通过利润分享协议，双管齐下，扩大收入来源，也与 SAM Holdings 投资新一代技术(尤其是癌症治疗)的核心愿望相一致。

此次合作还旨在通过将尖端癌症治疗方法引入该地区来提升新加坡作为领先医疗旅游中心的地位。SAM Holdings 将支持 EnGeneIC 获得资金和监管批准，并在新加坡建立制造工厂、进行临床试验以及获得EDV产品的市场授权。

EnGeneIC 的潜在价值是惊人的。MacDiarmid 博士和 Brahmbhatt 博士拒绝了出售该公司的提议，因为他们认识到该公司真正的价值尚未实现。他们决定继续保留这项技术，这反映了他们对其技术潜力的信心以及他们对确保市场上成功的承诺。随着 EnGeneIC越来越接近获得监管批准和扩大运营规模，其估值可能会飙升，为投资者和利益相关者带来可观的回报。

与其他被收购数十亿美元的生物技术公司相比，EDV 技术的巨大潜力更加凸显。例如，辉瑞斥资 430 亿美元收购拥有标准 ADC 平台的 Seagen 公司，凸显了市场对创新癌症治疗的需求。同样，默克的免疫疗法 Keytruda 已被批准用于治疗超过16种不同的癌症，尽管具有毒副作用，但每年仍能产生 200 亿美元的收入。

EnGeneIC凭借其能够靶向多种癌症的无毒、多功能技术平台，可以轻松超越这些基准。该公司广泛的专利组合，包括 200多项已授权的重叠专利，涵盖其技术的多个方面，进一步加强了其估值。EnGeneIC 是该专利组合的唯一所有者，专利期限目前延长至 2042 年，预计将超过 2050 年，还有几个新的专利系列申请等待提交。这些专利，再加上 EnGeneIC 的机密技术，为潜在竞争对手设置了强大的复制壁垒，并为公司的长期成功奠定了基础。

EDV潜力的证实：临床试验结果和 FDA 授予快速通道资格

EDV技术在临床前期和临床试验中显示出巨大的发展前景。这些数据已发表在许多同行评审，高影响力的科学和临床期刊上。最重要的结果来自于治疗胰腺导管腺癌 (PDAC) 的临床试验。PDAC 是最具侵袭性和致命性的癌症之一。这些试验的积极结果促使了FDA 授予了 PDAC EDV疗法快速通道指定资格，肯定了该技术在解决低生存率癌症尚未满足的医疗需求方面的潜力。

EnGeneIC临床试验取得的早期成功为全球癌症患者带来了新的希望。例如，洛杉矶一名接受EDV治疗的女性能够在治疗期间前往巴黎度假一个月，这在传统癌症治疗中是不可想象的。这位女士在 EDV 治疗26个月后，病情处于完全缓解状态。另一名终末期皮瘤患者肺部的肿瘤几乎完全消除，这一结果史无前例，以至于肿瘤科医生难以置信地挥舞着扫描结果跑下医院走廊。在美国的一项小型临床试验中，一名腰部以下瘫痪的终末期胶质母细胞瘤患者在接受EDV 治疗后奇迹般地康复了。美国哥伦比亚广播公司(CBS)电视台报道了这一令人震惊的消息。

尽管取得了这些成功，但 EnGeneIC 在将其技术推向市场的过程中也面临着重大挑战。获得 FDA 批准的道路漫长而充满障碍，该公司仍在这一复杂的环境中继续努力。然而，EDV 技术显著改善癌症治疗的潜力是不可否认的，EnGeneIC 致力于让全世界的患者都能获得这种挽救生命的疗法。

EDV 技术的全球应用

随着 EnGeneIC 越来越接近将其 EDV 技术商业化，该公司面临着扩大运营以满足全球需求的挑战。其中一个关键问题是确保全球患者都能够负担得起此医疗费用并获得该癌症治疗技术，特别是在那些往往无法获得晚期癌症治疗的发展中国家。

EnGeneIC 的首要任务是使 EDV的 治疗成本显著低于目前市场上的其他免疫疗法。通过精心管理生产和开发成本，该公司旨在让广大患者能够接受 EDV 治疗。

鉴于全球癌症负担沉重，EDV 技术的潜在市场十分巨大。由于癌症有 200 多种，对有效且安全的治疗方法的需求是巨大。EDV 技术能够针对多种癌症，且毒性较低，因此该公司有望在全球癌症治疗市场中占据很大份额。

EnGeneIC 的技术对高净值人士 (HNWI) 和超高净值人士 (UHNWI) 也特别有吸引力，尤其是在亚洲。能够提供副作用最小的尖端癌症治疗，以及改善生活质量的承诺，可能会引起寻求最佳治疗的富裕患者和希望回馈社区的人们的共鸣。此外，该公司专注于在亚洲，包括香港、新加坡、马来西亚和印度尼西亚等国家/地区，扩



Photo: EnGeneIC

大其技术的使用范围， 这表明了EnGeneIC致力于产生全球影响的承诺和信心。

癌症领域的诊疗兼并方法

EnGeneIC 也在探索令人兴奋的诊断治疗学领域。该领域将诊断和治疗无缝地结合在一起。这个概念涉及使用 EDV 技术不仅可以诊断肿瘤，而且还可以同时提供靶向治疗。例如，通过将放射性同位素连接到 EDV，临床医生可以显示肿瘤进行成像，同时向癌细胞提供有效的治疗载荷。这种双重功能最大限度地提高了癌症治疗的效率，允许实时监测治疗效果并减少对多个程序的需求。

EnGeneIC 同时也在研究将硼整合到 EDV 中用于癌症治疗，特别是脑瘤和头颈部肿瘤。硼中子俘获疗法 (BNCT) 是一种很有前途的治疗方法，它涉及将硼输送到癌细胞，然后用中子束照射该区域以触发 α 粒子的释放，从而直接杀死癌细胞。BNCT 技术的最终挑战是找到一种有效的载体将硼输送到癌细胞中，防止其扩散至全身，并在癌细胞中积累足够的硼，使 BNCT 技术更加有效。EDV 技术已经证明了其有效加载硼的能力，目前正在进行将其输送到癌细胞的临床前期研究，这可能会为 EDV技术开辟尚未尝试的新途径。

探索 EnGeneIC 和 EDV 的未来前景

随着 EnGeneIC 不断改进EDV 技术并扩大其覆盖范围，未来将拥有令人兴奋的进一步创新和提高影响力的可能性。该公司持续的研发工作，加上致力于应对全球健康

挑战的决心，使其成为下一代癌症治疗领域的领导者之一。EDV技术能够高精度提供治疗剂、克服耐药性、刺激抗肿瘤免疫反应并提供负担得起的治疗选择，这凸显了其成为未来肿瘤治疗基石的潜力。

展望未来，EnGeneIC的未来愿景不仅包括提高EDV技术的有效性，还包括探索新应用并与其他新兴技术联合集成。通过专注于个性化医疗、肿瘤诊疗兼并方法及全球技术可及性，该公司旨在满足癌症患者的多样化需求并推动肿瘤学的进步。

对于高净值人士、超高净值人士和利益相关者来说，有机会支持并参与EnGeneIC的旅程，代表着他们有机会为癌症治疗的重大变革做出贡献。无论是在财务价值还是社会影响方面来看，都有可能获得可观的回报，这凸显了持续投资和支持EDV等创新技术的重要性。癌症治愈的未来是光明的，EDV技术将引领着癌症治疗个性化及有效治疗的新时代。

来自 MacDiarmid 博士和 Brahmhatt 博士的核心理念和专业建议

MacDiarmid 博士和 Brahmhatt 博士在他们的职业生涯中取得了非凡的里程碑，EnGeneIC 的成立和 EDV 技术的成功开发是他们最重要的专业成就。MacDiarmid 博士强调了他们的工作对患者生活的影响以及在临床试验中观察到的积极结果。Brahmhatt 博士强调了他们在充满挑战的时期（包括财务困难和全球危机）的韧性，展示了他们的承诺和毅力。

对于有志于在医学领域有所作为的年轻科学家和企业家，MacDiarmid 博士和 Brahmhatt 博士提供了宝贵的建议。MacDiarmid 博士倡导建立牢固的合作伙伴关系和保持弹性的重要性，鼓励人们寻找与他们有共同愿景的合作者，并在面对挑战时保持适应能力。同时，Brahmhatt 博士强调充分准备和灵活性的必要性，建议有抱负的企业家将逆境视为成长和创新的机会。

Brahmhatt 博士也分享了 EnGeneIC 的重要经验，“逆境是发明之母。人们必须学会坚韧不拔，在困难中坚持不懈”。EnGeneIC 的发展体现了这一观点。在 COVID-19 大流行期间，虽然 EnGeneIC 主要专注于癌症治疗，但该团队意识到传染病疫苗的重要性。这一洞察力促使他

们在一个月内开发出一种新型疫苗，这极大地证明了 EnGeneIC 能够迅速进入新领域并增加公司价值。

EDV-COVID 疫苗与现有疫苗相比具有几个独特的优势。它针对病毒的所有突变株提供有效保护，并能够携带来自不同病毒的多种抗原，从而减少对多种疫苗的需求。EDV 疫苗还提供持久的免疫保护，从而最大限度地减少了频繁加强注射的需要。与需要在极低温度下储存和运输的传统疫苗不同，EDV 疫苗可以在室温下储存和运输。此外，EDV-COVID 疫苗的保质期超过四年，较之于当前疫苗典型的六个月到一年的保质期。其明显更有优势。此外，EDV 疫苗不仅提供全身保护，还可通过鼻内给药提供局部保护，增强对呼吸道病毒的防御能力。

EnGeneIC 对 80 名健康志愿者进行的 EDV-COVID 疫苗 I 期和 IIa 期临床试验证实，该疫苗的功效与临床前期研究结果相匹配。这种疫苗为各种不针对突变菌株或新出现的流行病的通用疫苗提供了构想论证。这一经验表明，面对逆境可以有助于跳出思维定式，从而带来非凡的创新，并增强了公司对其技术潜力的信心。

EnGeneIC 对待员工的理念是相信每个人都是平等的，并且对团队的成功至关重要。他们强调团队合作和耐心的重要性，认识到公司的成就是集体长期努力和奉献的结果。

结束语

EDV 技术代表了抗癌斗争中的一项重要进步，为靶向治疗提供了一种新颖且高效的方法。EDV 技术具有精准靶向、降低毒性、唤醒抗癌免疫系统和广泛应用的潜力，能够大幅改善癌症治疗并提高全球数百万患者的生活质量。

随着 EnGeneIC 继续推进其使命，EDV 技术的潜力仍然充满希望，为未来能够以更高的精度、有效性和同情心治疗癌症，带来了希望。对于那些希望支持未来癌症治疗的前沿领域的人来说，EnGeneIC 代表了一个极具吸引力的机会，并可能对世界产生有意义的持久影响。

免责声明：本文中的医疗或健康信息代表 EnGeneIC 科学家和作者的个人观点。它不构成医疗或专业服务。如果您有任何特定的医疗保健需求，请务必咨询您的医生或合格的医疗保健提供者。

Translated by: EnGeneIC

Pierre-Emile Humbrecht The Heart of Biodynamic Winemaking at Domaine Zind-Humbrecht

by Toh Mu Qin

Tradition and sustainability in every bottle of wine.

Nestled in the heart of Alsace, Domaine Zind-Humbrecht embodies the harmony of tradition and sustainability. Under the leadership of Pierre-Emile Humbrecht, this esteemed winery has not only preserved its rich heritage but also championed biodynamic farming practices, ensuring that each bottle of wine is a true reflection of its terroir and upholds ecological responsibility.

A Legacy Rooted in Passion

The story of Domaine Zind-Humbrecht began in 1959 with the marriage of Genevieve Zind from Wintzenheim and Leonard Humbrecht from Guebenschwhir. Their union marked the birth of a small winery, which has since grown to encompass nearly 40 hectares of vineyards across eight villages. Pierre-Emile Humbrecht recalls his childhood as a blend of normalcy and subtle indoctrination into the world of winemaking. It wasn't until his teenage years that he began working in the vineyards, gradually taking on more complex tasks.

“My childhood was normal, like every kid. I wasn't in the Domaine business to work until I was 15-16 years old. At the beginning, it was simple jobs, and further on, more interesting and more complicated,” says Pierre-Emile.

His formative years were marked by a comprehensive education in agronomy and oenology, with stints at prestigious wineries such as Domaine de la Romanée-Conti and Marie-Thérèse Chappaz in the Swiss Valais. In 2019, he returned to Domaine Zind-Humbrecht, ready to carry forward the legacy initiated by his grandparents and meticulously nurtured by his father, Olivier Humbrecht.





Commitment to Sustainability

Sustainability is not merely a practice at Domaine Zind-Humbrecht; it is a philosophy deeply embedded in its history. Leonard Humbrecht's initial vision was to secure the most desirable vineyards in Alsace, a goal that involved painstakingly working on steep hills with no tractors or specialised machinery. This commitment to quality laid the groundwork for future generations to build upon.

Olivier Humbrecht, a pivotal figure in the estate's history, transitioned the winery to organic farming in the late 1990s and swiftly moved to biodynamic practices. "The objective was to make the purest and more mineral wine," explains Pierre-Emile. This transition was driven by a desire to enhance the natural expression of the vineyards, producing wines that authentically reflect their unique terroir.

Biodynamic Practices

What sets Domaine Zind-Humbrecht apart is its rigorous adherence to biodynamic principles. "Our winery is very different in many ways," notes Pierre-Emile. "We don't use any phytosanitary products with synthetic molecules, only copper and sulphur, and herbal tea for spraying against mildew and powdery mildew." The vineyards are densely planted, with an average of 8,000 vines per hectare, compared to the regional average of 5,500. This high density promotes competition among vines, resulting in lower yields but higher quality grapes.

Manual labour is a key aspect of their approach, from pruning to harvesting. In the cellar, minimal intervention is the norm. Wines are aged on lees in large old oak foudres, some as big as 10,000 litres, for 18 months. This method ensures the wines develop complexity and depth while maintaining their natural purity.

Challenges and Innovations

Implementing sustainable practices is not without its challenges. Climate change poses a significant threat, with unpredictable weather patterns affecting each vintage. "The most difficult challenge in winemaking is the global climate change," Pierre-Emile admits. Yet, the estate remains resilient, employing technologies and innovative practices to adapt. From using horses to plough the vineyards to planting diverse crops and trees, every effort is made to enhance biodiversity and mitigate environmental impact.

Pierre-Emile elaborates on the tangible benefits of these practices, "We have vineyards with more biodiversity, and this is very important for all living species, including the vines, and therefore the grapes harvested. The main result we hope for is more pure wines, minerality, and wines reflecting the terroir. The winegrower can't change the climate alone, we can't change the soil or the geology of the terroir, but we can change our practices to help nature, and work among it."

A Community Effort

Sustainability at Domaine Zind-Humbrecht extends beyond the vineyards. The well-being of the team, which numbers around 20, is a top priority. "We try to find the right balance between petrol functioning machines and manual work," says Pierre-Emile. Horses, for example, are used selectively to reduce soil compaction and minimise the estate's carbon footprint. This balance is crucial in ensuring the longevity of both the land and those who work it.

Engaging the community and the team in these efforts is important. "I must say that all the staff working so hard at the winery is happy to work as we do. They are glad we don't use any chemicals," Pierre-Emile shares. Regular tastings and educational sessions ensure that everyone understands and appreciates the significance of their work. By involving the team in the decision-making process and educating them about the benefits of sustainable practices, Pierre-Emile fosters a sense of ownership and pride among his employees.

Looking Ahead

As Pierre-Emile looks to the future, his goals for Domaine Zind-Humbrecht remain clear – to continue producing exceptional wines that honour their heritage and to further refine their sustainable practices. "For our estate, my grandparents started to make their own wine, my father also made his wine, now it is me. In the future, maybe the next generation, and I will help as much as I can," he says. This forward-thinking approach is not just about preserving the past but also about innovating for the future. 🌱



From Canvas to Curator

The Maestro Behind Tang Contemporary Art

by Toh Mu Qin



In the vibrant world of contemporary art, Zheng Lin stands out as an influential figure. As the founder of Tang Contemporary Art, his name has become synonymous with creativity and distinction. Zheng Lin's unique blend of artistic passion and business savvy has transformed the gallery landscape across Asia and beyond. From his early days as a Fine Arts student to his current status as a prominent personality in the art world, Zheng Lin's career exemplifies determination, adaptability, and a steadfast dedication to his craft.

A Passion Ignited

Zheng Lin's foray into the art world began with his studies at the Fine Arts Department of Hunan Normal University. As an artist himself, he cultivated a deep appreciation for the creative process and the challenges faced by artists. This foundation laid the groundwork for his future endeavours. In the 1990s, Zheng Lin found himself amidst a network of like-minded friends and artists, providing a supportive ecosystem for his burgeoning aspirations.

However, it was a trip to Bangkok in 1997 that catalysed his entry into the gallery business. Originally intending to pursue business management projects, Zheng Lin's plans were abruptly thwarted by the Asian financial crisis. Seeking stability, he pivoted towards opening an art gallery in Bangkok, thus establishing the first space for Tang Contemporary Art. This decision, born out of adversity, marked the beginning of an impactful journey.



A Unique Vision

Unlike many galleries in Asia during that era, which primarily focused on selling paintings, Zheng Lin envisioned something grander. He sought to create a high-end contemporary art platform, akin to luxury brands like Chanel and Louis Vuitton. Tang Contemporary Art was designed to be more than just a commercial space; it was a professional platform dedicated to promoting and managing artists, organising exhibitions, and advancing contemporary art.

Under Zheng Lin's leadership, Tang Contemporary Art has consistently supported duo exhibitions and museum projects. The gallery has hosted numerous remarkable exhibitions, realising projects that many deemed difficult to achieve. This dedication to fostering artistic collaboration and pushing creative boundaries has distinguished Tang Contemporary Art apart from its peers.

Navigating a Changing Market

Since its inception, Tang Contemporary Art has witnessed and adapted to significant changes in the Asian art market. In the late 1990s, Thailand, untouched by war for two centuries, boasted a wealthy and established class, providing fertile ground for Zheng Lin's gallery. At that time, the Chinese contemporary art market was still nascent, making Bangkok an advantageous location for introducing Chinese artists to Southeast Asia.

The gallery's sales figures reflected its success. From 2000 to 2006, annual sales soared from RMB 2-3 million to RMB 7-10 million, with each exhibition averaging impressive sales figures. This period marked a rapid expansion phase for Tang Contemporary Art, culminating in the gallery's relocation to Beijing in 2006. The timing was impeccable, as the Chinese contemporary art market began to boom, further propelling the gallery's growth.

Tang Contemporary Art's growth and expansion have been driven by strategic collaborations with top artists from China, Southeast Asia, and Europe. Renowned artists like Ai Weiwei, Huang Yongping, Yue Minjun, and Chen Danqing have been associated with the gallery, attracting high-quality collectors from around the world. These collaborations, coupled with exceptional exhibitions, have drawn collectors such as the DSL Art Foundation in France and a princess from Qatar.

Zheng Lin believes that fostering strong relationships with artists and hosting quality exhibitions are fundamental to attracting and retaining high-net-worth collectors. By continuously evolving and offering outstanding service, Tang Contemporary Art has sustained its influence and appeal.

Overcoming Challenges

The journey has not been without challenges. For Zheng Lin, the greatest professional challenge lies in establishing and nurturing relationships with artists. The positioning, standards, and branding of a gallery are crucial, as they form the foundation of its institutional voice. In the competitive gallery industry, standing still equates to falling behind. Continuous progress is essential to attract talented artists and high-quality collectors.

Despite these challenges, Zheng Lin's relentless pursuit of excellence has enabled Tang Contemporary Art to achieve stable growth and ongoing advancement. The gallery's influence in China and Asia is firmly established, and Zheng Lin's sights are now set on global expansion.

Proudest Moments and Future Plans

Reflecting on Tang Contemporary Art's journey, Zheng Lin is immensely proud of the gallery's resilience and growth, particularly during the Covid-19 pandemic. While many businesses and institutions struggled, Tang Contemporary Art not only survived but thrived, expanding its exhibitions and influence. This resilience, cultivated through overcoming financial crises and other adversities, speaks volumes about Zheng Lin's leadership.

Looking ahead, Zheng Lin has ambitious plans for Tang Contemporary Art. With a solid footing in the Asian market, the gallery aims to expand into Europe and America. Plans are underway to open new spaces in Los Angeles, London, and Paris within the next two to three years, building a larger operational and management platform.

Zheng Lin's journey from an artist to a respected gallerist is a story of vision, resilience, and unwavering passion. Through Tang Contemporary Art, he has reshaped the gallery landscape, championed contemporary art, and established a platform that supports and promotes artists globally. As Zheng Lin looks to the future, his commitment to pushing boundaries ensures that Tang Contemporary Art will continue to make waves in the global art scene. 🌱



Photo: Alexander Calder

Sculptures in Motion

by Dionne Bel

The BMW Art Car Collection, a unique confluence of automotive engineering and fine art producing some of the fastest moving sculptures the world has ever seen, began as an inspired experiment and has grown into a celebrated tradition that continues to evolve a half-century later.

It all started with one man: Hervé Poulain. A French motor racing driver, auctioneer and art enthusiast, he visualised a project whereby a race car, a symbol of modern engineering, would be used as a canvas for contemporary art. He took his crazy idea to Jochen Neerpasch, director of the BMW motorsport division at the time, who gave him the green light. Poulain's vision took shape when he convinced American artist Alexander Calder, who revolutionised sculpture with his kinetic "mobiles", to paint a BMW 3.0 CSL. Calder's vibrant hues and bold, dynamic forms wrapped around the sleek lines of the car, creating a striking fusion of art and automobile. The world's first BMW Art Car was born.

Poulain explains his choice of Calder: "Because he invented the sculpture in motion. Besides, this was supposed to be a gift to the spectators of the 24 Hours of Le Mans [a legendary endurance race in northwestern France], who mainly tend to be not necessarily familiar with contemporary art. And this American artist's oeuvre is instantly comprehensible, with its surfaces of pure primary colours – blue, red, yellow – that

seem like something out of a children's painting book. His work has an immediate effect on us, with no need for any particular artistic background knowledge." The car debuted in 1975 at the 24 Hours of Le Mans with Poulain and two other drivers behind the wheel, not only captivating the motorsport, art and design communities, but also setting a precedent for future collaborations. Today, other car brands have followed suit, but back then it was a truly game-changing feat.

"I saved my Art Car concept for the world's greatest long-distance race," Poulain recalls. "For me, the 24 Hours of Le Mans is comparable to the Olympics. And because I was aiming for the greatest possible effect, I didn't want to enter as a private individual, but as a team driver with the infrastructure of a big company. The idea had a unique communicative value because, regardless of the outcome and the uncertainties of the race, it was relevant to all media – the sports reporters, the feuilleton and the general press at large. The performance was the cherry on top of the sundae."



Photo: Tereza Mundilová © BMW AG

Following Calder's pioneering work, a succession of distinguished artists have contributed to the collection, each bringing their unique vision to a BMW car. In 1976, Frank Stella applied his black-and-white grid based on oversized graph paper and geometric patterns to another BMW 3.0 CSL. The next year, Roy Lichtenstein's comic strip-inspired design, composed of his signature Ben Day dots of the road, rising and setting sun and passing scenery through which the car is being driven, adorned a BMW 320i, capturing the movement and energy of racing. Perhaps the most iconic of the early Art Cars is the BMW M1 by Andy Warhol, who was the first to paint the bodywork himself using brushes and even his own fingers. "I attempted to show speed as a visual image," he said. "When an automobile is really travelling fast, all the lines and colours are transformed into a blur."

As the years passed, the BMW Art Car Collection continued to evolve, reflecting changes in the art world and advancements in automotive technology. The 1980s and 1990s saw contributions from artists like Robert Rauschenberg, who incorporated photographic transfers of classical artworks into his design, and David Hockney, who erased the outer surfaces of a BMW 850 CSi and allowed the inside of the car to be made visible. As the project took on a more global dimension, artists from diverse cultural backgrounds were invited to contribute, bringing fresh perspectives and styles. For the first BMW Art Car to be designed by a woman, South Africa's Esther Mahlangu metamorphosed a BMW 525i through tribal patterns traditionally used by the Ndebele people for decorating their homes, mixing cultural heritage with contemporary design. In 2010, Jeff Koons added hundreds of dynamic lines to a BMW M3 GT2, creating a colourful explosion that echoed the car's high-speed performance.

"The BMW Art Car project was not conceived at the drawing board with PR and marketing colleagues elaborating on the best way to introduce the BMW brand into the arts," states Dr. Thomas Girst, head of BMW Group Cultural Engagement. "We have been active in the arts with hundreds of engagements around the world for more than 50 years now, and most of what we do in culture doesn't directly involve our cars. Artists working for us don't need to endorse our brand or become a BMW ambassador. I always tell them

to keep their criticality intact – and we never interfere in the creative process. Having said that, we are very much aware of the BMW Art Cars receiving a lot of attention and creating a positive image, visibility and reputation for our company. Our cultural engagements and long-term partnerships are what set us apart from the competition and other luxury brands. Our passion for arts and culture is not proclaimed, but heartfelt!"

The BMW Art Car programme is not static; it continues to grow and adapt. Recent additions reflect current dialogues in contemporary art and design. For example, the 2017 contribution by Chinese artist Cao Fei employed augmented reality to create a futuristic vision whereby a storm of colours swirled above a carbon black BMW M6 GT3 race car. Blending digital and physical realms in a commentary on technology's role in modern life and mobility, the result was a BMW Art Car for the 21st century. The most recent iteration was designed by Ethiopian-American artist, Julie Mehretu, who introduced her unique process of additive and subtractive mark-making to a BMW M Hybrid V8, which returned to race at the 24 Hours of Le Mans after a 14-year hiatus. She says she imagined her painting *Everywhen* "inhaled and digested by the car, which then transforms the car. When I was in the studio with a one-fifth scale model of the car in front of the painting, I kept thinking about how it could drip into the car somehow. Then it became interesting to think of the painting as a portal that the vehicle would move through."

Today, the 20 automobiles in the BMW Art Car Collection stand as a testament to the enduring relationship between art and technology. They are exhibited in museums and galleries worldwide, allowing a broad audience to appreciate the innovative fusion of these fields. The ongoing project is a reminder of the endless possibilities when creative minds intersect with cutting-edge engineering, bridging the gap between two seemingly disparate worlds to gather together some of the most illustrious artists of each era to transform BMW vehicles into mobile masterpieces. 🏎️



About The Writer

Dionne Bel is a freelance journalist and editorial consultant who has lived on three different continents. Dionne loves to meet with inspirational individuals in pursuit of excellence to tell their stories: emerging and established artists, designers and craftsmen, engaging entrepreneurs and philanthropists, and the movers and shakers of the world today. She contributes regularly to regional and international titles such as *Artsy*, *Design Anthology*, *Forbes*, *Robb Report*, *Shawati* and *Tatler*, shining a spotlight in particular on art, architecture, design, horology and jewellery.

Lotus Eletre

A Leap into the Electric Future

by Toh Mu Qin



Photos: Lotus Cars Singapore

Lotus Eletre marks Lotus' bold entrance into the all-electric hyper-SUV market. This state-of-the-art vehicle combines innovative engineering, exceptional performance, and luxurious design, all while maintaining Lotus' heritage of technical excellence and lightweight construction.

Lightweight Composite Structure and Advanced Joining Technologies

Lotus Eletre features a lightweight composite rear floor, demonstrating Lotus' commitment to advanced materials and engineering. This vehicle employs 16 different advanced joining technologies, including structural adhesives, self-piercing rivets, flow-drilled screws, spot welding, and laser welding. These methods contribute to a light, stiff body structure that enhances dynamic capability, comfort, and refinement, whether on road, track, or off-road. Lotus Eletre is also engineered to meet or exceed the world's most stringent safety regulations while maintaining top performance.

Dual-Motor All-Electric Powertrain – Power, Performance, and Efficiency

Lotus Eletre's dual-motor all-electric powertrain delivers the searing performance expected of a hyper-SUV, coupled

with energy efficiency for long-range and everyday usability. Beneath the vehicle floor lies an 800-volt, 112 kWh Lithium-ion battery pack. This architecture reduces the operating current by half compared to conventional 400-volt systems, resulting in less weight, enhanced power efficiency, and faster charging.

The innovative configuration of the battery pack, with prismatic cells arranged directly within the structural casing, enhances energy density and reduces weight. This results in a WLTP Combined range of up to 600 km (373 miles) for the Eletre S and 490 km (304 miles) for the Eletre R. The thermal management system and battery control module ensure optimal operating conditions, contributing to the vehicle's impressive range and durability.

Advanced Electric Drive Units and Regenerative Braking

Integrating compact electric motors into the front and rear axles, Lotus Eletre becomes the first all-wheel-drive Lotus road car. The permanent magnet, synchronous motors, housed together with the transmissions and inverters, deliver exceptional packaging efficiency. The Eletre S features a

single-speed transmission on the front and rear axles, while the Eletre R includes a two-speed rear axle for superior launch performance and high-speed efficiency.

With 603 hp and 710 Nm of torque, the Eletre S accelerates from 0-100 km/h (0-62 mph) in 4.5 seconds, achieving a top speed of 258 km/h (160 mph). The Eletre R, with 905 hp and 985 Nm of torque, sprints from 0-100 km/h in just 2.95 seconds, reaching a top speed of 265 km/h (165 mph). Both models feature advanced regenerative braking, enhancing real-world range by converting kinetic energy back into electrical energy during deceleration.

Fast, Convenient Charging

Lotus Eletre's charging capabilities match its performance and range. A 22 kW on-board AC charger allows full battery replenishment from 0-100% in less than six hours with a 22 kW wallbox. The Lotus smartphone app provides full control over charging and pre-



conditioning, enhancing efficiency and occupant comfort. Utilising public charging stations, Lotus Eletre supports rapid 350 kW DC charging, recharging from 10-80% in just 20 minutes and adding over 120 km (74 miles) of range in five minutes.

Active Aerodynamics and Innovative Design

Lotus Eletre's cab-forward design evolves Lotus' iconic sports car aesthetics into a hyper-SUV form. The 'carved by air' design ethos integrates active aerodynamic technologies, including an active front grille with petals that open and close to optimise airflow.

The interior of Lotus Eletre is luxurious and spacious, featuring a digital cockpit with cutting-edge technology. Lotus Hyper OS, powered by dual Qualcomm 8155 Snapdragon chips, provides a seamless interactive experience with 3D animations and 5G connectivity. A 15.1-inch HD OLED touchscreen, wireless device charger, and multiple HD displays for passengers ensure an immersive and connected environment.

Advanced Driver Assistance Systems – Safety and Future-Proofing

Lotus Eletre comes equipped with a comprehensive suite of advanced driver assistance systems (ADAS). A total of 34 sensors, including LIDAR, radar, cameras, and ultrasonic sensors, provide a 360° view of the vehicle's surroundings. Two NVIDIA Orin-X chips offer 500 trillion operations per second, enabling features like Highway Assist and Driver Monitoring System (DMS). The Life Detection and Care system ensures the safety of children or pets left inside the vehicle, making Lotus Eletre one of the safest SUVs on the road.

Exterior Design – Daring and Dramatic

Lotus Eletre's exterior design embodies 75 years of Lotus sports car DNA. With a cab-forward stance, long wheelbase, and short overhangs, it creates the impression of a high-riding sports car. The aerodynamic principle of porosity, seen in the Evija hypercar, is integral to the design, reducing drag and enhancing performance. The aggressive rake of the windscreen, muscular haunches, and floating D-pillar with an 'air blade' aid in aerodynamic efficiency.

Interior Design – Luxurious and Sustainable

Lotus Eletre's interior sets new standards for Lotus, combining performance-oriented design with luxury and sustainability. Materials like Re-Fibre, Ultrafabric polyurethane seats, Alcantara, and Econyl carpets reflect Lotus' commitment to sustainable luxury. The driver-focused cockpit, spacious cabin, and practical storage solutions ensure an exceptional customer experience.

A Historic Shift for Lotus

As the final combustion engine Lotus sports car, the Emira, passes the baton to the Eletre, this all-electric hyper-SUV signifies a new era for Lotus. Combining technical innovation, advanced aerodynamics, and lightweight construction, Lotus Eletre sets a new benchmark for performance, versatility, and usability, appealing to driving enthusiasts worldwide. 🏞️

From Outer Space to Thin Air

by Urvashi Raizada

The Coperni Air Swipe Bag is a landmark innovation that is bringing science and fashion together like never before.



Making its debut at Paris Fashion Week earlier this year, the Air Swipe bag created waves by pushing the boundaries of both design and sustainability.

“The Air Swipe Bag is a manifestation of our vision for the future of fashion, where sustainability and design innovation go hand in hand.”

- Arnaud Vaillant

The world of luxury fashion is constantly evolving, with designers continuously pushing the boundaries of creativity and innovation. And one of the most compelling brands leading this charge is Parisian luxury accessories label Coperni. Renowned for its avant-garde approach, Coperni has grabbed media attention on several occasions by presenting novel integrations of fashion and technology. Earlier this year, the innovative brand pushed the envelope once again with the launch of its expectation-defying Air Swipe Bag.

Made from NASA-produced silica aerogel, which has been dubbed as the “lightest solid [material] on planet Earth,” the bag is remarkably made of 99 percent air, but remains durable and is easily recyclable to boot. Bringing together style and science like never before, the Coperni Air Swipe offers the possibility of a sustainable fashion future that could be defined by ingenious materials that are quite literally out of this world.

Science Fiction Meets Fashion

First made public in a runway show during the Paris Fashion Week in 2024, the Coperni Air Swipe bag challenges the idea of science in relation to fashion. Overall, the design of the bag is a continuation of the brand’s “swipe to unlock” icon-inspired leather bag which features a compact and structured design that is perfect for carrying essentials. However it is the material and composition of the Air Swipe that makes it so unique.

Made of 99 percent air and 1 percent glass, the bag weighs a mere 33 grams. Its lightweight construction was made possible through the use of silica aerogel – a lightweight, durable, and nearly transparent material used by NASA for space exploration. The space agency used this material in its stardust mission, the first spacecraft to bring samples from a comet to Earth in 1999, owing to its ability to withstand extreme heat of up to 1,200 degrees celsius and a pressure of 4000 times its weight.

Aerogels are considered porous, low-density, and solid to the touch – features that Coperni manipulated to create the aesthetic, cloud-like translucent appearance of the bag. The brand developed this innovative accessory by working alongside Ioannis Michaloudis, a visual artist and researcher of silica aerogel at the American University of Cyprus.



Coperni's 2021 futuristic fashion display was made using Fabrican, a patented spray-on material from a can that hardens into wearable textile.

A Labour of Love and Engineering

The Coperni Air Swipe Bag is more than just a fashion statement – it's a marvel of engineering. Creating silica aerogel involves significant time, expense, and effort. And more so to achieve the clarity seen in the Coperni Air Swipe Bag. Transforming this material into a wearable accessory also involves complex chemical processes, beginning with the careful mixing of chemicals such as sodium silicate, followed by an intensive procedure of ageing, drying, and molding.

While silica aerogel may require expensive and complex chemical processes to produce, it is remarkably easy on the environment as it is made of mostly organic substances and easily recycled. Its porous properties also make it an excellent choice for lightweight, aesthetic and thermally regulated textiles. When combined, these features make for a strikingly efficient material in terms of practicality and waste management.

While the Coperni Air Swipe Bag was constructed primarily as a concept bag, the brand's novel use of silica aerogel represents a significant step forward for the fashion industry. By considering such a novel material, Coperni has opened the floodgates to new sustainable luxury materials that are characterised by versatility, low environmental impact, and recyclability.

A History of Innovation

Founded in 2013 by Sébastien Meyer and Arnaud Vaillant, both graduates of the prestigious Institut Français de la Mode, Coperni has swiftly risen to prominence in the fashion world. Taking its name from Renaissance astronomer Nicolaus Copernicus, the brand reflects its founders' commitment to innovation and challenging the status quo.

In 2021, for example, the Coperni collection finale featured model Bella Hadid in a 3D spray-on dress that was created live using a sprayable liquid fiber called Fabrican. The display captured the world's attention with its unique application of technology to fashion design, generating a staggering \$26.3 million in media impact value within 48 hours of the show.

Coperni's aesthetic is characterised by sleek lines, minimalist forms, and an almost futuristic sensibility, often incorporating elements of technology in unexpected ways. This marriage of fashion and tech has become a hallmark of the brand, culminating in groundbreaking pieces like the Air Swipe Bag.

An Ethos for the Future

The development of the Coperni Air Swipe Bag was driven by Meyer and Vaillant's desire to push the boundaries of fashion through innovation. In interviews, the designers have spoken about their fascination with the intersection of science, technology and fashion. Their creations aim to reflect this synergy as well as their ambitions of influencing and inspiring new perspectives.

"We wanted to create something that was not only beautiful but also groundbreaking in its use of materials," says Vaillant. "The Air Swipe Bag is a manifestation of our vision for the future of fashion, where sustainability and design innovation go hand in hand." 🌱



About The Writer

Singapore-based writer and editor Urvashi Raizada enjoys delving deep into stories that matter, and delivering the whole scoop. She's spent the last 11 years writing about everything from tech and business to luxury and lifestyle, but the stories she loves the most are the ones that make the world a better place.

The Bvlgari

Aeterna High Jewellery Watches 2024 Collection

by Priyanka Elhence

Bvlgari unveils the dazzling Aeterna High Jewellery collection, an ode to its unique heritage and Rome's gems and coloured stones.

Bvlgari's unparalleled creativity and craftsmanship are unveiled in the Aeterna High Jewellery collection, a showcase inspired by the magnificent gems from Rome and the Roman Maison's rich cultural heritage.

Bvlgari celebrates its 140th anniversary with *Fuochi D'Artificio*, a collection of stunning timepieces reflecting a starry Italian summer night lit up by vivid fireworks. Radiant motives vibrating with a burst of colours, a result of the bold and daring combination of precious and colour gemstones matched with different metals, ranging from pink and white gold to titanium and platinum. Each piece of watch art is equipped with the Piccolissimo mechanical micro round movement, the smallest round mechanical movement on the market.

The opulent *Fuochi D'Artificio* High-Jewelry Manchette boasts an explosion of bright fireworks in the sky with moving elements, featuring a semi rigid cuff in rose gold and blue titanium, contrasting with dark onyx. A sweeping variety of colourful gemstones complete the creation with sparkling diamonds and hand-cut, polished onyx inserts.



Photos: Bvlgari®



From a central round-cut ruby, a burst of pear-shaped coloured gemstones and round-cut diamonds radiate in the *Fuochi D'Artificio* High-Jewelry Petite Watch, a secret watch with a semi-flexible cuff. Here, Bvlgari combines precious gems with inserts of aventurine, a translucent glass with sparkling inclusions of copper invented in 15th century Venice.

As a tribute to its Greek and Roman history and cultural roots, Bvlgari celebrates iconic mythological animals in its *Animali Fantastici* collection. The ancient Greeks and Egyptians revered the mythical Phoenix, a symbol of renewal, power and immortality. With its ability to continuously be reborn and transform itself, much like Bvlgari itself, the phoenix is Bvlgari Watch Division's creative director Fabrizio Buonamassa Stiglian's choice for the icon of eternity. The mythological animal inspires the *Fenice High-Jewelry* Watch, flanking an exceptionally rare central 9.78-carat Paraiba tourmaline hiding the watch dial. The masterpiece also features over 160 carats of strikingly beautiful gemstones, including blue, pink and purple sapphires, amethysts, rubies, pink garnets, tanzanites, iolites, aquamarines and diamonds for an incredible dégradé effect in the watch's colour palette.

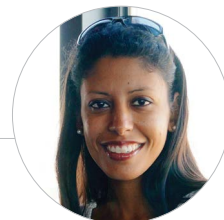
The Phoenix with its prominent extended wings is also the protagonist of the unisex *Fenice Octo Roma Secret* Watch, adorned with brilliant-cut blue, purple and pink sapphires, as well as aquamarines, rubies, and amethysts. White and pink gold spikes enrich the stunning creation, hiding an ultra-thin manual winding mechanical movement with flying tourbillon, complemented by a blue alligator strap.

Bvlgari's most famous heritage design, the serpent, is an emblematic motif in ancient Roman culture, representing



fertility, rebirth, metamorphosis and protection against evil spirits. *Serpenti Misteriosi Chimera* combines the body parts of two emblematic animals in the history of Bvlgari and Rome: the signature snake and the iconic lion, symbols of rebirth and eternity for the former, and of courage and determination for the latter. A sinuous white gold snake with diamond and emerald scales wraps around the wrist boasting both the animal heads, inspired by a Bvlgari archival piece from the 50s, with the head of the snake hiding the Piccolissimo.

And finally, in the year of the Dragon, the snake transforms into the grand mythical creature, the main figure of the *Serpenti Misteriosi Dragone*. This new interpretation of the snake & dragon-shaped watch is a nod to the historic one created for Elizabeth Taylor in 1962 as Cleopatra. Just like that heritage piece, a tubolari bracelet embodies the snake, with its head set with a wave of 32 carats baguette cut diamonds. 🐉



About The Writer

Bred in The Seychelles and Kenya, Priyanka Elhence studied Hotel Management in Switzerland, coupled with working as a Recruiter in Palm Beach, before doing an MBA in Human Resources Management in London. Calling Singapore home for the past 20 years, Priyanka has been a Freelance Writer now for the past 8 years, writing about everything from luxury and dining, travel and lifestyle, to parenting and finance.



Tiffany Blue Box® with Tiffany Soleste® Round engagement ring in platinum with diamonds

Photo: Tiffany & Co.

Beyond the Blue

by Julia Goh

From ethical sourcing to green packaging, Tiffany & Co. is leading the charge in sustainable luxury. Learn how the jeweller has been setting new standards in the industry and transforming its practices to protect our planet.

In recent years, the luxury industry has faced increasing scrutiny over its environmental impact. As consumers become more eco-conscious, they demand greater transparency and responsibility from the brands they support. Luxury jeweller Tiffany & Co. has responded by implementing comprehensive sustainability practices that have set new benchmarks in the industry.

The company's 2025 Sustainability Goals, a bold roadmap outlining its commitments for the future, reinforces its ongoing sustainability efforts. Developed in alignment with the United Nations' Sustainable Development Goals, this roadmap cuts across the pillars of product, people and planet, and includes initiatives to increase the use of sustainable materials, enhance traceability, expand renewable energy usage and boost community investments.

"As one of the oldest jewellery companies, it is our responsibility to take the lead at the vanguard of sustainable luxury. Sustainability is both our heritage and our future. We have improved and advanced our sustainability efforts for decades, infusing it throughout our design philosophy," said president and chief executive officer, Anthony Ledru.

Transparency and ethical sourcing

A cornerstone of Tiffany's sustainability efforts is its commitment to ethical sourcing. The jeweller has established stringent standards to ensure that the materials used in its creations are responsibly sourced, including precious metals and gemstones.

A prime example is its Diamond Source Initiative. Launched in 2019, this programme provides provenance information – region or countries of origin – for every newly sourced, individually registered diamond it sets. The following year, the Diamond Craft Journey was introduced, which reveals to its clients the countries where these stones are crafted. This transparency assures customers of the integrity of their purchases and promotes responsible mining practices.

Prioritising the use of recycled precious metals is another significant effort. The jeweller is moving toward sourcing all its gold, silver and platinum from recycled sources. By repurposing existing materials, it reduces the demand for newly mined metals, lessening the environmental impact of its production processes.

While the iconic Blue Box remains an enduring symbol of Tiffany, its evolution reflects the brand's commitment to sustainability. Introduced in 1886, the box is now made with paper from Forest Stewardship Council-certified sources, ensuring that the materials come from responsibly managed forests. This change aligns with efforts to minimise packaging waste and promote recycling.

Reducing carbon footprint

Recognising the importance of addressing climate change, Tiffany has taken significant steps to reduce its carbon footprint. The company has committed to fully using renewable electricity in all its global operations, decreasing

greenhouse gas emissions and supporting sustainable energy infrastructure.

In 2022, the jeweller pledged to achieve net-zero greenhouse gas emissions across its operations and supply chain by 2040 – ten years earlier than the Paris Climate Agreement target. The pledge aligned with the Science Based Targets initiative's (SBTi) Net-Zero Standard, the leading global institution for corporate emissions reductions.

People matters

A key pillar in the 2025 Sustainability Goals is the well-being and development of its people, including employees, clients, suppliers and communities. The jeweller is committed to ensuring diversity in the workplace, fair labour practices, professional growth of its workforce, and optimal working conditions for all employees and artisans involved in the creation of its jewellery.

A notable initiative is the Tiffany & Co. Supplier Code of Conduct, which outlines expectations regarding labour practices, health and safety, as well as environmental stewardship. In implementing this code of conduct, the jeweller's suppliers are regularly audited to ensure compliance with these standards, fostering a culture of accountability and continuous improvement.

Community engagement

Beyond its internal efforts, Tiffany engages with communities and organisations to promote broader sustainability goals. The company collaborates with non-profit organisations,

industry groups and other stakeholders to advocate responsible mining, ocean conservation and biodiversity protection. One notable partnership is with the Responsible Jewellery Council (RJC), an organisation that sets standards for responsible business practices in the jewellery supply chain. As a certified member of the RJC, the jeweller is guided by rigorous ethical, social and environmental standards.

The company also supports the work of the Tiffany & Co. Foundation, which focuses on preserving the world's most treasured landscapes and seascapes. Since its inception in 2000, the foundation has awarded over US\$85 million in grants to non-profit organisations dedicated to environmental conservation. One of these is the Blue Nature Alliance, an ocean conservation initiative by Conservation International, which seeks to double the world's marine protected areas by 2025.

It has also collaborated with the Wildlife Conservation Society on its Reefs for the Future, a programme that takes a holistic approach to coral conservation. The programme assists fisheries in strengthening their management strategies, so that local communities can benefit from sustainable access to food and livelihoods without damage to coral reef ecosystems.

Thus far, the foundation has helped to create and expand almost 11 million km² of marine protected areas across the world's oceans, and has also helped to protect 10 million acres of ecologically and culturally significant land in the United States.

Committed to continuing its journey towards greater sustainability, Tiffany & Co. has set ambitious goals for the future, including further reducing its carbon emissions, increasing the use of green materials, and expanding its community engagement. Its efforts not only contribute to a more sustainable world, but also demonstrate that luxury and sustainability can go hand in hand, setting a powerful example for the industry and beyond. 🌱



Tiffany & Co. Schlumberger® Coco Bean brooch in 18k yellow gold and platinum with tsavorites and diamonds.

Photo: Tiffany & Co.

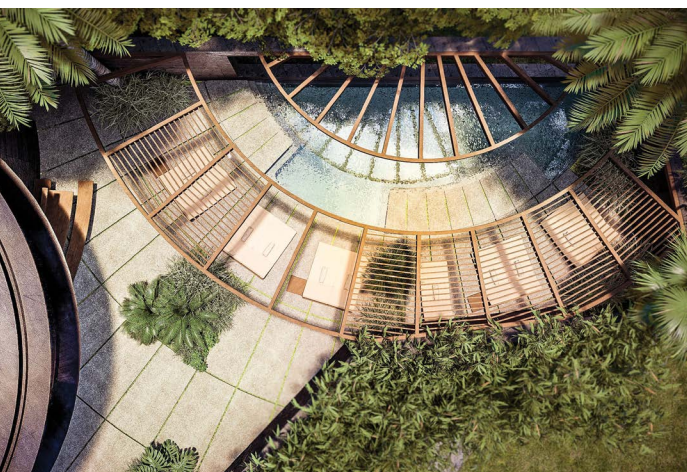


About The Writer

Julia Goh is a Singapore-based editorial specialist with over 20 years of experience in content creation. She was the managing editor of a few publications. Her passion for storytelling spans subjects from travel, scuba diving to the luxury lifestyle. A consummate artist, she is the creator behind the digital and NFT art collection Orchid Rhapsody.

OXO Living Announces, **OXO The Residences** Bali's Newest All-Villa Project

by Priyanka Elhence

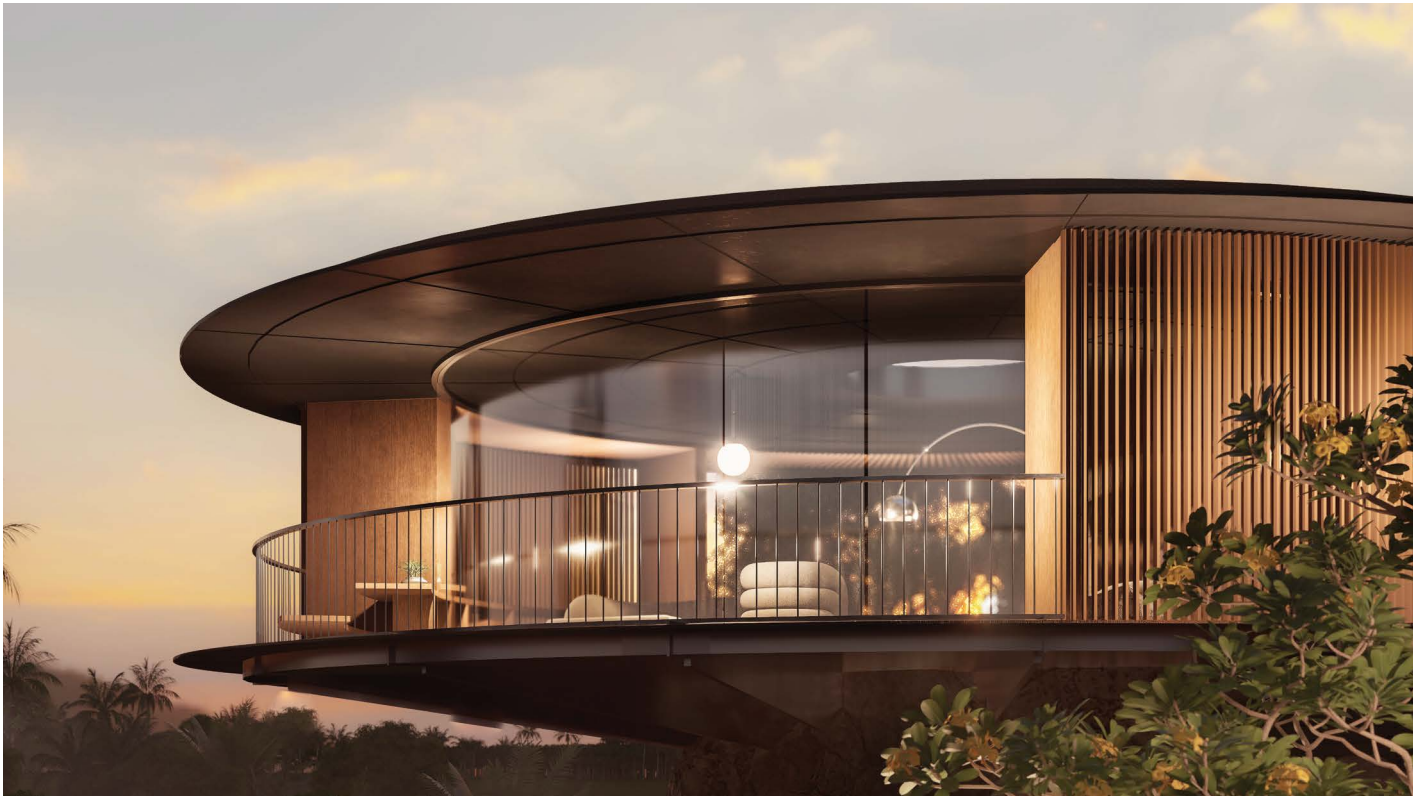


Indonesia's leading neo-luxury developer elevates comfort and luxury living with OXO The Residences, tailored to the tastes of Indonesian homebuyers.

OXO Living, a visionary in sustainable boutique property development and management, is set to launch its latest new venture, the luxurious OXO The Residences, in Bali's picturesque Nyanyi area by late 2026.

The IDR 500-billion all-villa project (US\$31 million) conceived in partnership with renowned architect Alexis Dornier, will boast 40 exclusive neo-luxury villas sprawled across two hectares, complete with state-of-the-art communal amenities, and will be integrated into the thriving ecosystem of the adjacent 44-hectare Nuanu City.

Located on the prime Balinese coastline in Tabanan, OXO The Residences is minutes from the central expat hub of Canggu, and Tanah Lot, which is famed for its temples and cultural attractions. With a philosophy that nurtures creativity, fosters connections and promotes holistic well-being, the project is anticipated to be Bali's next landmark destination, following the success of Canggu.



“OXO The Residences is poised to redefine neo-luxury living in Bali. Our commitment to international standards ensures that our developments resonate with both local and global audiences. Residents of OXO The Residences will have exclusive access to the myriad of facilities that the nearby Nuanu City has to offer, enhancing their living experience,” says Johannes Weissenbaeck, founder and CEO of OXO Living.

Reflecting OXO Living’s green credentials, the upcoming development will be equipped with solar panels, rainwater catchment areas, water treatment, osmosis water filters, and recycled or recyclable raw materials. Modern villas, ranging from 184 to 280 sqm, will be designed to appeal to a global clientele, with prices starting at IDR 7.5 billion (US\$500,000).

Alexis Dornier, the visionary architect of OXO The Residences, also shared his aspirations for the project. “Visually, our goal is to deliver a design that is both understated and emblematic. We aspire to create structures that harmonise with Bali’s natural beauty and cultural heritage, prioritising materials that are deeply rooted in the island’s identity and utilising local resources like the readily available bricks from Tabanan and the region’s distinctive volcanic stone.”

OXO Living was founded in Bali in 2015 with a vision to create a lifestyle that inspires and benefits both guests and investors, and has since established a reputation for

uncompromising standards, smart design and premium services. In a strategic pivot from its pre-pandemic focus on international clientele, OXO Living is now courting a predominantly domestic market with OXO The Residences, targeting an 80% local buyer base. This shift aligns with the robust growth of Indonesia’s residential property market, which Mordor Intelligence projects to expand from US\$67 billion in 2023 to US\$72 billion in 2024, and further to an estimated US\$105.7 billion by 2029. To date, OXO Living has developed and owns around 30 properties in Bali worth IDR 700 billion (US\$43 million), consisting of private residences, villas, townhouses, co-working studios, resorts and a 20-metre yacht in the Komodo National Park.

“Our collaboration thrives on a shared commitment to sustainability. We believe in the ethos of ‘building less to create more value, ensuring our developments are in harmony with the environment, a philosophy that is the cornerstone of a partnership that seamlessly blends architectural innovation with ecological consciousness,” says Dornier.

Weissenbaeck continues by saying, “Presently, Bali is undergoing a transformative shift in its property industry, fuelled by the emergence of the neo-luxury trend, a niche market that OXO Living is uniquely positioned to thrive in. All OXO Living property projects embrace the principles of zero waste, solidifying our expertise in sustainable development.” 🌱

Where chic meets conservation

by Angela Goh



Photos: Shinta Mani Wild

It is the rainy season, and the rainforest is spellbinding with swollen rivers flowing fast and furious, and the air bursting with monsoon freshness.

I take in this scenery and a deep breath before launching on a zipline ride, whizzing over lush canopy and swooping across a raging river. Finally, passing by roaring falls that resound like thunderous applause, I land at the pub-cum-hotel lobby of Shinta Mani Wild – A Bensley Collection, where checking in is part of the adventure.

Cradled in a lush river valley in Cardamom National Park in southwestern Cambodia (a 1.5-hour drive from Phnom Penh), the ultraluxe tented camp marries style with substance, offering an immersive yet responsible bespoke travel experience.

This Shinta Mani (meaning ‘good heart’ in Sanskrit) property places sustainability at its core through a high-yield, low-impact setup. The all-inclusive rate covers full board (alcohol included), all activities, unlimited spa pampering and funds the rangers who protect the jungle and wildlife from poachers and illegal loggers. (The surrounding area is home to endangered wildlife, including sun bears, clouded leopards and Siamese crocodiles.)

The owners, architect and hotel designer extraordinaire Bill Bensley and business partner Sokoun Chandprea (founder of the brand’s philanthropic arm, Shinta Mani Foundation), acquired the 350-hectare land in 2010, saving it from the clutches of miners.

No tree was felled to construct the 15 tented accommodation strung out along 1.5 km of the Thmor Rong River. Each tent is thoughtfully elevated to preserve natural pathways for wildlife and water flow, and set well apart for a sense of seclusion.

Unlike Bensley’s portfolio of over 200 hotels around the world, this little jungle hideaway is closest to his heart. “[Shinta Mani] Wild is my



playground. It is exactly what I always look for in a resort. It has a plethora of active things to do, but most importantly it has a real purpose – conservation of the rainforest,” says the Bangkok-based Bensley, whom *Architectural Digest* calls “a pioneer in sustainable hotel design”.

For the California-born, Harvard-trained landscape architect, his ‘utopia of sustainability’ has been personally rewarding. “[Shinta Mani] Wild, more than any of the palaces, fancy hotels or lavish homes that I have built over the past 40 years, gives my life meaning and validation.”

Heartfelt hospitality

Partnering with the non-profit Wildlife Alliance, Shinta Mani Wild funds an onsite ranger station where guests can visit. Inside are confiscated items such as snares, homemade rifles and chainsaws. Those game for a firsthand experience can also accompany armed rangers on their daily patrols.

In a country where poverty remains high, some resort to poaching or logging for livelihood. Under the Shinta Mani Foundation, the local community is offered jobs, training, education and micro financing. Currently, about 70 per cent of the 115 staff are from nearby villages.

Among them is Ghet Soten who had worked in a garment factory many hours away from her village before joining the construction team in 2017 to build the camp. Now with the housekeeping department, she is grateful for better job opportunities closer to home.

“It’s been such an enriching journey working at Shinta Mani Wild because I have learnt so much, like recycling, sorting

food waste and even first aid,” says Ghet, whose husband (from the same village), Mao Tin, doubles as a driver and zipline assistant at the property. His gentle smiling demeanour will allay any nerves guests may have while at the seven-storey tower preparing to zipline (or not) 400 metres to the property.

Jungle luxury

There are other less heart-stopping activities as well, from picnics at waterfalls, sundowners on a hill, foraging, to pontoon boating and endless spa indulgence. Or simply do nothing.

Indeed, I do just that at Tent #3 on its large open deck with a stream running beneath, soaking in the sights and sounds from a freestanding vintage bathtub followed by a soothing massage.

These seductively chic tents showcase Bensley’s whimsical take on a Cambodian jungle safari, awash in antiques, eclectic custom-made pieces and playful touches. All come with the necessary mod-cons (air conditioning and a full-size bar). Each tent though is individually themed paying tribute to nature, causes (my tent is a nod to the charity foundation) and historical icons (including King Norodom Sihanouk and Jacqueline Kennedy Onassis who visited Cambodia).

When night falls, the river’s torrent lull me to sublime slumber.

Dining is equally exquisite. The Headquarters serves set meals comprising local fare and imaginative fusion dishes – the chicken pate with chilli pickled papaya is a winner.

Shinta Mani Wild has come a long way since setting up tent in 2018. “Now having made *Conde Nast’s* Gold list, and been on several magazine covers and won many awards, we can proudly and humbly say we are a centrefold of eco-tourism,” says Bensley. But most of all, “is putting the Cardamoms on the world map.”

And for Bensley, “that is the most important step in conservation ... getting people to understand that there is a place that needs and is worth saving.” 🌿



About The Writer

Angela Goh is an avid traveller with a penchant for spas, safaris and trekking. Born in Penang, lived in Singapore and San Diego, currently based in Kuala Lumpur. The former news journalist now traverses the world to write about travel, wellness and gastronomy.



Eco-Friendly Elegance

Discover Nirup Island's Sustainable Luxury

by A. Yash

Nestled just 8 nautical miles south of Singapore and in the heart of Indonesia's Riau Archipelago, Nirup Island is an emerging resort that seeks to be a beacon of luxury, sustainability and exclusivity.

By early 2025, the five-star Westin Spa & Resort is scheduled to welcome guests to this exclusive getaway. When fully operational, the 20-hectare private island will feature a 94-room hotel as well as 52 private villas. The hotel building is nicely perched on top of a hill, and guests will be able to unwind at the iconic sunset bar set against the backdrop of an infinity pool, offering an unforgettable retreat in a world-class setting.

There will also be 30 private villas up for sale as private residences. During our visit there, we were brought to see a show unit. These private villas, branded under The Riahi Residences, offer an unparalleled living experience, characterised by its top-class interior design and breathtaking views of the surrounding natural beauty. From the one-bedroom to the three-bedroom overwater villas, each unit is thoughtfully designed to provide an exceptional and refined living space for residents.

The marina facilities on this island are managed by Singapore's ONE°15 Marina, the company renowned for their global experience in multiple countries such as the US, China, Malaysia, and Indonesia. The marina is already operational; yacht owners can park their luxury vessels and enjoy a range of water activities or simply take a dip in the pool. Nirup Island's marina currently offers berthing spots for 44 yachts of different sizes, and according to the marketing brochure,

there are plans to expand and cater up to 70 yachts in the next phase. Other offerings in the marina include 24-hour CCTV surveillance, a clubhouse, a beach club and a restaurant.

CIQ Ready

When we visited the island, we had to take a ferry from Batam, where a speedboat was waiting to take us to Nirup Island. In the near future, getting to Nirup Island will be hassle-free. Whether you're planning a quick transit using your private yacht or thinking of a delightful stay on Nirup Island, the immigration and customs processing at the island's CIQ office ensures your entry into Indonesian waters will be smooth and seamless.

The CIQ building is ready and will soon be able to welcome foreign visitors to the island.

Sustainable Philosophy

Developed by PT. Tritunas Sinar Benua, a subsidiary of Batam real estate icon PT Citra Buana Prakarsa, the resort weaves sustainability into the very fabric of its existence.

Speaking to Millionaireasia, Mr. Tommy Ho, the resort's project director revealed that the property owners wanted to plant the seeds of sustainability from the beginning, when the project was still on the drawing boards.

"During the design phase of the entire island, when we were planning the architecture, we had emphasised to the architect to prioritise passive cooling strategies in order to reduce energy consumption," said Mr. Ho.



The public spaces for example, are designed to maximise airflow, reducing the need for artificial cooling and energy consumption. The marina reception area is wide and airy, and despite the afternoon heat, we felt cool.

Sustainable Energy

The island boasts a massive array of solar panels that could harness the power of the sun. Put them all together side by side, the solar panels can fill up to a hectare of space. Most of the panels are located near the island's power generation facility, while the rest are strategically placed on the resort building rooftops.

The solar panels can generate up to 1 megawatt of clean electricity. And as a backup, the island has a 2-megawatt diesel electric generator. Even though the solar power is able to support the island's electricity needs, Mr. Ho said the plan is to use solar energy during the day and fall back on the diesel generator during the night. Solar not only powers the buildings but the resort buggies also have solar panels attached to their roofs.

"As much as we try to achieve net zero emissions, it is still kind of tough for the island," he added.

Water Conservation

For private islands, water supply can often be a challenge. To overcome this, the developers have implemented a water recycling and rain harvesting system. The heart of the rain harvesting system is a man-made reservoir that can hold up to 25,000 cubic litres of water.

Mr. Ho described: "So from the peak of the island, whenever it rains, the water will flow into this reservoir. And we actually did calculations. Let's say in a dry season, water can last for three months. So we have a three-month supply of water for both potable and irrigation use."

During our visit to the island, we were shown how the water filtration system works. Water is pumped to the filtration plant where pipes channel raw water through charcoal filters and then through reverse osmosis membrane filters. Fresh water comes out at the end of this filtration process.

Waste Management

The property owners are also implementing a waste management system. Mr. Ho said the property has established a recycling and composting programme to minimise waste going to the landfills. Organic waste for instance, will be turned into compost.

"It (compost) will later be used at the hotel as fertiliser for their herb gardens. And for landscaping, we are using native drought-resistant plants to minimise water usage and maintenance. These are some of our key strategies to reduce the need for fossil fuels and our strategy to reduce the carbon footprint", explained Mr. Ho.

Environmental Rejuvenation

As with all urban developments, there will be some impact to the environment. Nirup Island is no exception. The construction process of the marina inevitably caused some damage to the surrounding coral reefs and natural marine habitats. Workers we spoke to also said that there are not as many fishing spots around the island as before.

To mitigate these environmental concerns, the property owners are reaching out to experts. Mr. Ho said that the owners have engaged a team from the National University of Singapore to explore the possibility of doing some conservation work around the island.

"We have been in touch with them, and they actually came over a few times to check on the feasibility of it. We will share more information in the future," he added.

Looking ahead, Mr. Ho shared that the team is working hard to meet the full grand opening deadline early next year.

Mr. Ho concluded: "Besides Nirup Island, we have actually acquired a few other islands around Nirup. We have actually started work on this other island. It's about 10 hectares, and it's going to be a thematic water park. At the end of the day, we see Nirup Island as part of an ecosystem of islands that we are going to operate." 🌴

Soneva harnesses the power of

solar energy

for more sustainable and eco-friendly luxury

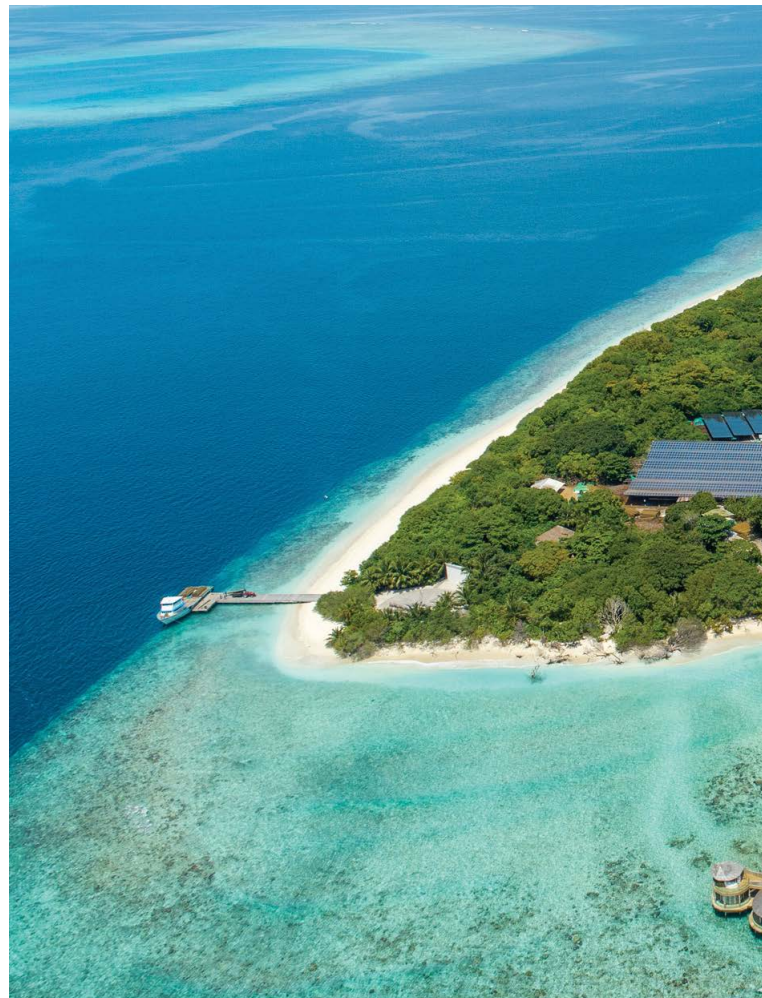
by Priyanka Elhence

Soneva Fushi and Soneva Jani target 50 percent of energy being derived from solar power in 2024.

Since 1995, Soneva, the award-winning sustainable luxury resort operator, has always been committed to a sustainable and eco-friendly footprint. And now the luxury group is making significant strides in its commitment to renewable energy in the Maldives, with a focus on solar energy. Leading the hospitality sector's transition towards clean energy and a zero-carbon future, Soneva is on a mission to achieve fully carbon-free operations across both its Maldives resorts by this year.

Both Soneva Fushi in the Baa Atoll and Soneva Jani in the Noonu Atoll have already been carbon neutral since 2012, and now they are aiming to achieve 50 percent of their energy to be generated from photovoltaic (PV) sources, thanks to the addition of new PV installations. Previously, the PV system at Soneva Fushi had supplied approximately only 12 percent of the resort's energy load. Incidentally, Soneva Fushi was also the first resort in the Maldives to install a solar power facility in 2008 to reduce operating costs by harnessing the island nation's abundant natural sunshine.

And now, Soneva has expanded its development of solar power with the US\$ 10 million funding from German-headquartered Aareal Bank in December 2022. This



Photos: Soneva



“Our investment in solar energy demonstrates our commitment to sustainability, while contributing positively to our bottom line.”

- Bruce Bromley

has seen Soneva Fushi’s solar installations totalling to 2.55 MWp (megawatt peak) of power and 2.7 MWh (megawatt hours) of battery capacity, while at Soneva Jani, the installations totalled up to 2.75 MWp of power and 2.0MWh of battery capacity.

“Our investment in solar energy demonstrates our commitment to sustainability, while contributing positively to our bottom line,” says Bruce Bromley, chief financial officer and deputy CEO at Soneva. “Embracing solar power on such a significant scale has substantially reduced our carbon footprint and demonstrate what is possible in the hospitality industry. The invaluable support from Aareal Bank has paved the way in integrating our energy systems with other renewable technologies, propelling us closer to our goal of achieving fossil fuel-free operations.”

"The financial sector plays a decisive role in the property sector transitioning towards a carbon-free future. At Aareal Bank, we are embracing this responsibility. It gives us great satisfaction to witness our joint

efforts bearing fruits and contributing to sustainable development on multiple fronts," states Thomas Adaemmer, managing director and head of Asia-Pacific at Aareal Bank.

To better harness the full potential of solar energy, the brand new Soneva Secret 2024 resort, located in the Maldives’ remote Haa Dhaalu Atoll, has also implemented floating solar panels in the surrounding ocean, and on land, which are expected to cover nearly 90% of the resort’s energy load.

Soneva is also further expanding its existing sustainability strategies, such as rainwater harvesting and load shifting, to maximise the utilisation of renewables, while assessing alternative storage technologies to further enhance energy usage. These include flow batteries that offer longer lifespans and the capacity to store substantial amounts of energy, as well as thermal storage to sustain and regulate renewable heat. 🌿



A brand new turtle-inspired
stay experience awaits at
**Jumeirah Al
Naseem**

by Priyanka Elhence

To commemorate the 20-year-anniversary of Jumeirah's Dubai Turtle Rehabilitation Project (DTRP), Jumeirah Al Naseem has introduced an exclusive guest experience dedicated to ocean conservation.



Photos: Jumeirah Al Naseem

DTTRP is run in collaboration with Dubai's Wildlife Protection Office, with support from Dubai's Royal Family veterinary facilities and laboratory work provided by the Central Veterinary Research Laboratory (CVRL). The project has been instrumental in releasing over 2,150 rehabilitated turtles back into their natural habitats since 2004. 86 of these turtles are monitored by satellite tracking.

After receiving initial treatment at Jumeirah Burj Al Arab's Aquarium, the turtles are moved to the resort's state-of-the-

art Turtle Rehabilitation Sanctuary before they are released. The project also runs an educational programme for school groups to deepen their understanding of the DTRP's work, the significance of these incredible creatures, and the challenges they face in their survival. This programme attracts around 1,700 school children from the seven emirates annually.

"As we celebrate 20 years of DTRP, and in view of the threats our oceans face, it is more important than ever to raise awareness of the critical conservation work being done to protect sea turtles," said Barbara Lang-Lenton, director of Aquarium at Jumeirah Burj Al Arab. "Initiatives like the turtle-inspired stay experience at Jumeirah Al Naseem not only offers guests a distinct and memorable experience, but it also provides a deeper awareness and vital support to the DTRP's efforts in rehabilitating and releasing these endangered species back into the wild."

Offering a range of specially curated experiences, the brand new Jumeirah Turtle Stay Experience includes a guided tour of the turtle rehabilitation facilities, starting with a behind-the-scenes tour of the Aquarium at Jumeirah Burj Al Arab where rescued turtles start the journey to recovery. From turtle-inspired welcome amenities to a behind-the-scenes look at the remarkable work of the project, every aspect of this experience is designed to provide a unique and meaningful stay.

The tour extends to the Turtle Rehabilitation Sanctuary at Jumeirah Al Naseem, comprising five outdoor lagoons, where resident turtles rebuild strength before being released back into the wild. Guests can also take part in the turtle feeding. A portion of the stay rate will be donated to the cause.

Complementing the experience is also the brand-new, limited-time only, ocean-themed four-hands Turtle Inspired Afternoon Tea at the luxurious Al Mandhar Lounge. This inaugural collaboration sees executive pastry Chef Julien Jacob teaming up with his mentor, renowned pâtissier and chocolatier Philippe Rigolot, to craft a special menu featuring signature savouries and sweets, and nostalgic creations inspired by childhood candies, served on ornate turtle tea stands, adorned with repurposed coral and marble.

Starting at AED 2,025++, this unique turtle-inspired stay experience (for a minimum of two nights) includes:

- Daily buffet breakfast
- Turtle-inspired welcome amenities
- Ocean-themed four-hands Afternoon Tea experience served at Al Mandhar Lounge from executive pastry Chef Julien Jacob and renowned pâtissier and chocolatier Philippe Rigolot
- Exclusive guided tour to the turtle rehabilitation facilities and aquarium at Jumeirah Burj Al Arab
- Guided tour and feeding at the Turtle Rehabilitation Lagoon at Jumeirah Al Naseem
- Complimentary selected non-motorised water sports
- Unlimited access to Wild Wadi Waterpark™
- Use of wellness facilities at Talise Spa, Talise Fitness and J Club
- Access to KiDS Club at Jumeirah Al Naseem for junior guests
- Collect exclusive Jumeirah One Points when you book direct through Jumeirah
- Access to a map link that enables guest to track the turtles that have been released 🐢



Beyond Traditional Therapies

A Breakthrough in Enhancing Cognitive Function and Well-being Using Neuro Soundwaves

by Toh Mu Qin

In a world where technological advancements are continuously pushing the envelope of human potential, neuro soundwave technology is emerging as an inventive tool for enhancing health and well-being. Imagine a portable headset designed to optimise sleep, boost concentration, enhance memory, and foster creativity – all while holding potential to delay and prevent cognitive decline. This isn't science fiction but a reality made possible through cutting-edge research and innovation. Here's a comprehensive look at how neuro soundwaves are impacting personal wellness.

The Mechanism – How Neuro Soundwaves Work?

At the core of this technology is the Activator, a sophisticated headset embedded with Brain Stimulator Soundwaves. This device employs a complex waveform consisting of five musical segments combined with specialised soundwaves. The goal is to stimulate synaptic growth and enhance neuron connections, leveraging the brain's natural plasticity (ability of neural networks to change through growth and reorganisation) to improve overall cognitive function.

1. **Relaxation Soundwave** – This initiates a meditative state, promoting neuron connections and enhancing brain function.
2. **Alpha Waves** – These waves stimulate the right hemisphere of the brain, fostering creativity and innovative thinking.

3. **Brainwave Synchronisation** – This function balances the left and right brain, reducing pressure on the right hemisphere and optimising the function of the corpus callosum, which connects the two hemispheres.
4. **Midbrain and Cerebellum Activation** – By activating the midbrain, this technology improves motor skills and sensory perception, while the cerebellum regulates fear and enhances coordination.
5. **Amygdala Enhancement** – This function improves emotional control and long-term memory by stimulating the amygdala, a key brain region involved in processing emotions.

Proven Benefits – Evidence from Clinical Trials

The effectiveness of neuro soundwave technology is supported by rigorous research and clinical trials. Results from various studies highlight significant improvements in several key areas:

1. **Enhanced Sleep Quality** – Clinical trials involving 100 hospital staff and patients showed an impressive 87.5% improvement in sleep quality. This is crucial as quality sleep is foundational for physical health and cognitive function.
2. **Improved Concentration** – Among 92 students tested, concentration and focus saw an improvement of 89.3%. Enhanced focus is vital for academic performance and productivity in various professional settings.

3. **Increased Creativity and Sensory Perception** – In a retail setting, there was a 14% increase in mall visitors and a 12% rise in spending, indicating that enhanced creativity and sensory perception can positively influence consumer behaviour.

Safety and Usability

Neuro soundwave technology is designed with user safety in mind. It is suitable for long-term use and safe for pregnant women and children. The technology is non-invasive, does not involve medication, and is not addictive, making it a compelling alternative to traditional therapies.

The Role of Neuro Soundwaves in Preventing Cognitive Decline

Cognitive decline and dementia are major concerns as we age. Neuro soundwaves offer a promising approach to mitigating these issues. According to research, brain stimulation can promote new connections between nerve cells, potentially generating new cells and enhancing neurological plasticity. This concept is supported by a 2006 Harvard Medical School article highlighting the importance of brain stimulation in maintaining cognitive function.

The Activator's soundwaves not only enhance brain functions but also play a role in preventing cognitive impairments. By continuously stimulating brain activity, the technology helps in maintaining and even improving cognitive functions, reducing the risk of age-related cognitive decline.

Applications Beyond Cognitive Health

Neuro soundwave technology has a range of applications apart from cognitive health. Its benefits extend to various areas:



1. **Learning Enhancement** – By improving focus and memory, neuro soundwaves can aid in educational settings and personal learning.
2. **Stress and Anxiety Reduction** – The Relaxation Soundwave helps manage stress and anxiety, leading to improved emotional well-being.
3. **Athletic Performance** – Enhanced concentration and sensory perception can contribute to better performance in sports and physical activities.
4. **Depression and Mood Disorders** – Specialised soundwaves like those in Neuro Joy are designed to elevate mood and alleviate symptoms of depression.

The Product Line – Tailored Solutions for Specific Needs

Neuro soundwave technology comes in various forms, each catering to different needs:

1. **Neuro Activator** – Designed to enhance sleep, concentration, memory, creativity, and sensory perception. It includes a 25-minute Brain Stimulator Soundwave and a 3-hour Sleep Soundwave.
2. **Neuro Joy** – Targets positive emotions and helps combat depression and anxiety with 8 different 3-hour Positive Emotion Soundwaves.
3. **Neuro Slumber** – Addresses sleep challenges with 20 different 8-hour Sleep Soundwaves, promoting restful and rejuvenating sleep.
4. **Neuro Golden Age** – Focuses on brain enhancement for older adults, improving cognitive functions and preventing dementia with a 30-minute Brain Enhancer Soundwave and an 8-hour Sleep Soundwave.
5. **Neuro Christianity and Neuro Buddhist** – These versions incorporate religious and spiritual elements, using Christian hymns and Buddhist sutras respectively, to foster relaxation, positive emotions, and improved sleep.

Innovating Cognitive Care for Tomorrow

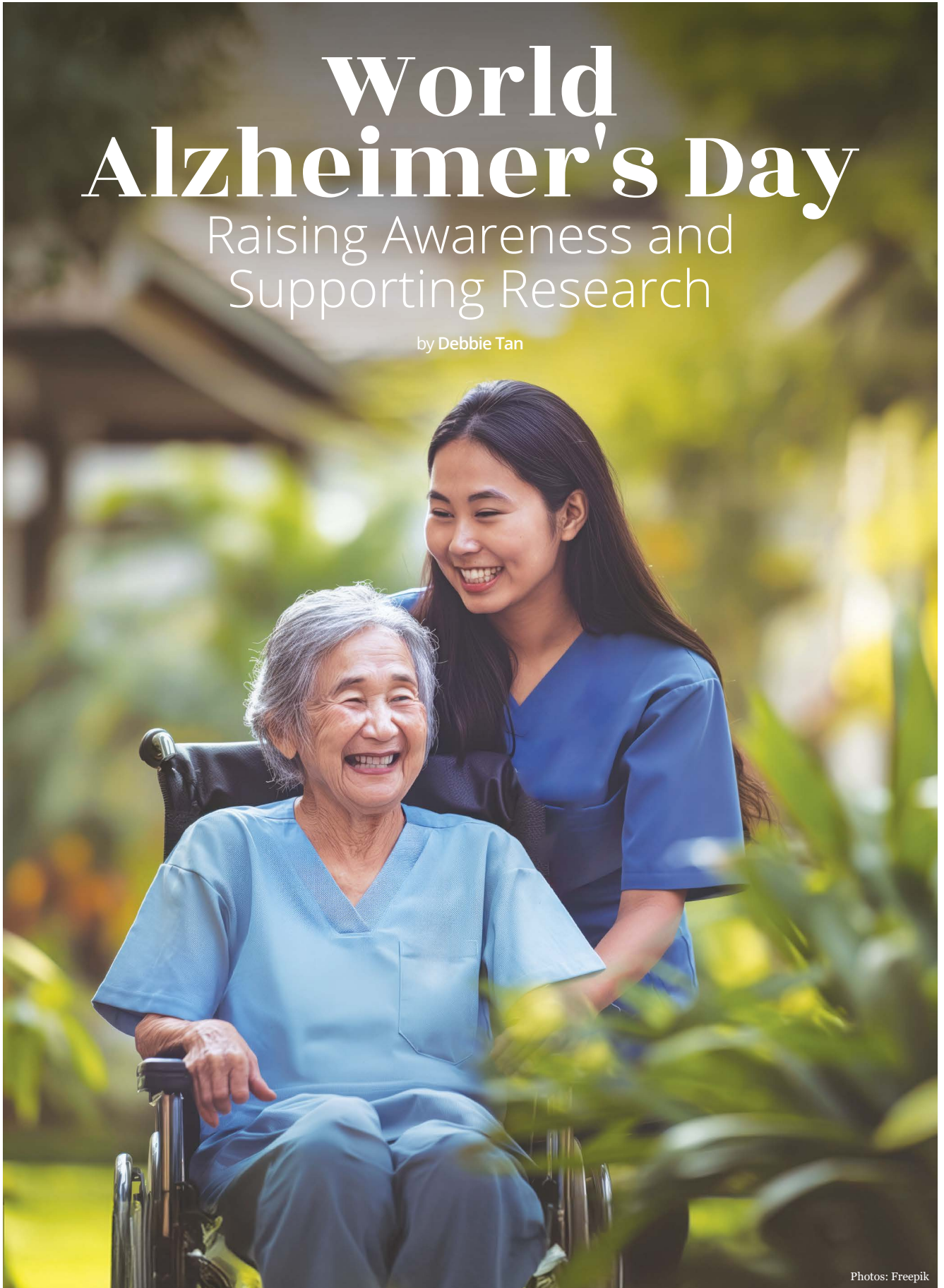
Neuro soundwave technology presents a major advancement in personal health and wellness. By channelling the power of soundwaves to enhance brain function, improve sleep, and foster emotional well-being, these headsets offer a non-invasive, drug-free alternative to traditional therapies. With the added potential to prevent cognitive decline and support mental health across various areas, neuro soundwaves are poised to become a cornerstone in the pursuit of a healthier, more balanced life. 🧘

Disclaimer: The health information in this article represents the research, opinions, and clinical trials gathered from Neuro Code Research Pte Ltd. It does not constitute medical or professional services. Always consult your doctor or qualified healthcare provider if you have any specific healthcare needs.

World Alzheimer's Day

Raising Awareness and
Supporting Research

by Debbie Tan



Photos: Freepik

Alzheimer's Disease, the most common form of dementia, affects millions of individuals worldwide. World Alzheimer's Day, observed annually on 21 September, aims to raise awareness and promote understanding of this debilitating condition. This article delves into the complexities of Alzheimer's Disease, exploring its causes, symptoms, treatment options, and the ongoing research that offers hope for the future.

What is Alzheimer's Disease?

Alzheimer's Disease is a progressive neurological disorder that impairs memory, thinking, and behavior. It is characterised by the accumulation of amyloid plaques and tau tangles in the brain, leading to the death of neurons and loss of brain function. Unlike normal ageing, Alzheimer's significantly interferes with daily life and is ultimately fatal. While Alzheimer's Disease is the most well-known form of dementia, it is not the only type. Dementia is a general term for a decline in cognitive ability severe enough to interfere with daily life. Alzheimer's accounts for 60-80% of dementia cases. Other types include vascular dementia, Lewy body dementia, and frontotemporal dementia, each with distinct pathological and clinical features.

Causes, Risk Factors, and Common Misconceptions

The exact cause of Alzheimer's Disease remains elusive, but it is believed to result from a combination of genetic, environmental, and lifestyle factors. Genetic factors include mutations in the APP, PSEN1, and PSEN2 genes, which are linked to early-onset Alzheimer's. The APOE-e4 gene is associated with an increased risk of late-onset Alzheimer's. Environmental and lifestyle factors, such as cardiovascular health, diet, exercise, and exposure to toxins, also play a role. There are several misconceptions about Alzheimer's Disease. One prevalent myth is that it is a normal part of ageing. While age is a significant risk factor, Alzheimer's is not an inevitable consequence of growing older. Another misconception is that aluminum exposure, through cookware or deodorants, causes Alzheimer's. There is no conclusive evidence to support this claim.

Symptoms, Stages, and Current Treatments

Alzheimer's Disease progresses through several stages, each marked by increasing cognitive and functional decline. Early signs often include memory lapses, difficulty finding words, and challenges with spatial awareness. As the disease advances, symptoms become more pronounced, including confusion, mood swings, and difficulty performing familiar tasks. In the final stages, individuals may lose the ability to communicate,

Alzheimer's Disease progresses through several stages, each marked by increasing cognitive and functional decline. Early signs often include memory lapses, difficulty finding words, and challenges with spatial awareness.

require full-time care, and become bedridden. Recent years have seen significant breakthroughs in Alzheimer's research. Scientists have made progress in understanding the disease's molecular and genetic underpinnings, paving the way for new treatment strategies. One notable development is the approval of aducanumab, a drug designed to reduce amyloid plaques in the brain. While its effectiveness is debated, it represents a crucial step in targeting the disease's root causes. Researchers are exploring various therapeutic approaches, including immunotherapy, gene therapy, and neuroprotective agents. Immunotherapy aims to harness the body's immune system to target and remove amyloid plaques. Gene therapy focuses on correcting genetic mutations associated with Alzheimer's. Neuroprotective agents seek to protect neurons from damage and support their survival. Early diagnosis of Alzheimer's Disease is crucial for effective intervention. Advances in diagnostic tools, such as positron emission tomography (PET) scans and cerebrospinal fluid (CSF) biomarkers, enable earlier and more accurate detection of the disease. These tools can identify amyloid plaques and tau tangles before clinical symptoms appear, allowing for timely treatment.

Technology is revolutionising the way Alzheimer's Disease is diagnosed and managed. Wearable devices and mobile applications can monitor cognitive function and detect subtle changes over time. Artificial intelligence (AI) and machine learning algorithms analyse data from these devices to predict the onset and progression of Alzheimer's, facilitating early intervention and personalised treatment plans. While there is no cure for Alzheimer's Disease, various treatments aim to manage symptoms and improve quality of life. Medications such as cholinesterase inhibitors (donepezil, rivastigmine, galantamine) and memantine can temporarily alleviate



symptoms. Non-pharmacological treatments, including cognitive therapy, physical exercise, and social engagement, also play a vital role in managing the disease.

Impact on Individuals and Families

Hearing from those directly affected by Alzheimer's Disease provides valuable insight into its impact. Personal stories from patients and caregivers highlight the emotional and psychological toll of the disease, as well as the resilience and strength required to navigate its challenges. These accounts underscore the importance of support networks and the need for continued research. Alzheimer's Disease profoundly affects both patients and their families. The gradual loss of cognitive abilities and independence can lead to depression, anxiety, and feelings of helplessness. Caregivers often experience significant emotional and physical strain, balancing their caregiving responsibilities with other aspects of their lives. Coping strategies and support resources are essential for maintaining mental health and well-being. Effective coping strategies for patients and caregivers include establishing routines, seeking professional support, and staying socially active. Organisations such as the Alzheimer's Association offer resources, support groups, and educational programmes to help individuals navigate the challenges of the disease. Connecting with others facing similar experiences can provide comfort and practical advice.

Support, Caregiving, and Prevention

Caregiving for someone with Alzheimer's Disease presents numerous challenges, including managing behavioural changes, ensuring safety, and providing physical care. Caregivers must balance these demands with their personal and professional lives, often leading to burnout. Solutions include respite care, where professional caregivers provide temporary relief, and caregiver training programmes to enhance skills and knowledge. Support networks and organisations play a crucial role in providing resources and assistance to those affected by Alzheimer's Disease. The Alzheimer's Association, Alzheimer's Society, and other local and global organisations offer support groups, helplines, and educational materials. These organisations advocate for research funding and policy changes to improve care and support for Alzheimer's patients and their families. While there is no guaranteed way to prevent Alzheimer's Disease, certain lifestyle changes may lower the risk. A healthy diet, regular exercise, mental stimulation, and social engagement contribute to brain health. The Mediterranean diet, rich in fruits, vegetables, whole grains, and healthy fats, is particularly beneficial. Physical activity improves blood flow to the brain and promotes neuroplasticity. Maintaining a healthy lifestyle supports overall brain health and may reduce

the risk of cognitive decline. Regular mental activities, such as reading, puzzles, and learning new skills, stimulate the brain and promote cognitive reserve. Social interactions and strong relationships also play a crucial role in maintaining mental well-being. Public awareness campaigns are vital for educating the community about Alzheimer's Disease and reducing stigma. These campaigns highlight the importance of early diagnosis, promote healthy lifestyle choices, and encourage support for research and caregiving initiatives. Increasing awareness can lead to better understanding and more compassionate care for those affected by Alzheimer's.

World Alzheimer's Day events and initiatives across the globe aim to raise awareness and funds for Alzheimer's research and support. Local events, such as memory walks, educational seminars, and community gatherings, provide opportunities for individuals to get involved and support the cause. These events foster a sense of community and solidarity among those affected by Alzheimer's Disease. Government initiatives play a critical role in addressing Alzheimer's Disease through funding research, supporting caregivers, and implementing public health strategies. Policies that promote early diagnosis, improve access to care, and provide financial support for families can significantly impact the quality of life for those affected. Collaboration between governments, healthcare providers, and advocacy organisations is essential for driving progress.

The Future of Alzheimer's Research

The future of Alzheimer's research holds promise for new treatments and potential cures. Advances in genetics, neurobiology, and technology are paving the way for innovative approaches to understanding and combating the disease. Researchers are optimistic about developing therapies that target the underlying causes of Alzheimer's and improve outcomes for patients. Emerging technologies, such as AI, wearable devices, and advanced imaging techniques, are revolutionising Alzheimer's research and treatment. These technologies enable earlier diagnosis, personalised treatment plans, and real-time monitoring of disease progression. The integration of technology into Alzheimer's care has the potential to transform the way we approach the disease and improve the quality of life for patients and caregivers. Individuals can contribute to the fight against Alzheimer's Disease by participating in advocacy, supporting research funding, and engaging in community initiatives. Donations to research organisations, volunteering for clinical trials, and raising awareness through social media and public events are impactful ways to make a difference. By working together, we can advance the understanding and treatment of Alzheimer's Disease and offer hope for a brighter future. 🌱

DELAY DEMENTIA



BRAIN-BOOST PROGRAMME



EXCLUSIVE DISCOUNT FOR
ANNUAL PACKAGE

**20%
OFF**

Improve your cognitive health and
SAVE UP to 20% off the annual fee
when you make full payment today!

NOW AVAILABLE
AT ONLY

\$24 A MONTH*



Sign up for a whole year's programme
and receive a Sacred Young Handbag,
worth **\$427!**

*for first year of subscription



Scan and purchase on our
website now to begin your
brain training programme.

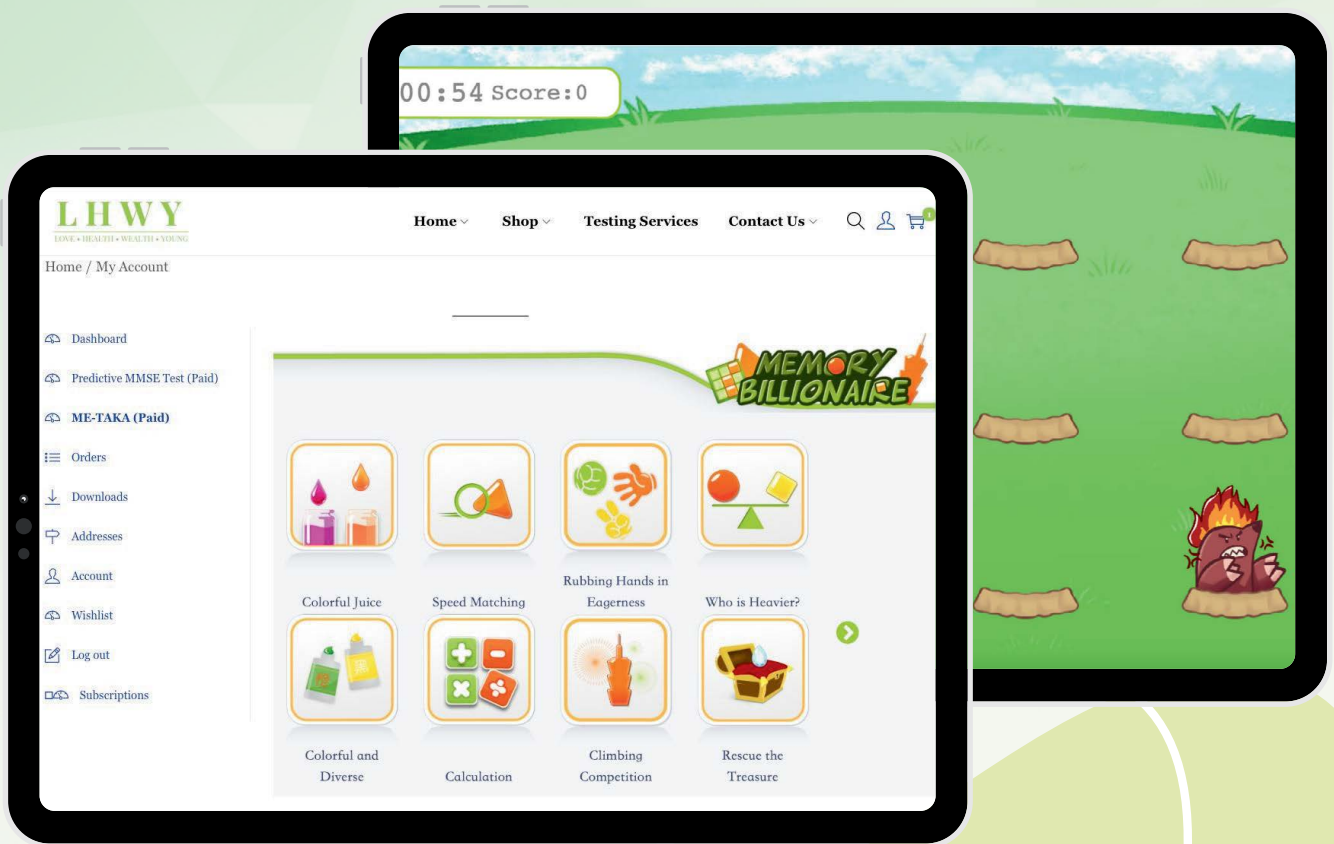


+65 6838 5333



enquiry@lhwy.sg

LHWHY
LOVE • HEALTH • WEALTH • YOUNG



TAKA

The Brain Boost Programme is able to **store quantitative training data** and analyse it through an AI software to provide analysis of training processes, therefore allowing training to be **personalised**.

Benefits

Offers 18 games designed to enhance cognitive skills by making training engaging and exciting:

- ✓ Memory
- ✓ Reaction
- ✓ Logic
- ✓ Attention



Uses large-area geometric monochrome graphics for easy identification of shapes and colours



Photo: Freepik

Innovative Green Architecture

Homes of the Future

by Christina Yip

In recent years, a profound shift has been taking place in the realm of architecture. The focus has shifted from mere aesthetics and functionality to incorporating sustainability at its core. This evolution has given rise to a new wave of architectural marvels that not only redefine luxury living but also prioritise environmental responsibility. These eco-friendly luxury homes and buildings serve as beacons of innovation, blending cutting-edge design with sustainable practices to create spaces that are both breathtaking and conscientious.

Pushing Boundaries: Architects at the Forefront

Architects around the world are leading the charge in redefining what luxury means in the context of green architecture. One such visionary is Ken Yeang, renowned for his bio-integrated skyscrapers that seamlessly blend with the

natural environment. Yeang's designs, such as the Eco Tower in Kuala Lumpur, Malaysia, are characterised by extensive greenery, energy-efficient systems, and a harmonious coexistence with nature. Ken Yeang's perspective on green architecture emphasises a holistic approach that integrates ecological principles with architectural design. According to Yeang, "The future of architecture lies in creating symbiotic relationships between buildings and their environments. It's about designing structures that not only minimise their environmental footprint but actively contribute to the surrounding ecosystem."

In the Netherlands, Stefan Boeri has gained acclaim for his innovative approach to urban greenery with projects like the Vertical Forest in Milan, Italy. These skyscrapers are adorned with thousands of plants, contributing to improved air quality while providing a unique aesthetic appeal.

Eco-Luxury Living: Experiences from Homeowners

Eco-luxury living represents a compelling fusion of luxury and environmental responsibility, epitomised by architectural marvels like The Edge in Amsterdam. Designed by PLP Architecture, The Edge stands as a beacon of sustainable urban development. Its integration of solar power, rainwater harvesting, and advanced ventilation systems not only enhances energy efficiency but also reduces environmental impact.

Residents of eco-luxury spaces such as The Edge experience a heightened quality of life, benefitting from improved indoor air quality, natural lighting, and innovative technologies that promote both comfort and sustainability. Beyond the environmental advantages, these homes often offer long-term cost savings through reduced energy consumption and a sense of community among like-minded individuals committed to sustainable living.

As cities worldwide grapple with the challenges of urbanisation and climate change, the demand for eco-friendly housing continues to rise. Architects and developers are increasingly embracing innovative design solutions and sustainable practices to meet this demand, ensuring that future residential developments prioritise both luxury and environmental stewardship.

Sustainable Materials and Renewable Energy

In the realm of sustainable architecture, the use of innovative building materials and renewable energy sources is reshaping the construction industry. Architects are increasingly opting for materials like recycled steel, reclaimed wood, and bio-based composites to reduce carbon footprints and promote a circular economy. These materials not only conserve natural resources but also enhance indoor air quality and contribute to healthier environments.

A notable example is the Brock Commons Tallwood House in Vancouver, Canada, designed by Acton Ostry Architects. This 18-storey residential tower showcases the potential of timber construction, offering structural integrity, energy efficiency, and significant carbon sequestration benefits. Advanced timber engineering techniques like cross-laminated timber (CLT) and glue-laminated timber (glulam) demonstrate how wood can be used effectively in high-rise buildings while supporting sustainable forestry practices.

Looking ahead, the future of sustainable architecture lies in continued innovation and integration of these materials and technologies. Embracing a lifecycle approach to building design ensures that environmental impacts are minimised from construction through to operation and eventual disposal. As global awareness and demand for sustainability grow, architects and developers are poised to lead the way towards an eco-friendlier built environment.

Integrating Nature into Urban Spaces

Beyond individual buildings, architects are reimagining entire urban landscapes to incorporate green spaces and biodiversity. Singapore exemplifies this trend with its visionary approach to urban planning, featuring rooftop gardens, vertical greenery, and eco-friendly infrastructure.

In Singapore's Punggol Eco-Town, residential developments are designed to blend seamlessly with the natural environment. These eco-friendly neighborhoods prioritise pedestrian pathways, public parks, and efficient waste management systems, fostering a sense of community while minimising environmental impact.

Challenges and Future Prospects

Despite the progress made in green architecture, challenges remain. Cost implications, regulatory frameworks, and public perception are significant barriers to widespread adoption. However, architects and developers are optimistic about the future, driven by technological advancements, growing environmental awareness, and evolving consumer preferences.

Innovative green architecture represents a convergence of visionary design, environmental stewardship, and luxury living. Architects and homeowners alike are embracing this paradigm shift, creating spaces that are as sustainable as they are stunning. As we look to the future, these examples serve as inspirations for a world where architecture not only respects nature but actively contributes to its preservation. 🌱



About The Writer

Having led and transformed fintech and blockchain companies across Asia since 2015, Christina is an accomplished chief marketing strategist. Her impressive track record includes accelerated growth in startups, ICO structuring, and leading marketing initiatives in various blockchain consultancy firms that worked with more than 200 blockchain projects, including Chainlink, Elrond, EOS, VeChain, NEO, Harmony, and Zilliqa. She is an expert in building effective distribution channels, forming strategic partnerships, and delivering high-impact advertising for customer acquisition, especially in the blockchain industry. Christina is also legally trained and has been actively involved in regulatory compliance topics in digital assets and emerging technologies. She is enthusiastic about the transition to Web 3.0 and believes in the creator economy fueling SocialFi projects.

The Rise of Eco-Conscious Fine Dining

by Christina Yip

In the realm of haute cuisine, a profound transformation is taking place – one that seamlessly integrates the principles of sustainability with the elegance and innovation of fine dining. As public awareness about environmental issues grows, top chefs and prestigious restaurants are reimagining every aspect of their culinary operations. They are revamping menus, altering sourcing practices, and refining kitchen processes to reduce their ecological footprint while continuing to deliver exceptional dining experiences. This shift towards eco-conscious fine dining marks a significant convergence of gastronomy and environmental responsibility, where creativity and sustainability are harmoniously intertwined.

Embracing Sustainability: Farm-to-Table Practices

Central to the philosophy of eco-conscious fine dining is the commitment to sourcing ingredients locally and seasonally, often directly from nearby farms. This 'farm-to-table' approach ensures not only the freshness and superior quality of ingredients but also supports local agriculture and

minimises the carbon footprint associated with long-distance food transportation. By forging closer connections with regional farmers and producers, restaurants contribute to the vitality of local economies and promote more sustainable food systems.

Noma, located in Copenhagen, Denmark, is a prime example of this ethos in action. Renowned for its inventive approach to Nordic cuisine, Chef René Redzepi and his team meticulously forage for wild ingredients and collaborate closely with local farmers. This seasonal menu shifts to reflect the natural bounty of the Nordic region, showcasing the rich flavors of local produce while adhering to principles of sustainability.

Zero-Waste Kitchens: Culinary Ingenuity

A growing trend among innovative chefs is the creation of zero-waste kitchens, where every component of an ingredient is utilised to minimise food waste. This approach not only mitigates environmental impact but also challenges chefs to

Photos: Vecteezy & Freepik



exercise their culinary creativity, transforming what might otherwise be discarded into gourmet delights.

Silvio Nickol at Palais Coburg in Vienna, Austria, is a stellar example of this practice. His menu reflects a commitment to sustainability through the imaginative use of scraps and leftovers, employing root-to-stem cooking techniques and creative preservation methods. By turning surplus ingredients into new, exciting dishes, Chef Nickol demonstrates how zero-waste principles can enhance both flavor and sustainability.

Innovation in Culinary Techniques

In addition to sustainable sourcing and waste reduction, eco-conscious fine dining embraces cutting-edge culinary techniques that prioritise environmental responsibility without compromising taste or presentation. Chefs are exploring new methods such as plant-based proteins, fermentation, and alternative cooking techniques to create dishes that are both delectable and eco-friendly.

Blue Hill at Stone Barns in Pocantico Hills, New York, exemplifies this integration of agriculture and culinary artistry under the leadership of chef Dan Barber. The restaurant is deeply involved in regenerative agriculture, which emphasises practices that restore and enhance the health of the ecosystem. By combining innovative farming techniques with sophisticated culinary skills, Blue Hill demonstrates how food production can be harmoniously aligned with sustainable principles.

Carbon Neutral Kitchens: Leading the Charge

Emerging as a crucial aspect of the eco-conscious fine dining movement is the pursuit of carbon neutral kitchens. This initiative involves taking comprehensive measures to reduce greenhouse gas emissions associated with kitchen operations, including energy use, waste management, and supply chain logistics. Chefs and restaurateurs are adopting a range of strategies to achieve this goal, from investing in energy-efficient appliances and renewable energy sources to implementing rigorous waste reduction programs and offsetting remaining carbon emissions through carbon credits or reforestation projects. For instance, several leading restaurants are transitioning to energy-efficient kitchen equipment and exploring the use of solar or wind power to reduce their reliance on fossil fuels. They are also adopting practices such as composting organic waste and using eco-friendly packaging materials. By setting ambitious targets for reducing their carbon footprint and offsetting emissions, these establishments are setting a new standard in the industry and encouraging others to follow suit.

The rise of carbon neutral kitchens represents a significant step forward in the evolution of fine dining, where the



commitment to environmental stewardship is not just an add-on but an integral part of the culinary experience. Through these efforts, restaurants are not only enhancing their sustainability credentials but also inspiring diners to make more informed and responsible choices about the food they enjoy.

The Future of Eco-Conscious Fine Dining

As the movement towards eco-conscious fine dining gains momentum, the future looks promising with continued innovation and collaboration across the culinary landscape. Chefs, restaurant owners, and diners alike are redefining luxury dining by embracing sustainability as a fundamental principle.

Looking ahead, advancements in agricultural practices, technology, and consumer awareness will likely further shape the evolution of eco-conscious dining. From urban farm collaborations to carbon-neutral kitchens, the possibilities are vast for creating a more sustainable and delicious future.

Eco-conscious fine dining represents a profound shift in how we perceive and experience luxury gastronomy. It's not just about the taste on the plate but also the journey from farm to fork, with each dish telling a story of sustainability and innovation. As more chefs and restaurants commit to environmental stewardship, the boundaries of what defines fine dining continue to expand, offering diners a chance to savour not only exquisite flavours but also a sustainable future. 🌱



Creating Generational Impact

Why millennial affluents are leading the shift towards impact investing?

by Urvashi Raizada

The investment landscape is undergoing significant changes. Digital innovation, for example, has transformed the financial services sector and widened doors to alternative investments like cryptocurrencies. Traditional venture capital has been disrupted by models like crowdfunding, and traditional fund management has been disrupted by self-serve platforms and robo advisors. Entrepreneurship continues to be democratized amidst the ongoing startup boom, while existing businesses have adopted environmental, social, and governance (ESG) considerations as the new gold standard for future-proofing.

It may be that disparate factors have contributed to these changes. But there is one common thread that is bringing them all together – the rise of the tech-savvy, impact-focused millennial investors.

Today, millennials comprise the largest generation of investors in history. They currently dominate the working world and will account for 75 percent of the global workforce by next year. They are also poised to benefit from the greatest wealth transfer in history, with an estimated \$90 trillion in projected inheritance coming their way.

The numbers say it all – the investment practices of this generation will shape the future of markets, wealth management, venture capital and more. And all signs point to a future that will usher in a new paradigm of conscious capital, sustainable returns and impact investing.

Introducing the Impact Generation

Millennials, or those born between 1981 and 1996, are a complex cohort.

According to the 2023 EY Global Wealth Research Report, millennial investors are significantly different in their preferences and behaviours when compared to other generations. They are 20 percent more likely than older generations to invest in alternative investments, for example, and are nearly twice as likely than Gen Z or Gen X to own cryptocurrencies. They also consider strong digital offerings as tantamount when selecting a wealth management provider, second only to a good track record of performance.

Importantly, millennial investors are also placing above-average emphasis on sustainable investment options, especially when compared to the previous baby boomer generations. In fact, a recent global study by deVere Group noted that 73 percent of millennials want their investment portfolios to include ESG criteria, while Goldman Sachs reported that billions of millennials are choosing to invest in companies that have embraced sustainable practices.

Mapping Millennial Motivations

Like any generation, these unique preferences and motivations have been greatly shaped by the unique experiences of their time.

As the first generation to grow up with the internet, for example, the millennial penchant and passion for digital innovation and technology should go without saying. However, growing up with the internet also presented them with unprecedented access to information and the ability to connect with larger social networks. As a result, millennials have emerged as a generation of global natives with awareness of social, environmental, and political challenges around the world. Tools like social media platforms have further enabled them to engage with global movements and causes, fostering a sense of global citizenship and responsibility.

Many millennials were also presented with economic uncertainty and financial crises early in their lives, with the Great Recession of 2008-2009 in particular having a profound impact on their economic outlook. Experiencing job losses, high unemployment rates, and financial instability firsthand invariably contributed to their inclination for making more

Today, millennials comprise the largest generation of investors in history. They currently dominate the working world and will account for 75 percent of the global workforce by next year.

cautious and value-driven financial decisions that can also contribute to societal stability and improvement.

Building for Better

But it's not just negative experiences that have shaped their outlook. Millennials are also the most educated generation in history, with higher levels of college and postgraduate education compared to previous generations. Education on global issues as well as areas like social entrepreneurship and sustainable business practices have expanded millennial mindsets, while growing urgency around issues like climate change may have offered practical use cases for the applications of these principles in the business world. Today, studies show that millennials are twice as likely to invest in companies or funds that target specific social or environmental outcomes.

Another important factor that continues to influence millennial investment interests is the advancement of transparency and accountability from the companies they invest in. Millennials expect companies to be transparent about their operations, environmental impact, and societal contributions. So much so that any inconsistency between a company's declared values and its actions can lead to a loss of trust and investment. The ripple effect of these expectations is reshaping corporate strategies and operational models, with many companies now proactively adopting sustainable practices and prioritising corporate social responsibility to align with the values of this new wave of investors.

Beyond Financial Returns

Unlike traditional investments, which primarily focus on maximising financial returns, impact investments seek to achieve measurable and positive impact on society or the environment in addition to financial gains. This dual objective makes impact investing a powerful tool for addressing global challenges while also creating sustainable financial growth – an ideal mix for the increasingly environmentally and socially conscious millennial affluent.



Photos: Freepik

According to the Global Impact Investing Network (GIIN), the impact investing market has grown exponentially in recent years and is currently worth over \$715 billion. A significant portion of this growth can be attributed to the millennial appetite for investments that align with their values.

Impact investments can be made across various asset classes, including stocks, bonds, private equity, and venture capital. Their versatility has also made them appealing to a diverse range of investors, contributing to the expansion of the impact investing market. Banks, pension funds, financial advisors, and wealth managers, for example, are offering investment opportunities to both individual and institutional clients interested in supporting general or specific social and environmental causes; while institutional and family foundations are leveraging their substantial assets to further their core social or environmental missions while maintaining or growing their overall endowments.

Targeting Impact and Growth

Some of the target sectors that are ripe for impact investing include renewable energy, affordable housing, healthcare, education, conservation, sustainable agriculture, and more. Companies like Tesla and Beyond Meat, for example, became

popular among millennial investors due to their commitment to sustainability and innovation. Having values that resonated made them an ideal choice for millennial investors who want to play a part in the green revolution while also benefiting from the growth of these forward-thinking businesses.

Millennials are also passionate about social impact, investing in ventures that address pressing social issues such as poverty, human rights and financial inclusion. Impact funds, which pool resources to invest in socially responsible projects, are gaining popularity among this demographic for this reason. The Rise Fund, co-founded by U2's Bono and TPG's Bill McGlashan, is one such example that focuses on investments that deliver measurable social and environmental impact alongside competitive financial returns.

The health and wellness sector is also receiving significant interest from millennials who are increasingly interested in areas like fitness, mental health, organic food, and wellness technologies. On the consumer front, their preference for brands that focus on sustainable practices, fair trade, and ethical sourcing also extends to publicly traded companies and private investments in sustainable consumer goods.

The ESG Effect

Investing based on values may be helping millennials support the causes they care about. But it's not just ethics alone that are driving interest – impact investment also offers significant financial benefits.

Older investors may still believe that socially responsible investments are likely to yield lower returns while being higher risk. However, impact investment growth over the last decade has resulted in the development of sophisticated investment and risk management models that gives investors the opportunity to include considerations like ESG into their investment portfolios without compromising on results.

The truth is that many impact investments today offer competitive, market-rate returns. Data shows that a significant portion of impact investments meet or exceed financial performance expectations. In fact, recent statistics from the GIIN revealed that 88 percent of impact investors felt their investments met or exceeded their expectations, with the median impact fund realising returns that were on par or just under the returns of non-impact funds.

The ripple effect of impact doesn't stop there. A study by the German investment fund DWS and the University of Hamburg, for example, found a strong correlation between ESG performance and positive returns. A part of the reason might be that companies who focus on sustainability and ethical practices are often better positioned to manage risks like environmental regulations, social unrest, and changing consumer preferences in the long term, making them more stable and resilient investments.

Growth in the sector has also helped government investors and development finance institutions demonstrate that achieving social and environmental benefits can also be financially sound and profitable. The increasing financial viability of public sector impact projects has led to a reduction in perceived risks that is encouraging more private investors to follow suit.

Balancing Challenging and Opportunities

While impact investing is on the rise, it is still subject to market volatility and risk. It also brings with it some unique challenges that millennial investors will need to contend with.

Measurement, for example, is a key area of challenge. Measuring the social and environmental impact of investments can be extremely complex, particularly since reporting metrics and frameworks are yet to be implemented in a standardised or universal manner. This complexity often makes it challenging to accurately assess the true impact of such investments.

Balancing financial returns with social and environmental impact can also present its own difficulties. Sometimes, achieving significant social impact may require the challenging trade-off of accepting lower financial returns or higher risks. Some impact investments, such as those in social enterprises or green bonds, may also have lower liquidity compared to traditional investments, presenting risks for millennials with financial responsibilities.

It is also important to note that impact investing is still a relatively nascent field, which presents challenges like limited investment opportunities or lack of infrastructure in certain areas. This can make it difficult for millennials to not only find suitable impact investments but conduct thorough due diligence on the ones they do find. The specialised knowledge and expertise required to find and vet such opportunities may require considerable time and resources.

Ultimately, much like any other investment, the magnitude of 'impact' an investment creates, whether it's social or financial, will come down to having the right market strategy and access to professionals who can competently manage the invested funds.

Ushering in a New Era

Despite these challenges, the potential benefits of impact investing continue to attract interest from millennial affluents who are driven to align their financial goals with their values. And solutions to these challenges may be closer on the horizon than most would think.

Technological advancements, for example, will continue to play a key role in overcoming challenges like access, analysis and risk. And as the impact investing sector continues to mature, the implementation of standardised metrics and reporting frameworks may only be a matter of time.

As a result, the road ahead for impact investing is still poised for significant growth, particularly as millennials take a leading role in the distribution of wealth. The significant rise in ESG adoption in recent years is a strong example of how millennial values are already being integrated into wider business frameworks and reshaping corporate outlooks. A trend that is expected to continue pushing companies across industries to adopt more responsible and transparent practices.

With the great wealth transfer already underway, millennials are setting a promising stage for a future where financial success and social good may finally come together as one. By continuing to prioritise investments that generate positive social and environmental impact, they might just succeed in transforming the investment landscape for good. 🌱

A Sustainable Aura for the **Luxury Industry**

by R Jacob

There's an Aura surrounding the luxury industry –
but it's not magic, it's blockchain technology.



Photos: Freepik and Vecteezy

Through Aura, brands can build trust with their customers and safeguard their reputation in the competitive luxury market.

Luxury and sustainability are not words you normally hear together in the same sentence – in fact, they are usually polar opposites. Times are changing, however, and people are more aware of the consequences of human actions on the natural world. The luxury industry is under increasing pressure to adhere to environmental regulations, and consequently, transition their businesses into a model that is sustainable for the planet.

Many of the big names in the industry have already begun switching to models that incorporate multiple aspects of sustainability. Efforts typically involve use of organic components, ethical sourcing of labour and raw materials, renewable resources, and more. Interestingly, one unlikely issue that impacts sustainability are the problem of counterfeits. With no solution in sight, a number of industry veterans came together to form the Aura Blockchain, aiming to tackle the problems plaguing the luxury industry, and thereby improving the sustainability of the overall ecosystem.

One for All, and All for One

The Aura Blockchain Consortium was developed as part of a collaborative effort between major luxury brands LVMH (Louis Vuitton, Bulgari, Hublot), Prada Group, and Cartier. Conceived as a response to the growing demand for transparency and authenticity in the industry, Aura leverages blockchain technology to enhance traceability and sustainability within the luxury sector. The primary motivation was to create a shared platform that could verify the authenticity of luxury goods and provide detailed product histories, thereby enhancing consumer trust and promoting sustainable practices.

Counterfeiting is another major problem in the luxury industry that Aura intends to address. All too often, you hear of unsuspecting customers excitedly acquiring what they believe to be a unique and prized piece for their collection, only for them to later discover that they have been duped into purchasing a counterfeit – despite paying thousands of dollars for it. This scenario is extremely common in the luxury trade, where the allure of high-end goods attracts not only eager consumers but also a thriving black market of counterfeit goods.

Reputed brands lose billions of dollars each year to the counterfeit trade. The global trade in counterfeit goods is estimated to be worth over \$500 billion, with luxury items

like handbags, watches, and clothing making up a significant portion of this market. The problem extends beyond financial loss – it undermines brand reputation, erodes consumer trust, and often funds illegal activities. Often, a significant amount of resources is spent on curbing the production and sale of counterfeits.

This is where Aura enters the picture. It aims to address all these issues in an efficient manner through the use of blockchain technology. Important information such as certifications, detailed product life cycles, suppliers, etc are stored for every product. All the data is stored on a blockchain, an immutable ledger that requires every other node on the blockchain to approve any changes being made. Effectively, this ensures that the data cannot be altered or tampered.

Hitching the Supply Chain to the Blockchain

Primarily, Aura solves a number of supply chain problems by providing detailed information on how goods are obtained. This includes data on specific mines or farms where raw materials are sourced, ensuring that materials are ethically sourced and comply with environmental standards. The platform also tracks the entire manufacturing process, detailing each step from raw material to finished product. Data on energy consumption, waste management, and the use of chemicals are all tracked and monitored. By offering this level of detail, Aura enables brands to identify areas for environmental improvements and optimise their production processes to increase sustainability. The suppliers involved in the production process are listed as well. This transparency allows consumers to verify that each supplier adheres to sustainable practices, further promoting ethical sourcing and manufacturing.

Aura has also been setting the bar for companies to meet their compliance for environmental certifications such as Fair Trade, Rainforest Alliance, and other standards that promote sustainable and ethical practices. By providing verifiable data on sourcing and production, Aura supports brands in meeting these standards and enhancing their credibility. Brands also benefit by being able to benchmark their progress against industry standards. Consumers with access to brand and product histories can then make more informed decisions, choosing products that align with their values regarding sustainability and ethics. This increased awareness drives demand for sustainably produced luxury goods, encouraging more brands to adopt ethical practices.



Counterfeit prevention is also taken care of by Aura. Every product on the Aura platform has a unique digital certificate, making it easy for consumers and retailers to verify authenticity. This reduces the demand and circulation of counterfeit goods, which are often produced without regard for environmental or ethical standards. Consequently, resources are not wasted on producing fake goods. Brands also save on valuable time and resources spent on cracking down on the trade of counterfeit goods. Unlike counterfeits, authentic goods are made to higher standards, and have a much longer lifespan and better environmental footprint.

Another way in which Aura supports sustainability is through encouraging circular economy practices. Aura's blockchain tracks the entire lifecycle of a product, including resale and recycling. This supports the circular economy by promoting the reuse and recycling of luxury goods, helping reduce waste and the demand for new raw materials. By providing detailed maintenance and care instructions, Aura helps consumers extend the life of their luxury items, further reducing waste and environmental impact. Aura also supports the second-hand market for luxury goods by ensuring that resale items are authentic, and their histories are fully traceable. This

encourages consumers to buy pre-owned items, reducing the demand for new products and the associated environmental impact. The platform can integrate with recycling programs, ensuring that end-of-life products are properly recycled rather than discarded, minimising environmental impact.

Leading by example

Several leading luxury brands have now successfully integrated Aura into their operations, showcasing the platform's potential to drive positive change in the industry. Notably, and perhaps unsurprisingly, all the founding members use Aura intensively.

Louis Vuitton was one of the first luxury brands to integrate Aura into its operations. The brand uses the blockchain to offer customers a digital passport for their products. This digital certificate allows customers to verify the authenticity of their luxury items at any point, ensuring they are purchasing genuine Louis Vuitton products. Additionally, the blockchain tracks the entire lifecycle of the product, from sourcing materials to production, distribution, and resale.

Bulgari uses Aura to certify the authenticity and provenance of its jewellery and watches. By scanning a QR code, customers can access the complete history of their product, including the origin of the gemstones, the craftsmanship involved, and the ethical standards adhered to during production. This builds trust and reassures customers about the quality and authenticity of their high-value purchases.

Hublot employs Aura to offer a digital certificate of authenticity for its luxury watches. Like other items on the blockchain, this certificate is immutable, meaning it cannot be tampered with. Customers can use this certificate to prove the authenticity of their watch when reselling it, which also helps maintain the value of the timepiece.

Prada uses the Aura blockchain to enhance transparency across its supply chain. For instance, the brand provides detailed information about the sourcing of raw materials, such as leather and fabrics, used in its products. This includes data on the farms or processing plants where the materials were obtained, ensuring they meet high ethical and environmental standards. Prada customers can also access information about the production process, including the craftsmanship and techniques used, fostering a deeper connection between the consumer and the product.

Cartier uses Aura to authenticate and track its high-end jewellery and watches. The brand ensures that each piece is accompanied by a digital certificate stored on the Aura blockchain. This certificate provides detailed information about the sourcing of precious metals and stones, the craftsmanship involved, and the product's journey from production to sale.

These illustrate how Aura is helping luxury brands maintain authenticity, transparency, and sustainability – factors which are increasingly critical for today's consumers. Through Aura, brands can build trust with their customers and safeguard their reputation in the competitive luxury market. Till date, Aura has logged in more than 40 million products onto its blockchain and are actively adding more every month.

Slow and Steady

Despite its success, the adoption of Aura has not been without challenges. Initial resistance from industry players, the need for extensive data collection, and the integration of blockchain technology into existing systems have posed significant hurdles. However, the benefits of enhanced transparency, sustainability, and consumer trust far outweigh these challenges.

Nonetheless, Aura aims to expand its reach and capabilities. Future developments may include integrating more advanced technologies, such as artificial intelligence and Internet of Things (IoT), to further enhance data accuracy and traceability. Additionally, Aura plans to collaborate with even more luxury brands and sectors, broadening its impact on sustainability and transparency.

The future of Sustainable Luxury

As the consumer demand for transparency and sustainability continues to grow, initiatives like Aura will play an increasingly vital role in shaping the future of the luxury market. Aura represents a significant advancement in the luxury industry that addresses critical issues of authenticity, transparency, and sustainability. By leveraging blockchain technology, it has created a platform that not only combats counterfeiting but also promotes ethical and environmental practices. Through its innovative and technical approach, Aura is paving the way for a more sustainable and responsible luxury industry, benefiting brands, consumers, and the planet alike. 🌱



About The Writer

Jacob is a writer with a strong tech background. An engineer turned writer/artist, he has varied interests encompassing technology, flow arts, music and entrepreneurship. Having worked in the IT and EduTech industry before moving on to establish his own business, he believes in employing a multi-faceted approach in all his endeavours.



The Green Evolution

How Singapore's Laws Foster Sustainable Living

by Ignatius Tan Gim Wee



Policy and legislative frameworks play a pivotal role in shaping sustainable practices across various sectors in Singapore. In an era of increasing environmental consciousness, the integration of sustainability into everyday life is not merely a trend but a legal imperative. This article examines some of the policy and legislative measures that facilitate this alignment.

Policy Context

Sustainability-related laws in Singapore exist within a larger policy context. This context is based on the Sustainable Singapore Blueprint and the Singapore Green Plan 2030.

Singapore's commitment to sustainability is encapsulated in its Sustainable Singapore Blueprint, a comprehensive policy

document that outlines the nation's long-term vision for sustainable development. This blueprint covers a wide range of critical areas including the economy, society, environment, and governance. Legal mandates derived from this blueprint provide a robust foundation for integrating sustainable practices into both high-end residential and commercial developments, setting the overall direction for Singapore's sustainable journey.

The Singapore Green Plan 2030 is a comprehensive national strategy aimed at achieving environmental sustainability goals within the broader framework of the Sustainable Singapore Blueprint. Launched in February 2021, the plan outlines Singapore's environmental targets over the next decade and is structured around five key pillars:

1. City in Nature
2. Sustainable Living
3. Energy Reset
4. Green Economy
5. Resilient Future

Resource Sustainability Act

Building on the foundation of the Sustainable Singapore Blueprint and the Singapore Green Plan 2030, the nation has advanced its commitment to sustainability through targeted legislative measures. Among these is the Resource Sustainability Act 2019, which is a key piece of legislation aimed at fostering a more sustainable and resource-efficient Singapore. Its primary focus is on addressing three major waste streams: e-waste, food waste, and packaging waste.

Key features of the Act include:

- **Producer Responsibility:** Imposing obligations on producers of electrical/electronic waste, and food waste to manage their products at end-of-life. This includes setting up collection and recycling systems.
- **Packaging Management:** Requiring companies importing or using packaging in Singapore to report packaging data and develop reduction, reuse, and recycling plans.
- **Food Waste Management:** Mandating on-site food waste treatment for large food waste generators, promoting a circular economy approach.
- **Regulatory Framework:** Establishing a regulatory framework for producer responsibility schemes, ensuring proper management of waste.
- **Data Collection:** Requiring the reporting of packaging data to inform policy development and waste management strategies.

By implementing these measures, the Act aims to reduce waste generation, promote recycling and encourage a more circular economy in Singapore.

Carbon Tax

The Carbon Pricing Act 2018 is part of Singapore’s strategy to reduce greenhouse gas emissions and transition to a low-carbon economy. Its primary objective is to impose a tax on greenhouse gas emissions from specific facilities.

Key features of the Act include:

- **Carbon Tax:** Imposing a tax on greenhouse gas emissions produced by facilities emitting 25,000 tonnes or more of greenhouse gases annually.
- **Tax Rate:** Progressively increasing the carbon tax rate to incentivize emissions reduction.
- **Reporting Requirements:** Mandating covered facilities to report their greenhouse gas emissions annually.
- **Regulatory Framework:** Establishing a regulatory framework for the implementation and enforcement of the carbon tax.
- **Revenue Generation:** Using the carbon tax revenue to support government initiatives related to climate change mitigation and adaptation.



Singapore has been proactive in developing a robust legal and regulatory framework to support green finance, having implemented a series of laws, regulations, and initiatives to foster a sustainable financial ecosystem.

By pricing carbon emissions, the Act aims to encourage businesses to adopt cleaner technologies and processes, thereby reducing their environmental impact.

The implementation of the Carbon Pricing Act 2018, along with other key legislations such as the Resource Sustainability Act, underscores Singapore's commitment to reducing greenhouse gas emissions and fostering a sustainable environment. However, achieving comprehensive sustainability requires a multifaceted approach that extends beyond specific laws. To this end, Singapore has introduced a range of policy measures designed to promote sustainability across various sectors.

Green Finance and Investment

To support the transition towards a low-carbon economy, the Monetary Authority of Singapore (MAS) has positioned Singapore as a leader in green finance. Singapore has been proactive in developing a robust legal and regulatory framework to support green finance, having implemented a series of laws, regulations, and initiatives to foster a sustainable financial ecosystem. The key legal and regulatory areas include:

- **Green Bond Framework:** Singapore has established a robust green bond framework aligned with international standards, providing clarity and credibility for issuers and investors.
- **Tax Incentives:** The government offers tax incentives for green investments and projects, encouraging private sector participation in sustainable initiatives.
- **Disclosure Requirements:** Increasing emphasis is placed on environmental, social, and governance (ESG) disclosures, promoting transparency and accountability in the financial sector.
- **Climate-Related Financial Risks Management:** MAS has introduced guidelines for financial institutions to assess and manage climate-related financial risks, enhancing the resilience of the financial system.
- **Sustainable Finance Labelling:** Initiatives are underway to develop clear and consistent labelling standards for green financial products, facilitating investor decision-making.

Green Mark Certification Scheme

The Green Mark is a certification scheme developed by the Building and Construction Authority (BCA) in Singapore to recognise buildings that are environmentally friendly and sustainable. It assesses buildings based on various criteria, including energy efficiency, water conservation,

waste management, indoor environmental quality, and site sustainability. By encouraging sustainable design and construction practices, the Green Mark aims to promote a greener built environment and improve the overall quality of life in Singapore.

Electric Vehicles and Green Transport

Singapore's policy framework promotes the adoption of electric vehicles (EVs) through generous incentives and regulatory measures aimed at phasing out internal combustion engine vehicles by 2040. This transition is transforming the automotive market, where EVs represent a fusion of advanced technology and sustainability, driven by a robust policy infrastructure.

Zero Waste Masterplan

Singapore's Zero Waste Masterplan aims to reduce waste sent to landfill by 30% and achieve an overall recycling rate of 70% by 2030. It focuses on shifting from a linear "take-make-dispose" model to a circular economy. Key strategies include reducing waste generation, promoting recycling, and transforming waste into valuable resources. The plan targets specific waste streams like e-waste, food waste, and packaging, with measures such as producer responsibility schemes and infrastructure development.

Conclusion

Singapore has established a robust legal and regulatory framework to underpin its sustainability goals. A multifaceted approach, encompassing statutory mandates and policy instruments, characterises the nation's commitment to environmental stewardship. From the Resource Sustainability Act to the Carbon Pricing Act, Singapore's legislative landscape demonstrates a proactive stance on resource efficiency and climate change mitigation. This comprehensive framework, coupled with ongoing policy refinements, positions Singapore as a regional frontrunner in sustainable development and provides a solid foundation for future environmental initiatives. 🌱



About The Writer

Ignatius Tan Gim Wee, Chief Technology Officer, R S Solomon LLC.

Disclaimer: The content provided in this article is intended for informational purposes only. The content is not intended to be, nor should it be interpreted as, legal advice or legal opinion. The reader should not rely on the content presented here for any purpose, and should always seek the legal advice of counsel in the appropriate jurisdiction.



绿色进化

新加坡法律如何促进 可持续生活

by Ignatius Tan Gim Wee



Photos: Freepik and Vecteezy

政策和立法框架在塑造新加坡各行业的可持续实践方面发挥着关键作用。在环保意识日益增强的时代，打造可持续的日常生活不仅是一种趋势，更是一种法律要求。本文将探讨一些促进可持续生活的政策和法律措施。

政策背景

新加坡的可持续发展相关法律需结合更广的政策背景去了解。这一背景以新加坡可持续发展蓝图和2030年新加坡绿色发展蓝图为基础。

新加坡对可持续发展的承诺体现在其新加坡可持续发展蓝图中，这是一份全面的政策文件，概述了新加坡对可

持续发展的长期愿景。这份蓝图涵盖了经济、社会、环境和治理等广泛的关键领域。从这一蓝图衍生的法律法规为将可持续实践融入高端住宅和商业发展提供了坚实的基础，为新加坡的可持续发展之路设定了总体方向。

2030年新加坡绿色发展蓝图是一项全面的国家战略，是为了在新加坡可持续发展蓝图的更广泛框架内实现环境可持续发展目标。该计划于2021年2月启动，概述了新加坡未来十年的环保目标，并围绕五大支柱构建：

1. 大自然中的城市
2. 可持续生活
3. 能源重置
4. 绿色经济
5. 具韧性未来

可持续资源法案

在新加坡可持续发展蓝图和2030年新加坡绿色发展蓝图的基础上，新加坡通过有针对性的立法措施推进了对可持续发展的承诺。其中包括2019年推出的可持续资源法案，一项旨在促进新加坡可持续发展和资源节约的重要立法。其主要重点是解决三大垃圾源：电子垃圾、食品垃圾和包装垃圾。

该法案的主要特点包括：

- 制造商责任：要求电子电气垃圾和食品垃圾的制造商对报废产品进行管理。其中包括建立收集和回收系统。
- 包装垃圾管理：要求在新加坡进口或使用包装的公司报告包装数据并制定减少、再利用和回收计划。
- 厨余管理：立法要求大型餐厨垃圾产生者进行就地处理，推广循环经济。
- 监管框架：建立制造商责任计划的监管框架，确保垃圾得到妥善管理。
- 数据收集：要求报告包装数据以优化政策制定和垃圾管理策略。
- 通过实施这些措施，该法案意在减少垃圾产生，促进回收利用并鼓励新加坡发展更加循环的经济。

碳税

2018 年碳定价法案是新加坡减少温室气体排放和向低碳经济转型战略的一部分。其主要目标是对特定设施的温室气体排放征税。

该法案的主要特点包括：

- 碳税：对每年排放25,000吨或更多温室气体的设施产生的温室气体排放征税。
- 税率：逐步提高碳税率，激励减排。
- 报告要求：要求涵盖的设施每年报告其温室气体排放量。
- 监管框架：建立碳税实施和执行的监管框架。

- 创收：利用碳税收入支持与减缓和适应气候变化相关的政府举措。

该法案旨在通过对碳排放定价，鼓励企业采用更环保的技术和工艺，从而减少对环境的影响。

2018 年碳定价法案以及可持续资源法案等其他重要立法的实施，凸显了新加坡减少温室气体排放和促进可持续环境的承诺。然而，实现全面可持续发展需要采取超越具体法律的多方面方法。为此，新加坡推出了一系列旨在促进各个领域可持续发展的政策措施。

绿色金融与投资

为了支持向低碳经济转型，新加坡金融管理局 (MAS) 将新加坡定位为绿色金融的领导者。新加坡积极制定强有力的法律和监管框架来支持绿色金融，并实施了一系列



法律、法规和举措来促进可持续的金融生态系统。主要法律和监管领域包括：

- **绿色债券框架：**新加坡建立了符合国际标准的健全的绿色债券框架，为发行人和投资者提供清晰度和可信度。
- **税收优惠：**政府为绿色投资和项目提供税收优惠，鼓励私营部门参与可持续发展计划。
- **披露要求：**增加对环境、社会和公司治理 (ESG) 披露的重视，促进金融部门的透明度和问责制。
- **气候相关金融风险管理：**新加坡金融管理局为金融机构提供了评估和管理气候相关金融风险的指导方针，增强金融体系的韧性。

- **可持续金融标签：**目前正在采取措施，制定清晰、一致的绿色金融产品标签标准，方便投资者决策。

绿色建筑认证计划

绿色建筑标志是新加坡建设管理局 (BCA) 制定的一项认证计划，目的在于认可环境友好和可持续的建筑。该计划根据各种标准对建筑进行评估，包括能源效率、节水、垃圾管理、室内环境质量和场地可持续性。通过鼓励可持续的设计和施工实践，绿色建筑标志意在促进更绿色的建筑环境并提高新加坡的整体生活质量。

电动汽车和绿色交通

新加坡的政策框架通过慷慨的激励措施和监管措施来推动电动汽车 (EV) 的普及，旨在2040年完成内燃机汽车的淘汰。这一转变正在改变汽车市场，在强大的政策基础设施的推动下，电动汽车代表着先进技术与可持续性的融合。

零废弃总蓝图

新加坡的零废弃总蓝图旨在将送往垃圾填埋场的垃圾减少 30%，并在2030年实现 70% 的总体回收率。该规划的重点是从“获取-制造-处置”的线性模式转向循环经济。关键策略包括减少垃圾产生、促进回收利用以及将垃圾转化为有价值的资源。该计划针对特定的垃圾流，如电子垃圾、食品垃圾和包装垃圾，并采取制造商责任计划和基础设施建设等措施。

结论

新加坡建立了健全的法律和监管框架，以支持其可持续发展目标，并多管齐下，包括推行法规和采取政策，表明了其致力于环境保护的决心。从可持续资源法案到碳定价法案，新加坡的立法环境表现了其在资源效率和减缓气候变化方面的积极态度。这一综合框架加上持续的政策改进，使新加坡成为可持续发展的区域领跑者，并为未来的环保举措奠定了坚实的基础。🌱



About The Writer

Ignatius Tan Gim Wee, Chief Technology Officer, R S Solomon LLC.

本文提供的内容仅供参考。该内容无意也不应被解释为法律建议或法律意见。读者不应出于任何目的依赖此处提供的内容，并应始终寻求适当司法管辖区律师的法律建议。



Millionaireasia[®]

IT'S ABOUT LIVING LIFE TO THE FULLEST

SINGAPORE EDITION

Breaking the Silence

Raising Awareness on World Alzheimer's Day

From Waves to Wellness

A Breakthrough in Enhancing Cognitive Function & Well-being Using Neuro Soundwaves

**Dr. Jennifer MacDiarmid and
Dr. Himanshu Brahmbhatt**

Meet the Pioneers Behind

EnGeneIC's Game-Changing Cancer Treatment

Youthlocked

LHWY
LOVE • HEALTH • WEALTH • YOUNG

LEARN WITH US

How does Youthlocked increase Biological Age?

2 Ingredients of Youthlocked that lengthens telomeres:

- 1. Mangosteen:** the concentrated juice contains GM-1, a natural substance crucial for balancing immunity.
- 2. Centella Asiatica:** possess potent antioxidant properties and aids in DNA repairs.
- 3. Guava fruit juice powder:** has a high Antioxidant capacity which reduces frailty of the consumer.
- 4. Black sesame seeds:** contain an abundance of antioxidants.
- 5. Isolated soy protein:** improves lipid profile for enhanced cardiovascular health through cholesterol management.

- 1** Youthlocked contains ingredients that has high concentrations of **anti-oxidant properties** which help to increase the lengths of telomeres in your body. Studies have shown that taking Youthlocked for a period of time can positively impact your biological age and enhance overall well-being.



The Timeless Appeal and Sustainable Innovations of the Greenline 48 Yachts

by Toh Mu Qin

In the world of yachting, where trends ebb and flow, the Greenline 48 showcases a combination of perennial design and environmental responsibility. Launched a decade ago, this mid-sized cruiser has not only withstood the test of time but has thrived, with its 117th unit already on the water and production set to hit 12 units this year. The Greenline 48, offered in both Coupe and Flybridge versions, epitomises the fusion of classic elegance and modern efficiency, ensuring its relevance and appeal across diverse markets.

Everlasting Charm

The Greenline 48 has earned its place as a classic gentleman's cruiser through meticulous design and thoughtful engineering. Its timeless aesthetic continues to captivate both seasoned powerboaters and former sailors alike. The yacht's design features a seamanlike forward master cabin, offering abundant natural ventilation and a smooth, step-free transition from the cockpit to the large saloon. This seamless layout not only enhances the aesthetic appeal but also contributes to a more stable and comfortable cruising experience.

The Greenline 48's broad, shallow forefoot hull design minimises wave slap at anchor, providing a quieter and more pleasant onboard experience. This design, reminiscent of a sailing boat, allows for a smoother, more efficient passage through the waves. The spacious deck saloon, deep protected cockpit, and flexible accommodation further emphasise Greenline's commitment to creating a superior ownership experience.

Sustainable Innovations

Greenline Yachts, with its philosophy of Responsible Yachting, integrates sustainability into every aspect of the Greenline 48. This approach prominently features the yacht's impressive

solar power system. Standard with nine high-quality solar panels, the Greenline 48 generates over 15 kWh of power daily, reducing the reliance on generators and enhancing the yacht's autonomy. This green innovation aligns with Greenline's commitment to minimising environmental impact.

The yacht's hybrid H-Drive propulsion system demonstrates this commitment to sustainability. The upgraded 6G version of this system combines twin 24 kW electric motors with twin diesel engines, allowing for a silent e-cruising speed of 5 knots and a top speed of around 24 knots. This hybrid system not only reduces noise but also ensures efficient fuel consumption and lower emissions.

Greenline's dedication to eco-friendly practices includes land-based initiatives. The shipyard employs recycled PET plastic in its high-tech foam sandwich hulls and uses vinyl-ester resin, which comes with a five-year warranty against osmosis. The company's commitment to reducing waste is evident in its production processes, where offcuts are repurposed into heating pellets and foam remnants are used for home insulation. Furthermore, Greenline's digital-only owner's manuals and biodegradable yacht wash illustrate its extensive commitment to environmental protection.

History of Breakthroughs

As the Greenline 48 approaches the delivery of its 120th hull, it signifies the consistent accomplishments of Greenline Yachts. The yacht's ongoing success and popularity affirm its effective integration of ageless design and cutting-edge sustainability. Whether choosing the Coupe or Flybridge version, owners benefit from a vessel that not only meets their yachting desires but also aligns with their values of responsible and eco-conscious boating. 🌱



Millionaireasia[®]

ENTREPRENEURS' CLUB

www.millionaireasia.com



Term Membership

Unlock exclusive access to Millionaireasia private curated events with a 6-month Term Membership. Elevate your networking and business opportunities today.

Business Membership

Experience the epitome of luxury with a 1-year Business Membership, including a complimentary invitation for one Term membership with full benefits as well as privileged access to bi-monthly events.

Elite Membership

By invitation only, enjoy a 1-year Elite Membership featuring a Monthly Business Coaching Breakfast with Peter Tan or prominent millionaires (limited to 30 members from different industries and expertise).



+65 6838 5333



admin@millionaireasia.com

SIGN UP

Term & Business Membership - <https://www.millionaireasia.com/entrepreneur-club/millionaireasia-entrepreneur-club-application/>

Elite Membership - <https://www.millionaireasia.com/millionaireasia-entrepreneurs-club-elite-membership/>

DEMENTIA ARC CONFERENCE

AWARENESS
RESILIENCE
CARE



AWARENESS

Understand Dementia and its impact on individuals, your loved ones and the society

RESILIENCE

Take an AI-driven methodology test to discover your predictive MMSE Score (worth \$50)

CARE

Receive free consultancy for Lasting Power of Attorney (LPA)

Committed to mitigating dementia's impact, we offer proactive solutions through education, technology and health supplements via the Dementia ARC Conference to possibly delay cognitive decline. Join us to raise awareness, inspire resilience, and foster care on dementia. For more information and updates on such events, do follow us on our social media platforms.

Let's Connect

Phone

+65 6838 5333

Email

enquiry@lhwy.sg

Our Socials



INSTAGRAM



FACEBOOK



WEBSITE