



# Millionaireasia<sup>®</sup>

IT'S ABOUT LIVING LIFE TO THE FULLEST

SINGAPORE EDITION

## WORLD AWARENESS DAY

Exploring the future of  
consciousness, well-being,  
and human potential

## ROLLS-ROYCE ONE OF ONE

How individuality became  
the ultimate luxury

# LEE YEOW HENG

Singapore's Orchid Guardian Preserving Legacy



# Luxury in the Intelligence Era

by Toh Mu Qin

As we unveil the 75<sup>th</sup> issue of *Millionaireasia*, we find ourselves at a fascinating intersection where luxury is no longer defined solely by scarcity, exclusivity, or acquisition. The future of luxury is increasingly shaped by awareness, intelligence, and anticipation.

Today's ultra-high-net-worth individuals are seeking something far more valuable than access. They seek relevance. The ability to have experiences curated before a desire is articulated. The confidence of making decisions supported by insight rather than information overload. The privilege of living not merely well, but perceptively.

In this issue, we explore how predictive luxury is ushering in a new era of wealth and lifestyle. From AI-powered personalisation and digital identity vaults to virtual asset collections, smart estates, and next-generation mobility, the world's most innovative brands are expanding the possibilities of exceptional experiences. We also examine the future of private aviation, yachting, hospitality, health, and collectible investments, where technology and human understanding converge to create deeply personalised journeys.

Yet perhaps the most important luxury of all is awareness.

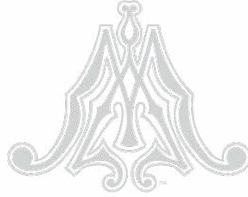
A special highlight of this issue is our post-event coverage of the inaugural World Awareness Day, held on 21 May 2026. Bringing together thought leaders, researchers, innovators, medical professionals, and wellness advocates, the landmark event explored the relationship between consciousness,

neuroscience, mental well-being, and human potential. In an era increasingly influenced by artificial intelligence and predictive technologies, the event served as a timely reminder that the future must remain centred on humanity. The ability to understand ourselves may prove to be the ultimate luxury in the years ahead.

This theme is echoed through our cover personality, Lee Yeow Heng, whose artistic journey reminds us that the future is shaped as much by awareness as it is by innovation. Best known for creating symbolic works that explore protection, memory, identity, and human emotion, Lee's work encourages deeper reflection in an increasingly fast-moving world. His story reflects a growing shift among today's influential figures, where success extends beyond personal accomplishment to encompass the ability to create meaning, inspire connection, and leave a legacy that resonates across generations.

Elsewhere in this issue, readers will discover the return of automotive elegance at Anantara Concorso Roma, the remarkable world of bespoke Rolls-Royce craftsmanship, the rise of digital identity as a new asset class, the future of experience-led hospitality and yachting, and extraordinary destinations ranging from Antarctica to Lake Como and beyond.

We invite you to look at luxury not simply as a symbol of status, but as a form of foresight. The future belongs not to those who possess the most, but to those who understand the most. 🏞️



# Millionaireasia®

© @millionaireasia.sg

millionaireasia.com

**Editor In Chief** Toh Mu Qin

**Editorial Contributors** Aja Ng  
Alexis Toh  
Chloe Pharamond  
Christina Yip  
Dr. Chrystal Fong Chern Ying  
Mariah Amin  
Priyanka Elhence  
Richard Siaw  
Wayne Tan

**Graphic Designer** Amelia Espaldon

**Partnering Law Firm** R S Solomon LLC

**Chief Executive Officer  
(Asia Pacific)** Peter Tan Shou Yi

**Publisher** Millionaireasia Pte Ltd  
111 Somerset Road, #07-07  
TripleOne Somerset  
Singapore 238164  
T: 65 6838 5333  
Email: [contact@millionaireasia.com](mailto:contact@millionaireasia.com)  
Website: <https://millionaireasia.com>

Printed in Singapore by Naili Print Media Pte Ltd

*Millionaireasia* is trademarked in 18 territories including Singapore, Malaysia, Indonesia, India, Vietnam, Cambodia, China, Hong Kong, Macau, Taiwan, Thailand, Japan, Philippines, South Korea, Australia, New Zealand, Russia and UK.

MILLIONAIREASIA IS PUBLISHED BY MILLIONAIREASIA PTE LTD (200714494D).

ALL RIGHTS RESERVED. TITLE AND TRADEMARK REGISTERED. NO PART OF THIS PUBLICATION MAY BE REPRODUCED IN ANY FORM WITHOUT THE WRITTEN CONSENT OF THE PUBLISHER. THE VIEWS AND OPINIONS EXPRESSED OR IMPLIED IN MILLIONAIREASIA ARE THOSE OF THE CONTRIBUTORS AND ADVERTISERS AND DO NOT NECESSARILY REFLECT THOSE OF THE PUBLISHER.

Millionaireasia®

# CONTENTS

SG75 | 2026

www.millionaireasia.com



14

6

## POST-EVENT REVIEW

- 6 When the World Paused
- 10 La Dolce Vita on Four Wheels  
– Rome's Grand Automotive Revival

14

## MOVERS AND SHAKERS

- 14 The Orchid That Became a Guardian
- 22 The Woman Who Plans Before the Storm
- 26 DC Restaurant by Darren Chin  
– Where Precision Meets Memory

# 28

## LIVING LARGE

- 28 Altitude: Skyline Aristocrats – Inside the World’s Most Expensive New Private Jets
- 32 Art: Scarlet Infinity – The Obsession Behind Kusama’s HK\$22.2 Million Pumpkin
- 34 Automotive: The New Alchemists of Luxury – Rolls-Royce Through Mechanical Legacy and Maritime Vision
- 38 Destination: Capella at Galaxy Macau Opens as the Pinnacle of Ultra-Luxury Hospitality
- 40 Destination: The Return of Lakeside Culture at Grand Hotel Tremezzo
- 42 Destination: Five-Star Hotels at Sea – All Aboard the Future of Private Travel
- 44 Destination: Villeggiatura by Train – Uniting Global Travel Legends via Rail
- 46 Destination: The Ultimate Frontier – Inside the Newly Reimagined White Desert Antarctica
- 48 Fashion: MaisonMargiela/folders – The Archive, Unfastened
- 50 Horology: Audemars Piguet Acquires Historic “Grosse Piece” at Auction
- 52 Tastes & Terroirs: Oceania Cruises Début La Table par Maîtres Cuisiniers de France – A Curated Expression of Haute Cuisine
- 54 Tastes & Terroirs: A Bespoke “Culinary Safari” at Noku Maldives, Vignette Collection
- 56 Tastes & Terroirs: A Garden Soirée of Flavour – Inside Olivier Elzer’s Latest Tasting Journey at Pink Pearl
- 78 Voyage: 40MXP MITAN – The Future of Luxury Lives at Sea

# 58

## IN THE KNOW

- 58 Digital Identity Vaults – The New Currency of Privacy
- 62 Experience-Led Yachting and Hospitality – The Age of Perceptive Escape
- 66 The Digital Gavel in the Lion City – How AI is Reshaping Legal Practice in Singapore
- 70 獅城数字法槌：人工智能如何重塑新加坡法律实践
- 74 The Future of Luxury – A Mindset Shift in Health

10



26



28



54



# When the World Paused

by Alexis Toh

## Monk Duke Leads the Inaugural World Awareness Day with a Powerful Reminder That True Awareness Begins Within



There are moments when an event feels less like a formal launch and more like the beginning of a larger cultural conversation. The inaugural World Awareness Day, held on 21 May 2026 at Great Eastern’s Hewton Fair Suite in Singapore, was one of those rare moments.

Presented by Millionaireasia in collaboration with Great Eastern Private, the morning session unfolded not as a conventional corporate gathering, but as an immersive exploration into mindfulness, mental clarity, and conscious living in an increasingly overwhelmed world. From the very beginning, the tone was set not by business or prestige, but by stillness.

At the heart of the session stood Monk Duke, whose presence transformed the ballroom into something unexpectedly intimate. Calm yet deeply engaging, he opened the morning with a reflection on the modern condition, one shaped not by scarcity, but by excess.

“People are not suffering because they have too little,” he shared. “They are suffering because they have too much.”



It was a statement that lingered heavily in the room.

In an era dominated by relentless notifications, constant stimulation, and the pressure to perform, Monk Duke spoke with unusual clarity about the silent exhaustion many professionals carry within themselves. Instead, they felt startlingly relevant to the realities of contemporary society, particularly among high-performing individuals who have achieved material success yet quietly struggle with stress, insomnia, emotional fatigue, and a growing sense of emptiness.

“The problem is mental,” he explained. “But most people are trying to fix it physically.”

Throughout his address, Monk Duke repeatedly returned to the idea that awareness is not merely a concept, but a practice. He described meditation not as an escape from reality, but as a method of returning to oneself. He distilled ancient wisdom into something remarkably accessible.

“Stopping is the key to success,” he said. “When the mind stops thinking and starts feeling, awareness begins.”

The simplicity of the phrase contrasted sharply against the complexity of modern living.

What made the session particularly engaging was Monk Duke’s ability to bridge ancient wisdom with present-day anxieties. His references to smartphones, workplace stress, social overwhelm, and emotional burnout resonated strongly with the audience gathered at Hewton Fair Suite that morning.

At one point, he described the human mind as “a little bird” endlessly flying from one thought to another without ever returning home to rest. The metaphor drew visible reflection across the room.

“The greatest journey wasn’t out there,” he later shared while recounting the story of an American entrepreneur who amassed wealth, travelled the world, yet ultimately discovered depression instead of fulfillment. “It was within.”

The emotional centrepiece of the morning came with the symbolic 21-minute guided meditation session, intentionally aligned with the date of 21 May. Before it began, guests were requested to completely switch off their phones, not merely silence them. The gesture itself felt increasingly radical in today’s environment.

For slightly more than twenty minutes, the ballroom fell into complete stillness.

Executives, entrepreneurs, international guests, and professionals sat quietly in collective silence as Monk Duke guided them through breathing, awareness, and what he described as returning “home” to the centre of the body. It was a rare pause from the velocity of modern life, one that many attendees later described as unexpectedly emotional and grounding.

The meditation session also reflected the broader intention behind World Awareness Day itself. Rather than functioning purely as a wellness initiative, the event sought to position awareness as a necessary human skill in an increasingly fragmented world.

Earlier in the morning, Millionaireasia CEO Peter Tan spoke about the growing need for greater social consciousness amid rising violence, stress, and emotional instability in society. Former Member of Parliament Lee Bee Wah echoed similar sentiments in her keynote address, emphasising that leadership today must extend beyond performance and strategy into “mindset, resilience, and our capacity to respond thoughtfully in times of uncertainty.”

Equally significant was the role played by Great Eastern, whose Hewton Fair Suite hosted the morning session. The elegant venue provided not only a sophisticated setting for the launch, but also symbolised a growing willingness among established institutions to participate in conversations surrounding mental wellness, awareness, and legacy beyond financial success.

The later half of the morning transitioned into a panel discussion featuring representatives from Great Eastern Private, Deloitte Private, and Lion Global Investors. While the discussion explored themes such as wellness, succession planning, wealth preservation, and legacy continuation, there remained an underlying thread that connected it back to Monk Duke’s earlier reflections: the question of what truly defines a meaningful life.

Rather than focusing solely on financial growth, the panel repeatedly returned to the importance of structure, responsibility, family continuity, and long-term purpose. In many ways, it became a practical continuation of the emotional and philosophical foundation established during the meditation session itself.



By the close of the morning programme, the atmosphere inside Hewton Fair Suite felt noticeably different from when the guests first arrived. Conversations had softened. Movements slowed. There was less urgency in the room.

World Awareness Day did not attempt to offer quick answers. Instead, its opening morning session offered something far rarer in today's climate: a moment of collective pause.

And perhaps that, more than anything else, was the true significance of the launch.

Because in a world increasingly consumed by noise, awareness may ultimately become the quietest form of power.

**Beyond Mindfulness Towards a Deeper Understanding of Human Awareness**

If the morning session of World Awareness Day invited participants to look inward through mindfulness and meditation, the afternoon programme expanded the conversation into the areas of consciousness, science, and human potential.

Held at the Singapore Institute of Advanced Medicine (SAM) Cancer Centre, the session brought together experts from diverse disciplines, including consciousness studies, neurotechnology, energy science, and preventive healthcare. Despite their different fields of expertise, each speaker explored a common theme, the transformative power of awareness.

Anisha Gilani opened the session with You Hold the Secret Code to Your Reality. Speaking about consciousness, perception, and personal responsibility, she challenged attendees to recognise that reality is not simply something that happens to us, but something we actively shape through our thoughts, beliefs, and awareness. Her message reinforced a central idea that had emerged throughout the day: meaningful change begins within.

The conversation then moved into neuroscience with Professor Sirawaj Itthipuripat's presentation, The State of Mind through Neurotechnology. Drawing upon advances in brain research, he explored how technology is enabling scientists to better understand attention, cognition, and mental states. While science may now measure aspects of the mind once considered intangible, his presentation highlighted an important truth: awareness remains one of humanity's most valuable capacities.

Dr. David continued the exploration with Forms, Fields, and Awakening: Exploring Qi and Consciousness. Bridging scientific inquiry with broader discussions surrounding energy and consciousness, he encouraged participants to remain curious about the unseen dimensions of human experience. His presentation invited guests to consider that not everything meaningful can be immediately observed or quantified.

The final presentation by Dr. Chrystal Fong, Diagnostic: The Journey to Quality Living, grounded the discussion in healthcare. Focusing on preventive medicine and early diagnosis, she highlighted the importance of becoming more aware of our bodies, health indicators, and lifestyle habits. Her message was clear: quality living begins long before illness appears.

The afternoon concluded with an exclusive tour of the SAM Cancer Centre, where guests were introduced to advanced medical technologies and patient-centred care practices.

What made the programme particularly meaningful was how every presentation connected back to the purpose of World Awareness Day. Whether through consciousness, neuroscience, healthcare, or human development, each speaker reinforced the same message: awareness influences how we think, how we heal, and how we live.





### Turning Awareness into Action Through the Science of the Mind

The final chapter of the inaugural World Awareness Day shifted the conversation from reflection to application. Held at Park Avenue Rochester, the evening programme introduced the EEG SMART Headset, an innovation designed to help individuals better understand, monitor, and manage their mental well-being through neuroscience and technology.

Presented by Chitpol Mungprom, founder of Brainspoke, the session explored how awareness, often regarded as an intangible experience, can be supported through measurable data and real-time feedback. More than a product unveiling, it was a conversation about the growing need for individuals to better understand their mental state before stress and burnout begin to affect their lives.

Drawing from his own entrepreneurial journey, Chitpol shared how years spent building successful businesses eventually led him to question what success truly meant. Despite achieving financial freedom, he found himself searching for a greater purpose.

“If we are good enough, what we do must deliver something beyond money,” he reflected. That search eventually led him towards mindfulness, meditation, and neuroscience, inspiring a mission to make the benefits of awareness accessible to a wider audience.

One of the evening’s most memorable ideas was the comparison between physical and mental health tracking. “You already have a mirror to see your body, but you don’t have a mirror to reflect your mind,” Chitpol explained while demonstrating the headset and its accompanying application.

Built around the philosophy of “free your mind, feel your life, and live well”, the EEG SMART Headset seeks to measure indicators such as stress, awareness, resilience, and cognitive patterns in real time. The goal is to help users identify mental and emotional patterns before they manifest as exhaustion, emotional distress, or burnout.

The discussion also highlighted a growing global mental health challenge. Rising levels of stress, anxiety, and burnout have become increasingly common across societies, particularly among younger generations and working professionals. A key message resonated throughout the evening, “before we can manage stress, we must first be able to detect it.”

That message aligned closely with the broader purpose of World Awareness Day. Whether through mindfulness, healthcare, neuroscience, or technology, awareness begins with recognising what is happening within ourselves.

More than a product launch, the evening reflected a growing movement towards treating mental well-being with the same importance as physical health. By bringing together mindfulness, neuroscience, artificial intelligence, and innovation, the launch of the EEG SMART Headset offered a powerful vision of how awareness can become a practical tool for living well. 🏆

There are cities that host automotive events, and then there is Rome, a city that absorbs them, refracts them through centuries of culture, and returns them with greater meaning. The inaugural Anantara Concorso Roma did not simply introduce another concours to the global calendar. It reinstated a narrative. One where machinery, memory, and mythology intersect beneath the Roman sky.

After a six-decade absence of a world-class concours in the Italian capital, its return felt less like a debut and more like a homecoming. Across four days in April, Rome became a living gallery of Italian automotive excellence, where over 70 meticulously preserved machines were presented not as static artefacts, but as dynamic embodiments of design, engineering, and identity.

### A City that Frames the Machine

Rome does not play a passive role. It shapes perception. Unlike the pristine lawns of Pebble Beach or the composed elegance of Villa d'Este, the Eternal City introduces a raw, layered dimension. At Casina Valadier and the elevated grounds of Villa Borghese, each car stood against centuries of architecture, art, and civilisation.

This relationship is essential. Italian automobiles have never been purely functional objects. They are cultural expressions, products of a nation where proportion is instinctive and design is inseparable from daily life. Set against Rome's skyline, these cars did not feel transported. They felt returned.

# La Dolce Vita on



The event traced a lineage that is distinctly Italian, one defined not by linear progression, but by emotional continuity. From pre-war coachbuilt silhouettes to modern hypercars, the DNA remained constant. Passion, precision, and a relentless pursuit of form.

### Sixteen Classes, One Philosophy

The structure of the concours was precise, yet its narrative unfolded fluidly. 16 classes charted nearly a century of Italian automotive history, each acting as a chapter within a cohesive whole.



Photos: Minor Hotels

# Four Wheels

Rome's Grand Automotive Revival

by Wayne Tan



The early entrants, anchored by icons such as the Alfa Romeo 6C 1750 and the formidable Maserati V4 Sport Zagato, captured an era when engineering ambition and craftsmanship were inseparable. These were machines shaped as much by human intuition as by technical calculation.

By the 1950s and 60s, the tone shifted. The rise of gran turismo introduced a new form of refinement. Cars such as the Ferrari 250 GT Berlinetta and the Maserati 3500 GT embodied long-distance capability wrapped in tailored elegance. Performance became composed rather than aggressive, deliberate rather than overt. The late 60s and early 70s introduced a different kind of energy. The arrival of the Lamborghini Miura marked a turning point, redefining performance through architecture and visual drama. Its low-slung stance and mid-engine layout rewrote the rules of proportion. Alongside it, the Maserati Ghibli SS presented a more restrained interpretation, long, assertive, and quietly commanding.

The progression culminated in the hypercar era. The Pagani Huayra Roadster BC stood as a contemporary expression of Italian ingenuity, where advanced materials and aerodynamics are applied with the same obsessive attention once reserved for aluminium and steel.

**Engineering Without Compromise**

In a field defined by rarity and pedigree, the highest honour was awarded to the Maserati V4 Sport Zagato. Known as the “Sedici Cilindri”, it represents a moment in automotive history when ambition operated without constraint.

Its 16-cylinder configuration, effectively two straight-eight engines unified into a single powerplant, was conceived not for efficiency, but for supremacy. In 1929, it set a world speed record over 10 kilometres, establishing its place as a technological outlier.

Its presence in Rome nearly a century later carried a resonance beyond performance. It was a return, geographical, historical, and symbolic. Few automobiles possess such continuity, and fewer still are able to complete that narrative arc.

The judging process, overseen by Adolfo Orsi, reflected the seriousness of the occasion. Authenticity, provenance, and restoration integrity were examined with exacting scrutiny. In this context, the Maserati’s victory was not only justified, but inevitable.

**An Immersive Expression of Italian Living**

What distinguishes Anantara Concorso Roma is its refusal to exist in isolation. It is not simply an exhibition, but an integrated experience that extends into the broader framework of Italian living.

Guests were based at the Anantara Palazzo Naiadi Rome Hotel, a property that mirrors the same balance between heritage and contemporary refinement seen in the cars themselves. From there, the programme unfolded across curated dinners, private viewings, and cultural explorations of the city.

Italian gastronomy played a central role. It was not treated as an accessory, but as a parallel discipline, another form of craftsmanship defined by detail, precision, and regional identity. Wines, coffee, and hospitality were orchestrated with the same level of care as the concours, reinforcing the idea that this was a complete expression of Italian excellence.

**The Economics of Collectibility**

Behind the visual spectacle lies a sophisticated ecosystem. The presence of UBS as presenting partner reflects the evolving role of classic cars within wealth strategy. Once driven purely by passion, these machines are now recognised as tangible assets with long-term value.





Supporting partners, including RM Sotheby's, reinforce this positioning. The concours serves not only as a platform for appreciation, but also as a nexus for transactions, acquisitions, and portfolio refinement.

This intersection of culture and capital has become central to high-end automotive collecting. Events such as this provide context, validation, and visibility, factors that increasingly influence value as much as provenance or rarity.

### Rome as Both Backdrop and Protagonist

What sets Anantara Concorso Roma apart is its understanding of place. Rome is not a neutral canvas. It is an active participant. Its history lends weight, its architecture provides scale, and its atmosphere introduces continuity.

The event achieved a rare balance between exclusivity and accessibility. Collectors, enthusiasts, and the public shared the same spaces, creating an environment that felt inclusive without dilution. It is a balance many concours struggle to achieve, yet here it appeared effortless.

The inclusion of philanthropic initiatives further expanded its impact. Contributions toward community projects demonstrated that events of this scale can extend beyond celebration into meaningful engagement.

### A New Reference Point

For a first edition, the level of execution was striking. The quality of entries, clarity of curation, and cohesion of experience suggested a maturity rarely seen at inception. This was not an experiment. It was a fully realised concept. The vision behind it, supported by leadership including William E. Heinecke, translated into a platform with immediate global relevance. Every detail, from logistics to hospitality, aligned with a clearly defined narrative.

What emerges is not just another event, but a new reference point, one that challenges established concours to reconsider their relationship with place, culture, and audience.

### The Road Forward

Looking ahead, Anantara Concorso Roma is positioned to become a permanent fixture on the international circuit. Its focus on Italian marques provides clarity, while its immersive approach ensures continued relevance.

Future editions will undoubtedly expand, introducing rarer entries, new classes, and broader programming, but the foundation remains intact. This is a concours that understands its purpose. Not merely to display cars, but to contextualise them within a cultural framework.

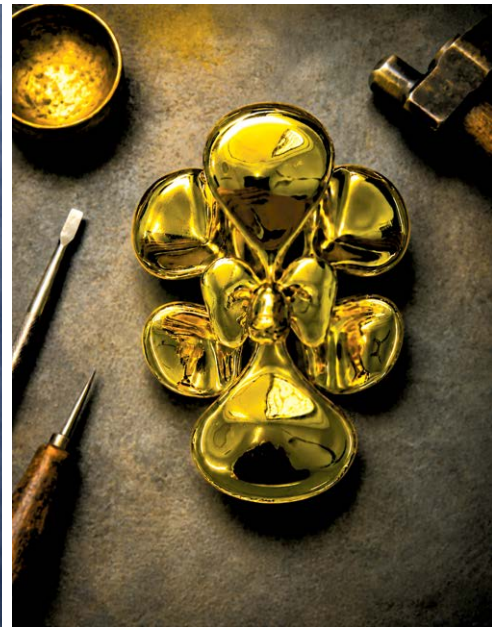
For collectors, it offers prestige. For enthusiasts, proximity. For Rome, it reinforces a narrative that extends beyond tourism, one rooted in cultural influence within the global luxury landscape.

In an era where the automotive conversation is increasingly shaped by electrification and digitalisation, events like Anantara Concorso Roma provide a necessary counterpoint. They remind us that the automobile, at its highest level, is not defined solely by performance metrics or technological advancement.

It is an object of purpose. A reflection of its time. A vessel for ideas.

In Rome, these ideas were given space, set against a city that understands legacy better than most. The result was not simply a successful event, but a statement. One that positions Anantara Concorso Roma not as a newcomer, but as a presence with lasting influence. 🏛️





# The Orchid That Became a Guardian

Through JOAQUIM™, Lee Yeow Heng transforms Singapore's national flower into a contemporary symbol of protection, grief, resilience and emotional shelter.

by Toh Mu Qin

There are artists who create objects to be admired, and there are artists who create objects that seem to look back at us.

Lee Yeow Heng belongs unmistakably to the latter.

At first encounter, his newest creation, JOAQUIM™, appears to be an elegant interpretation of Singapore's national orchid. The form is instantly recognisable yet subtly transformed, familiar enough to draw the eye, abstract enough to hold it. Its petals open with grace. Its silhouette feels botanical, sculptural and protective. There is softness in its curve, yet also a sense of inner strength, as though the work is not simply blooming, but sheltering something unseen.

Look longer, and the orchid begins to reveal another presence. Hidden within its form is the suggestion of an angel, a gentle apparition embedded within the composition. It does not announce itself loudly. It waits. It asks the viewer to slow down, look again, and allow the artwork to unfold beyond surface beauty.

That act of looking again may well be the key to understanding Lee's practice.

For decades, Lee has moved across advertising, animation, comics, branding, character design, collectible art toys, fine art, teaching and community-based creative work. Yet beneath the breadth of his mediums lies a singular concern: how art can speak to people emotionally before it speaks intellectually.

His work is not coldly conceptual. It does not hide behind theory. Even when it enters the territory of contemporary sculpture and collectible design, it remains deeply human. In Lee's world, a form is never only a form. A character is never merely a character. A flower is never just a flower.

JOAQUIM™ is perhaps his most personal creation to date. It is not only a design object, nor simply a national symbol given contemporary treatment. It is an emotional architecture, built from grief, memory, care, fatigue, survival and hope. It is the work of an artist who has lived long enough to understand that beauty, when stripped of emotional truth, becomes decoration. But beauty carrying pain, love and protection becomes something far more powerful.

It becomes refuge.

### A Childhood Without Paper

To understand JOAQUIM™, one must first understand the childhood that shaped Lee's relationship with creativity.

He grew up in a large family of nine brothers and one sister. His father passed away when Lee was still in kindergarten. His mother, suddenly carrying the weight of raising a large family alone, had little time to spare. For a child left largely to entertain himself, imagination became not a pastime, but a form of survival.

There were no proper art materials at home. Paper, crayons and colour pencils were luxuries. So Lee drew with whatever the world offered him. Branches became pencils. Sand became a sketchpad. Chalk turned walls and floors into early canvases. Long before he entered any formal creative industry, he was already making marks, testing surfaces and discovering that expression did not require permission.

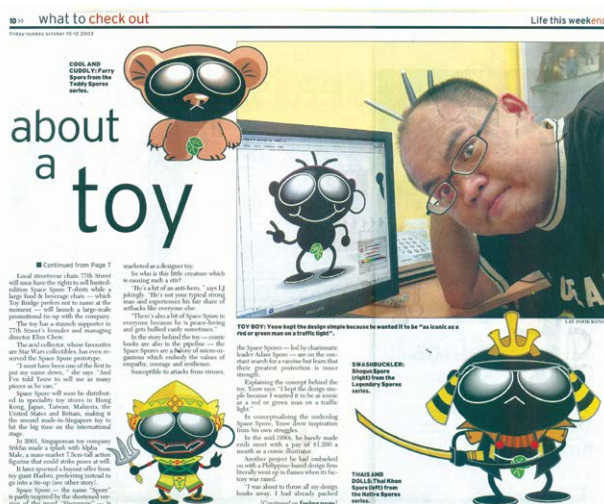
Many artists remember their first brush or first sketchbook. Lee remembers the absence of such things. Yet absence, for him, did not become deprivation. It became invention.

As a child, he also picked up discarded toys from the garbage. They were dirty, broken and often incomplete. He washed them, repaired them and reassembled them in his own way. In retrospect, those broken toys now seem prophetic. They were his first sculptures, his first lessons in

restoration, his first contact with the idea that what society throws away may still contain emotional and creative value.

This is an important key to Lee's visual world. His art often carries a childlike accessibility, but beneath that surface is a philosophy of repair. He is drawn to forms that comfort, amuse, protect or restore. He understands the emotional life of objects because, as a child, objects were not disposable amusements. They were companions. They were possibilities.

This combination of scarcity, imagination and social consciousness formed the earliest foundation of his artistic identity. He did not begin by asking, "How can I become an artist?" He began by asking, "How can I make something out of what I have?" That question still echoes through his practice today.



### The Artist as Communicator

Lee's professional journey did not unfold within a single artistic lane. Instead, it moved through many visual economies.

In his younger years, he did not think about creating fine art in the romantic sense. Survival came first. He focused on finding work where his skills could earn him a living. Commercial creativity became his training ground. He worked hard, produced relentlessly and believed that a "hungry artist" would eventually be rewarded.

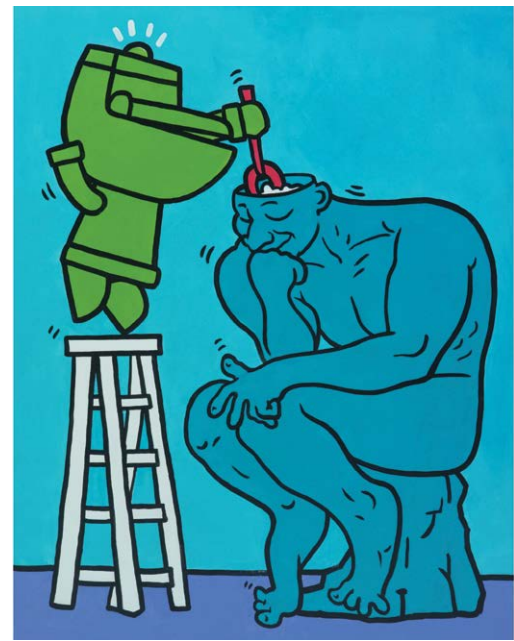
That hunger took him into advertising, animation, branding and character design, fields that demand not only imagination, but clarity. Unlike solitary studio practice, commercial work requires communication under pressure. A visual must speak quickly. A character must be legible. A concept must land. A story must be translated into form, movement, tone and memory.

For Lee, each discipline became a different medium of communication. Writing, music, dance, movement and visual art all share the same deeper purpose: to deliver a message. Art, to him, is a bridge. It connects people. It reflects society, emotion and human behaviour. It also invites reflection on issues that are worth discussing.

His involvement in Singapore's 1997 National Day Parade mascot animation project marked one of the early defining moments of his career. His work was selected despite competition from larger companies. Standing among hundreds of thousands of people as the animation appeared on the big screen, knowing that the goodie bags carried comic books and character designs he had created, he felt the pride of seeing his imagination enter national consciousness.

Storyboarding sharpened his understanding of narrative structure. Every frame had to carry intention. Every sequence had to support the viewer's belief in the world being created. This training matters. It taught Lee that imagination cannot remain vague if it wishes to communicate. It must be structured. It must be translated.





It must find form.

In JOAQUIM™, this discipline is visible. The work may feel soft and poetic, but its composition is intentional. Its national reference, floral identity and hidden angelic presence are visual decisions shaped by decades of experience in making images speak.

**Before the World Discovered Art Toys**

Long before collectible art toys became a dominant cultural force across Asia, Lee was already exploring character-driven creations such as SpaceSpore and KINGTANK.

Lee sensed this world early.

He attributes it to “artist instinct”, a kind of creative sensitivity similar to the way experienced businessmen can sense what may become popular in the market. His attraction to designer toys was rooted in character creation. He enjoys giving a form its own personality, emotion and visual identity.

SpaceSpore emerged during the SARS outbreak, a period of fear and uncertainty. Inspired by microscopic organisms invisible to the human eye, it became a “small hero” character, a reminder that survival often depends on adaptation. Even in harsh situations, human beings endure, mutate, respond and continue.

KINGTANK took a different emotional route. With its oversized toilet bowl head and childlike body, it provokes

laughter at first glance. But the humour is not superficial. Behind its absurdity is a study of emotional blockage, modern stress and the invisible pressures people carry. Lee created it after hearing stories from friends, neighbours and colleagues about the struggles they faced just to survive. The character’s comic presence became a way to soften difficult truths.

This is Lee’s gift: he understands that humour can make pain approachable. His work does not confront viewers with suffering in a severe or alienating way. Instead, it uses exaggeration, innocence and visual play to open a doorway. People laugh, then think. They smile, then recognise themselves.

His characters may be playful, but they are not empty. They are emotional surrogates. They hold what people struggle to say.

**From Hero DNA to HALOART**

Lee often speaks of having “Hero DNA” within him, a phrase that might sound humorous at first, but actually reveals much about his artistic psychology.

The hero in his work is rarely grand in the conventional sense. It is not necessarily muscular, triumphant or spectacular. More often, it appears as a small protective force, a figure of comfort, a strange but lovable form that helps people feel less alone.

This instinct later found another expression in HALOART Studio, his educational and community-oriented platform.

Through teaching, he has worked with beginners, adults, seniors and individuals with special needs. These encounters have profoundly shaped his understanding of art's social role. His students have taught him resilience, confidence and the importance of finding joy in what one does. He has seen students grow independent, discover the happiness of painting, win awards, sell their artworks and return to his classes after years away.

For Lee, art education is not only about outcome. It is about process. It is about relaxation, mistakes, confidence and emotional release. He often reminds students that mistakes can become part of beauty. This is a generous way of seeing art, and perhaps an even more generous way of seeing life.

In a society where achievement is often measured by polish, perfection and productivity, Lee's classroom offers a different proposition. It tells people that expression does not need to be flawless to be meaningful. It tells them that painting can be a way of speaking when words fail. It tells them that art can become a safe place for grief, memory and restoration.

Such experiences reinforced his belief that art can be therapeutic. It may not erase wounds, but it gives them form. It allows feelings to move from the private interior into visible space. In doing so, pain becomes less abstract, less lonely.

This philosophy becomes central to JOAQUIM™.

### **The Orchid as Emotional Shelter**

The choice of the orchid was not incidental.

In Singapore, the orchid already carries symbolic weight. It is associated with national identity, elegance, resilience

and tropical beauty. Yet Lee's JOAQUIM™ does not simply reproduce the orchid as emblem. It positions it as a contemporary visual icon for emotional protection.

To Lee, a strong artwork should first capture attention, then encourage deeper contemplation. The orchid is naturally attractive. Its petals draw the eye. In nature, flowers use beauty to invite attention. Lee adopts this same principle, allowing JOAQUIM™ to seduce visually before revealing its emotional architecture.

This is what makes the work compelling. It begins with beauty, but does not end there.

JOAQUIM™ speaks to a world saturated with distraction, pressure and uncertainty. Lee recognises that people today live amid too much noise: social media noise, school pressure, work stress, family expectations and the constant demand to perform. Although he does not believe people have completely forgotten how to pause, he sees how easily they become attached to this surrounding noise.

JOAQUIM™ responds not by shouting louder, but by quieting the field. It is, in essence, a sculptural pause.

The orchid form becomes a vessel of emotional shelter. Its petals suggest enclosure without confinement. Its hidden angel suggests protection without sentimentality. Its national identity grounds it in Singapore, while its themes of loss, resilience and hope allow it to travel beyond geography.

The work emerged from personal grief. Lee's mother's passing left him deeply affected, and around 2011 he experienced depression. Between 2022 and 2024, three of his siblings also passed away. The accumulation of loss left him searching for answers about life, death and why people leave. He lost motivation and struggled emotionally.

Later, his work in healthcare as an assistant therapy staff member opened another chapter of understanding. He listened to hospital patients, many of them elderly, and their stories reminded him of his mother. He came to understand sadness, suffering and loss not as personal failures, but as part of being human.

This is the emotional soil from which JOAQUIM™ grows.

It is not a decorative orchid. It is an orchid that has known mourning. It is not simply a national flower. It is a flower carrying the quiet knowledge of impermanence.

Lee hopes people will see in JOAQUIM™ a reminder that we are like flowers. We are born, we age, we experience sickness, joy, anger, sadness and death. Life is cyclical. Beauty is temporary. Yet within that temporariness lies meaning.



His message is disarmingly simple: be happy, do not worry. In another artist's hands, such a phrase might feel naive. In Lee's, it does not. It comes from someone who has lived through grief, depression, fatigue and reinvention. It is not the denial of pain. It is the decision not to surrender entirely to it.

**A Singaporean Visual Language**

One of the most interesting aspects of Lee's practice is how Singaporean it feels without being narrowly nationalistic.

His work is shaped by local history, childhood scarcity, public culture, community memory, healthcare encounters, education, ageing populations and the emotional pressures of contemporary urban life. Yet he does not translate these themes through heavy-handed symbols. Instead, he builds characters and forms that can move easily between cultures.

This is especially important for JOAQUIM™. While rooted in Singapore's national orchid, it has the potential to become a global symbol because its emotional premise is universal. Everyone understands the need for shelter. Everyone experiences loss. Everyone, at some point, searches for reassurance.

In contemporary art discourse, JOAQUIM™ can be read as a biomorphic emblem, a work that fuses botanical reference with anthropomorphic suggestion. It participates in the language of soft sculpture and symbolic abstraction, while retaining the accessibility of character design. It is not purely fine art, not merely collectible design, not only national iconography. It occupies a hybrid space.

That hybridity is Lee's strength.

This breadth allows JOAQUIM™ to avoid becoming an inaccessible art object. It is sophisticated, but not aloof. It has conceptual depth, but does not require the viewer to hold an art history degree in order to feel something.

That, perhaps, is Lee's most important position as an artist. He does not make art to exclude. He makes art to gather.

**The Mature Artist's Bloom**

There is a particular power in artists who arrive at a new creation after decades of making, failing, teaching, observing and grieving.

JOAQUIM™ is not the work of a young artist trying to impress the world with visual cleverness. It is the work of a mature artist returning to essentials: protection, comfort, hope, memory, beauty and care.

There is confidence in its simplicity. Lee has long valued originality, authenticity, uniqueness and simplicity in his creations. He often avoids over-researching at the

beginning of his process because he wants to protect the originality of an idea before outside references begin to interfere. He sketches, experiments and asks himself whether something has already been done, and how he can make it more unique.

This instinctive approach gives his work a certain freshness. It does not feel overburdened by theory. It feels discovered.

At the same time, JOAQUIM™ contains the refinement of a lifetime spent understanding visual communication. Its impact depends on balance, between recognisability and abstraction, beauty and sorrow, national identity and personal mythology, floral softness and angelic protection.

Lee offers a different model of success. His story is not about wealth as accumulation, but wealth as emotional contribution. His capital is not only creative talent, but empathy. His legacy is not built solely on what he has produced, but on whom he has helped, taught, comforted and inspired.

In a luxury landscape often dominated by rarity, spectacle and acquisition, Lee reminds us of another form of value: the value of being emotionally moved.





### Art as Care

He believes people are silently craving support. In his classes, he talks to students about work, school and life. These exchanges create warmth and connection. They remind him that learning art is not only about developing skill, but about building human contact.

This may be why JOAQUIM™ feels especially relevant now.

The work is not a solution to grief, loneliness or pressure. Art rarely solves life in such literal terms. What it can do is create a symbolic container. It can offer a place to rest one's emotions. It can make the invisible visible. It can remind us that we are not alone in what we carry.

JOAQUIM™ does this through tenderness. It does not dramatise pain. It does not perform suffering. Instead, it offers shelter through form. It turns the orchid into a guardian, the flower into a companion, the sculpture into a quiet witness.

Lee has spent much of his life creating characters that help people smile, pause or feel less alone. From SpaceSpore to KINGTANK to JOAQUIM™, his works are connected by a belief that art should respond to human emotion. Some do so through humour. Some through strangeness. JOAQUIM™ does so through grace.

It is his most lyrical creation because it carries the greatest emotional weight.

### A Life Drawn Toward Light

As an artist, Lee Yeow Heng resists easy categorisation.

He is a commercial creative who entered national memory through animation. He is a character designer who anticipated the emotional power of collectible art toys before they became mainstream. He is an educator who believes painting can help people heal. He is a community builder who sees art as a bridge. He is also a man who has known loss closely enough to understand why comfort matters.

His story is not simply about artistic achievement. It is about the translation of personal history into public meaning. It is about how a child who once drew with branches in sand now creates symbolic forms that invite others to feel protected. It is about how broken toys, national parades, sci-fi animation, hospital conversations, grieving families, students, seniors and orchids all converge into one artistic life.

Most importantly, it is about the courage to make gentle work in a hard world.

Gentleness is often underestimated. In art, as in life, we tend to mistake force for strength. But JOAQUIM™ suggests another possibility. It proposes that softness can protect. Beauty can hold sorrow. A flower can become armour. An angel can hide inside a petal. A sculpture can whisper what people most need to hear.

Lee hopes that when people encounter his work years from now, they will understand that happiness, sadness, anger and all emotions are natural parts of life. He hopes they will learn not to hold on too tightly to everything, to relax and appreciate the present moment.

It is a lesson he is still learning himself.

Perhaps that is why the work feels honest. JOAQUIM™ does not speak from a place of completion. It speaks from the ongoing human condition. It is not the flower of someone who has conquered grief, but of someone who has learned to live beside it.

In that sense, JOAQUIM™ is not only Lee Yeow Heng's newest creation. It is his offering.

A flower for the grieving. A guardian for the overwhelmed. A national orchid reborn as emotional sanctuary. A quiet reminder that even after loss, something within us still turns toward the light. 🌸

A woman with dark hair pulled back, wearing a white blazer over a black top and white trousers, sits on a wooden chair with a woven seat. She is smiling and looking towards the camera. She is wearing a gold watch and a silver bracelet on her left wrist. Her legs are crossed at the ankles, and she is wearing black high-heeled shoes with gold buckles.

# The Woman Who Plans Before the Storm

Wang Yeok Hong approaches financial advisory through preparedness, perspective, and presence when life changes without warning.

by Toh Mu Qin

There are financial advisors who speak in numbers, policies, portfolios, and projections. Then there are those who understand that behind every financial decision sits something far more fragile: a family, a fear, a responsibility, a dream, or a life event no one saw coming.

For Wang Yeok Hong, better known to many as Anna, wealth planning has never been just about accumulation. It is about readiness. It is about making sure that when life turns urgent, people are not left scrambling for answers.

This conviction became deeply personal when her mother was diagnosed with ovarian cancer when Anna was 34. Until then, success had been something she pursued with discipline and clarity. She had always been independent, curious, and self-directed. As a child, she was often entrusted with leadership roles such as prefect and class monitor, experiences that taught her accountability from a young age. Growing up in a stable family with parents who were business owners, she learnt that money was not everything, but it could provide options and the ability to solve problems.

Her mother's illness gave that belief its full weight.

Because of the career and resources she had built, Anna was able to support her mother through treatment, provide access to quality medical care, and ease the financial burden on her siblings. In that season, money was no longer abstract. It became time, dignity, choice, and the freedom to be emotionally present.

“That experience reinforced an important life lesson for me: before a crisis happens, we must prepare ourselves,” she reflects. “We work hard and build our resources not only for ourselves, but so that when our family needs us, we are ready to support them in every possible way.”

It is this philosophy that makes Anna's story stand apart in Singapore's crowded financial advisory landscape. In an industry often associated with products, targets, and transactions, she speaks of preparedness as an act of love. Planning, in her world, is not simply about protecting assets. It is about protecting people from avoidable helplessness.

Anna entered the financial advisory industry in 2005, immediately after graduating from university, joining

Prudential Singapore as her first career. At the beginning, she was drawn to numbers, planning, and the way financial decisions could shape a person's future. But the longer she worked with clients, the clearer it became that financial planning was never only about finance.

Every decision carried a human story: a parent worrying about children, a business owner thinking about continuity, a family preparing for medical uncertainty, a young professional building security.

“Every financial decision is ultimately connected to someone's dreams, family, fears, and aspirations,” she says.

Over time, the work became more than a career. It became a mission of standing beside people at meaningful and difficult turning points. Today, Anna leads an agency of more than 40 consultants, including managers, experienced advisors, fresh graduates, and mid-career professionals who entered the industry as a second career. She is not only advising clients. She is developing advisors, nurturing leaders, and building a platform through which more families can be supported with integrity and care.

To Anna, the strength of a financial advisor is not limited to technical skill. It lies in character, consistency, emotional intelligence, and the ability to remain clear when others are overwhelmed. Her philosophy is simple: be present when clients need you most.

In a climate where scepticism towards financial advisors remains common, Anna understands that trust must be earned over time. One of the biggest misconceptions, she says, is that advisors are primarily focused on selling products or earning commissions. While products form part of the solutions, they should never be the starting point.

“The starting point should always be understanding a person's goals, responsibilities, concerns, and aspirations,” she explains. “A good financial advisor is not a salesperson. They are a planner, strategist, educator, and long-term partner.”

For Anna, listening comes before strategy. Context comes before recommendation. The client is never fitted into a standard solution. Instead, every plan must reflect the individual's responsibilities, vulnerabilities, priorities, and life stage.

Her approach is also shaped by the belief that modern financial advisory must extend far beyond product knowledge. After more than two decades in the industry, Anna has built an ecosystem of trusted relationships across medicine, law, accounting, mortgages, property, business succession, and wealth strategy. This network has become one of her strongest differentiators.

Today, clients rarely need advice in isolation. A medical emergency may require hospital guidance, while a business owner may need succession planning. The advisor who can connect people to the right support becomes far more than a product intermediary.

Anna works closely with a medical concierge network that operates around the clock. When a client faces an unexpected hospital admission, even in the middle of the night, guidance can be given on suitable hospitals, admission procedures, coverage, and claims. Support continues throughout the hospital stay and recovery journey.

This is where her value becomes deeply human. Her work is not only about preparing documents or recommending solutions. It is about ensuring that when clients are vulnerable, they do not feel alone.

“Trust means clients know they will never have to navigate life’s major decisions alone,” she says.

One case that left a lasting impression involved a client diagnosed with pancreatic cancer. Because planning had been done years earlier, the claims process could be facilitated efficiently, allowing the client to focus on treatment and recovery rather than the financial anxiety of illness.

“Wealth is not only about accumulation,” she says. “It is about creating options, preserving dignity, and providing peace of mind when people need it most.”

Her definition of wealth has evolved significantly. In her younger days, wealth was measured more by income and financial achievement. Today, she sees it as freedom, impact, and the ability to create opportunities for others. It is also about building sustainable wealth through investments and multiple income streams, so that money can work beyond active labour.

This perspective is especially relevant in Singapore, where financial confidence can sometimes be mistaken for financial readiness. Anna observes that one common

blind spot is the assumption that having some savings, insurance, or investments means one is fully prepared. In reality, planning must evolve as life changes.

Another blind spot is over-reliance on a single source of income. In a fast-changing world, resilience often requires diversification, whether through investments, businesses, intellectual capital, or alternative income streams. She also sees how fear can make people overly conservative. While prudence matters, excessive caution may quietly limit growth.

Technology and artificial intelligence add another layer to this changing landscape. For Anna, staying relevant means helping clients understand not only today’s risks, but tomorrow’s possibilities. Financial advisory cannot remain static. It must move with the world.

Yet Anna’s personal compass remains grounded in humility. One principle she lives by is “Stay hungry, stay foolish.” To her, success should never create complacency. There is always more to learn, more room to grow, and better people to learn from. Adulthood has also taught her that security is not merely financial. It is relational, found in trusted mentors, strong support systems, and people one can count on during difficult seasons.

Outside work, Anna finds joy in simple moments: meals with her husband, travels with teammates and close friends, and memories with people she cares about. These remind her that professional success is only one part of a meaningful life.

If her life story had a theme, Anna would call it “#ANNAMazingJourney“. Behind the light-hearted phrase is a philosophy of resilience. She believes in learning how to dance in the rain rather than waiting for the storm to pass. It is a fitting metaphor for a woman whose life and work are built around readiness, courage, and forward motion.

Beyond her profession, Anna hopes to leave a legacy of resilience, courage, and self-belief, especially for women. She wants women to recognise that they are capable of achieving more than they imagine, and that they should stand up for themselves, invest in their growth, and pursue their dreams with confidence.

“As women, we often wear many hats throughout our lives: daughter, wife, mother, professional, caregiver, and leader,” she says. “Yet amidst all these responsibilities, it is equally important to remember to value and care for ourselves.”

*“Wealth is not only about accumulation, it is about creating options, preserving dignity, and providing peace of mind when people need it most.”*

- Yeok Hong

In a saturated industry where many advisors may offer similar products, Anna’s difference lies in what cannot be replicated. Products can be similar. Networks, experience, judgement, relationships, and trust built over decades cannot be copied overnight.

Her clients gain more than financial solutions. They gain access to an ecosystem. They gain the assurance of someone who has walked through real crises, supported families through difficult diagnoses, guided clients through succession concerns, and built a team capable of bringing broader perspectives to the table.

This is what makes Wang Yeok Hong compelling. She is not trying to be the loudest voice in the room. She is building a practice rooted in preparedness, a leadership culture anchored by service, and a legacy measured by the number of people strengthened through her work.

A résumé can list years of experience and milestones. What it cannot capture is the heart behind the work: the conviction that success becomes meaningful only when it allows us to protect, uplift, and stand beside others.

Her story is not about planning for wealth alone. It is about planning for life before life asks its hardest questions.

And when those questions arrive, Anna wants her clients to know they will not have to answer them alone. 🙏

*Disclaimer:* The content provided in this article is intended for informational purposes only. It is not intended to be, nor should it be interpreted as, financial advice, insurance advice, or a recommendation to purchase any product. Readers should not rely solely on the content presented here, and should always seek personalised guidance from their own trusted financial adviser or licensed insurance professional.



There is a quiet confidence to DC Restaurant by Darren Chin, a sense that nothing needs to be overstated. Tucked within the suburban enclave of Taman Tun Dr Ismail, the one-Michelin-star establishment reveals itself not through grandeur, but through steady, measured intent. Here, every detail, every plate, every pause in service feels deliberate and well-articulated.

At the centre of it all is Chef Darren Chin, whose journey is defined by memory, perspective and methodical craft refined in some of France’s most demanding kitchens. A classically trained alumnus of Le Cordon Bleu Paris and a recipient of the Chevalier de l’Ordre du Mérite Agricole by the French Republic in 2025, Darren’s foundation is anchored in the rigours of French gastronomy. Yet, what emerges at DC today is something far more nuanced. It is neither traditional French cuisine nor is it Asian in the conventional sense.

It is a language of its own.

**The Evolution**

In the early years, DC Restaurant spoke in the vocabulary of classical French technique – sauces built with precision, proteins executed with discipline and compositions reflecting the elegance of European fine dining. But as time passed, Darren’s perspective began to expand and shift. The question was no longer how well he could execute tradition, but how truthfully he could express himself through it.

That search for answers has always been led by travel and exploration. Journeys through gastronomic capitals such as San Sebastián, Sicily and Paris provide contemporary relevance and a closer look through the lens of food-culture diversity, but it is his connection to his second home in Northern Thailand that unlocked an innate creative vein and inspired deeper rumination.

# DC Restaurant by Darren Chin

# Where Precision Meets Memory

by Aja Ng and Chloe Pharamond

Photos: DC Restaurant





Reflection born in the hills of Doi Saket, Chiang Mai, became a recurring point of reference. There, he encountered his teacher, Hanuman Aspler, who inspired him to look beyond the technical and toward the intuitive. Lanna cuisine, deeply rooted in the land, began to influence his understanding, weaving elements of fermentation, indigenous herbs, smoke and an inherent sense of balance, a subtle thread of which now runs through the tapestry of DC's menus.

### Texture & Tactility

A dish at DC unfolds slowly, coming into clarity. A cured, line-caught local fish carries the quiet, lifting acidity of lacto-fermented fruit, lingering just enough to bring balance without being overpowering; fresh herbs from nearby farms lift the plate; smoke grounds it; and each component exists in deliberate tension with the next.

Darren often describes this as tactility – texture on the palate. It is not just about flavour, but about how a dish moves and evolves in the mouth. The mouthfeel is intimate; a sensation that resonates and ultimately stays with you.

This vision is best expressed through his commitment to provenance and balance. As an avid fisherman, Darren often brings his own catches from the Malaysian waters back into his kitchen, bridging the gap between the sea and the plate. But beyond that, whether it is Malaysian seafood or produce grown by specialised farmers, the ingredients are never forced to dominate, rather, they integrate. What remains is their essence, shaped through technique and intention.

### The Luxury of Restraint

In an era of culinary involution, where complexity often masks a lack of soul, DC offers a different trajectory. There is a quiet confidence and luxury in restraint, a belief that complexity need not be excessive.

The tasting menu at DC reflects this. It is fluid, ever-evolving, deeply personal, and honest.

This extends beyond the kitchen into the dining room. Service is precise yet intuitive, paced with a sensitivity that allows the experience to breathe. There is no rush, no intrusion, only a seamless flow that guides the guest through each moment.

It is this harmony between kitchen and floor, between discipline and emotion, that defines DC Restaurant. The Michelin star it holds is not simply an accolade, but a reflection of consistency and conviction.

This is the approach that Chef Darren continues to refine, to question, to evolve and share. DC's recently introduced à la carte menu opens the door to more guests, while future collaborations and concepts, more intimate in scale and more focused in narrative, aim to deepen the connection between food, wine, experience and of course, people.

In these, the hope is to allow space for conversations that begin with the ingredient, pass through the hands of the chefs, and find meaning in the experience of the guest.

And at DC Restaurant, that conversation is ongoing, quietly unfolding, one layer at a time.

Beyond DC Restaurant, Darren's culinary world expands into parallel expressions. Bref offers a more relaxed, bistro-style interpretation of his craft, while Gai explores the depth and diversity of Northern Thai flavours. Each concept reveals a different facet of his identity, yet all remain connected by a shared philosophy. 🌿

### About The Writers



Kuala Lumpur based Aja Ng writes about food and travel, and has worked in multiple facets of the hospitality industry for the past 25 years. She's a panellist and tastemaker for regional and global hotel and restaurant awards, and is also passionate about environmental conservation and loves getting her hands dirty at the family's organic vegetable farm.



Kuala Lumpur-based Chloe Pharamond has a knack for stringing words together. With ten years across the hospitality industry, her writing is curious, a little absurd and always honest. Her rule is simple: if she doesn't believe in it, she won't write it.



# Skyline Aristocrats

## Inside the World's Most Expensive New Private Jets

by Wayne Tan

In the top stratum of aviation where advanced engineering meets uncompromising luxury, private aviation has entered a new epoch, one defined not merely by range or speed, but by how seamlessly aircraft integrate performance, wellness, and bespoke living at 45,000 feet. The latest generation of flagship business jets no longer compete solely on distance charts. They contend in aspects of cabin philosophy, aerodynamic refinement, and technological orchestration. Leading this evolution are three aircraft that have quietly redrawn the boundaries of possibility: the Bombardier Global 8000, the Gulfstream G700, and the Dassault Falcon 10X. Each is a masterstroke in its own right, distinct in character, yet united in ambition.

### Bombardier Global 8000

There is a certain audacity in chasing speed in an era preoccupied with sustainability and restraint. Yet the Bombardier Global 8000 does not simply chase. It reclaims. With a top-end velocity brushing Mach 0.95, it stands as the swiftest civilian aircraft since the twilight of the Concorde, reintroducing urgency into long-haul private travel without sacrificing composure. It is not speed for spectacle, but speed with purpose, shortening the distance between continents in a way that feels both decisive and deliberate.

But speed, as Bombardier understands, is only meaningful when paired with endurance. The aircraft's intercontinental reach stretches to 8,000 nautical miles, enabling direct city pairings that previously demanded compromises. Singapore to Los Angeles, Dubai to Houston, these are no longer logistical challenges but routine itineraries. For the modern global executive, where time is the only truly finite currency, this capability transforms travel from a necessity into an advantage. It is aviation that bends geography to will, collapsing distances and compressing schedules without eroding comfort.

Yet the true revelation unfolds once inside. The Global 8000's cabin is not designed solely for comfort. It is engineered for physiological harmony. At cruising altitudes where commercial cabins would impose fatigue, Bombardier has reduced cabin altitude to one of the lowest in its class, significantly easing the body's burden. Combined with advanced air filtration and a steady influx of fresh air, the environment feels noticeably lighter, more breathable. It is an invisible luxury, one that reveals itself not in-flight, but upon arrival, when passengers step off with clarity intact and fatigue held at bay.



Photos: Bombardier, Gulfstream Aerospace Corporation and Dassault Aviation

The architecture of the cabin is equally deliberate. Four distinct living zones allow for a choreography of experiences: a conference suite that encourages decisive deal-making, a lounge that dissolves into leisure, a private retreat for uninterrupted rest, and a dedicated space for rejuvenation. The transitions between these zones are fluid, almost residential in character, echoing the sensibilities of a well-appointed penthouse rather than an aircraft fuselage. Materials are curated with precision, fine leathers, polished veneers, and subtle ambient lighting working in quiet harmony to create an environment that feels both elevated and personal.

Technically, the jet is no less impressive. Its advanced wing design, featuring sophisticated leading-edge devices, delivers not only aerodynamic efficiency but also exceptional runway performance. The aircraft can access a broader range of airports than others in its category, including those with shorter runways or more challenging operating conditions. For owners, this translates into greater flexibility and discretion, arriving closer to final destinations, bypassing congested hubs, and reducing total travel time in ways that extend beyond the airborne segment.



The Global 8000 is, ultimately, an aircraft of contrasts. It is fast, yet composed; expansive, yet intimate; technologically advanced, yet instinctively human-centric. It does not force passengers to choose between performance and comfort. Instead, it brings the two into perfect alignment, where neither is compromised. In setting a new standard for what it means to travel well at speed, Bombardier has created not just a flagship, but a defining benchmark for the next generation of private aviation.



### Gulfstream G700

If the Global 8000 is an ode to velocity, the Gulfstream G700 is a meditation on space. It does not seek to outpace the skies through speed alone. Instead, it refines how they are inhabited, offering an environment that feels composed, expansive, and deeply considered.

Step inside, and the immediate impression is one of scale. The G700 offers one of the largest cabins in business aviation, configurable into up to five distinct living areas. Yet what distinguishes it is not simply size, but restraint. Gulfstream understands that true luxury is never about excess. The proportions are carefully balanced, allowing each zone to feel intentional, never crowded, never redundant. There is a natural progression from one space to another, whether moving from a formal meeting area into a relaxed lounge or transitioning into a private suite designed for rest.

Light plays a defining role in shaping this atmosphere. The aircraft's signature oval windows, larger and more numerous than most in its class, introduce an abundance of natural daylight into the cabin. The effect is immediate. Long-haul flights feel less enclosed, less disconnected from the outside world. At cruising altitude, the presence of light creates a sense of continuity with the horizon. It is a subtle shift, but one that enhances the perception of space and time on board.

Wellness is approached with equal precision. The cabin environment is engineered to sustain comfort over extended distances, with optimised cabin pressure and advanced air purification systems working quietly in the background. The result is a noticeable reduction in fatigue, particularly on intercontinental sectors. Equally important is the aircraft's acoustic performance. The cabin remains exceptionally quiet, allowing conversations to remain private while also creating an ideal setting for rest. It is an environment that supports both productivity and recovery, depending on the demands of the journey.



Beyond the cabin, the G700's technological foundation reinforces its composure in the air. At its core lies Gulfstream's Symmetry Flight Deck, a cockpit system designed for precision and responsiveness. While largely unseen by passengers, it contributes to the smoothness of the flight itself. Touchscreen controls, active sidesticks, and integrated avionics systems allow pilots to operate with clarity and control, ensuring that every phase of the journey is executed with confidence.

What sets the G700 apart is its adaptability. The aircraft is not designed around a single lifestyle. It is built to accommodate many. Owners can personalise the interior to suit their needs, whether that means a formal dining area, a private bedroom with a fixed bed, or a lavatory equipped for long-haul missions. It is an aircraft that responds to its owner, rather than imposing a predefined experience.

Performance remains formidable. With a range exceeding 7,500 nautical miles and cruising speeds approaching Mach 0.9, the G700 connects major global cities with ease. Yet its true achievement lies in how it reorients the journey itself, turning long-haul travel into something measured, composed, and quietly indulgent.

## Dassault Falcon 10X

Where Bombardier champions speed and Gulfstream celebrates space, the Dassault Falcon 10X approaches the equation with a distinctly European sensibility. Precision. It is a philosophy shaped not by excess or spectacle, but by discipline, balance, and an unwavering commitment to control.

Dassault's pedigree, deeply rooted in military aviation, reveals itself in the Falcon 10X's aerodynamic clarity. The aircraft's wing design, engineered for both efficiency and stability, delivers a ride quality that seasoned travellers will immediately recognise. There is a quiet confidence in the way it moves through the air. Turbulence feels moderated, transitions feel deliberate, and the aircraft maintains a



sense of composure even when conditions are less than ideal. Rather than cutting aggressively through the sky, it carries itself with a measured fluidity that speaks to decades of engineering refinement.

Its range, extending to approximately 7,500 nautical miles, places it firmly within the ultra-long-haul category, connecting continents with ease. Yet, as with Dassault's overarching philosophy, performance is never pursued in isolation. Every metric, range, speed, efficiency, is carefully

balanced against control, reliability, and operational consistency. It is an aircraft designed not just to perform, but to perform predictably, time after time.


Inside, the Falcon 10X challenges long-held assumptions about cabin design. It introduces what is arguably the widest cabin in business aviation, offering a level of spatial freedom rarely seen at this altitude. This absence of constraint invites a different approach to interior architecture. Owners are no longer working within limitations. They are defining their own environment. The result is a cabin that adapts to individual lifestyles, rather than imposing a fixed interpretation of luxury.

This flexibility gives rise to interiors that feel less like aircraft cabins and more like curated living spaces. Private suites, modular lounges, and fully enclosed bedrooms can coexist without compromise. There is a quiet sophistication in the choice of materials, fine leathers, brushed metals, and soft textiles layered with restraint. Lighting is subtle, designed to complement rather than dominate, creating an atmosphere that feels calm, deliberate, and unmistakably refined.

Technology underpins every aspect of the experience. The cockpit draws directly from Dassault's fighter jet lineage, integrating advanced avionics that enhance both safety and operational efficiency. Fly-by-wire controls, perfected over decades, ensure that the aircraft responds with accuracy to every input, allowing pilots to operate with confidence and clarity. The result is not just precision in movement, but assurance in every phase of flight.

The Falcon 10X also places strong emphasis on accessibility. Its ability to operate from shorter runways than many aircraft in its class opens access to a broader network of destinations, particularly in regions where infrastructure is less accommodating. For owners who value discretion and proximity, this translates into meaningful flexibility, arriving closer, faster, and with greater ease.

Ultimately, the Falcon 10X is an aircraft that speaks softly, yet with authority. It does not rely on spectacle to assert its presence. Instead, it convinces through coherence. Every element, from aerodynamics to interior design, aligned with a singular philosophy of precision.

In examining these three aircraft, it becomes clear that the future of private aviation cannot be reduced to a single metric. The Bombardier Global 8000 champions speed without sacrificing well-being, the Gulfstream G700 elevates spatial experience into an art form, and the Dassault Falcon 10X brings discipline and control to the forefront of performance. Each represents a different philosophy of flight, yet all converge on a singular truth: luxury aviation is no longer about getting there first. It is about arriving better. 



**MORE THAN RED**  
A Single Owner Collection of Exceptional Works by Yayoi Kusama

不止於紅  
草間彌生日本單一藏家珍藏專場



This dedicated sale presents six exquisite works spanning multiple themes and media, forming a meticulously orchestrated visual symphony. Leading the sale is a deeply evocative red pumpkin painting, which resonates and interplays with works in other colours on canvas, sculpture, and prints – together revealing the rich and multifaceted artistic spirit of Yayoi Kusama.

From the Impressionists and Matisse to post-war contemporary art, colour has become an independent language through which artists express the self and convey spiritual force. As one of the three primary colours, red possesses an innate visual power and emotional intensity. It symbolises the sacred, authority, celebration, auspiciousness, and the power to ward off evil. As early as the 1960s, Kusama recognised colour as an autonomous visual language, leading her to develop monochromatic paintings. Red, second only to white, remains her favourite colour.

Red is intimately linked to Kusama's 'obsession'. It permeates every corner of her work, merging the pumpkin form with the net pattern. For Kusama, each red net is a vast universe – the pumpkin, in isolation, becomes one with the earth.

Kusama's pumpkin is one of the most iconic symbols in global art today. Drawing inspiration from personal experience and everyday life, she weaves artistic aesthetics through a flattened, symbolic, and instantly recognisable visual language. Each pumpkin work is a unique individual. Like human beings, they possess distinct personalities and forms – some slender, some full and rounded, some sitting upright with a sense of movement, others slung lazily and composed. It is precisely this unity within diversity that allows the pumpkin to function both as a universally memorable symbol and as a vessel preserving the warmth of the artist's hand and spirit.

'More Than Red' is a prism through which we glimpse the vast and profound creative universe behind Kusama's art. Each work is a portal leading to the same spiritual world – one of life, memory, obsession, and eternity.

Photos: Bonhams

# Scarlet Infinity

## The Obsession Behind Kusama's HK\$22.2 Million Pumpkin

by Alexis Toh

In the rarefied air of blue-chip contemporary art, where symbolism often outweighs spectacle, a single work can recalibrate the market's emotional and intellectual pulse. Such was the case in Hong Kong this March, when Yayoi Kusama's *Pumpkin* (2000), rendered in an exceptionally rare red, commanded HK\$22.2 million at Bonhams, anchoring a tightly curated, white-glove sale that spoke as much to artistic mythology as it did to collector appetite.

Yet, to view this result merely through the lens of market performance would be to miss the deeper narrative. Kusama's pumpkins are not objects. They are psychological landscapes, recurring manifestations of memory, identity, and an enduring dialogue with infinity.

### The Language of Red

Kusama's oeuvre is often associated with her iconic yellow pumpkins, punctuated by black polka dots. Playful, almost buoyant forms that have achieved global recognisability. The red pumpkin, by contrast, occupies a far more elusive and introspective territory. Its scarcity is not incidental. It is deliberate, emerging from a deeply personal chromatic vocabulary.

Kusama's relationship with colour took shape early in her career, particularly during her formative years in New York in the 1960s, where colour began to function as an autonomous visual language rather than mere ornamentation. The red in *Pumpkin* (2000) is therefore not decorative. It is visceral. It pulses with an intensity that

suggests both vitality and unease, drawing viewers into an almost hypnotic confrontation with the artist's inner world.

This red is inseparable from Kusama's lifelong experiences with hallucinations and her concept of "self-obliteration", a dissolution of the ego into an infinite field of repeating patterns. The intricate net structures enveloping the pumpkin's form echo this philosophy, creating a tension between containment and expansion, between the finite body and the boundless psyche.

### The Pumpkin as Alter Ego

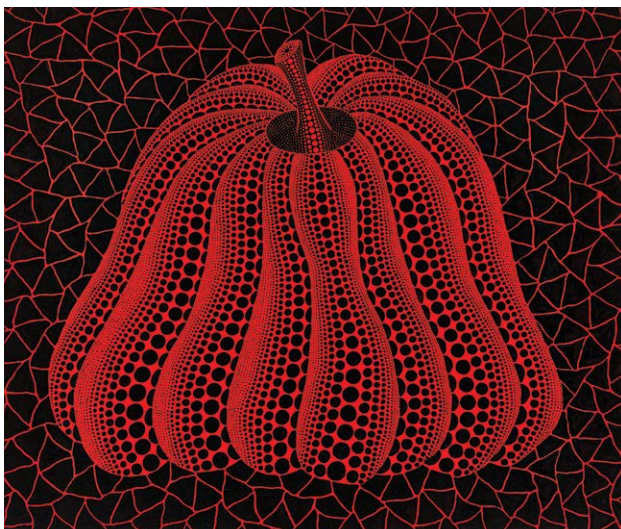
Few motifs in contemporary art possess the symbolic density of Kusama's pumpkin. What appears at first glance as a whimsical, almost naive subject is in fact a profound emblem of the artist's identity. The pumpkin is, in Kusama's own conceptual framework, both a spiritual anchor and an alter ego, rooted in childhood memory yet extending into a boundless, introspective dimension.

This duality is central to Kusama's practice. Each pumpkin exists as a distinct entity, subtly shifting in form and presence in response to the artist's state of mind at the moment of creation. This variability is crucial. It transforms the motif from a repeated image into a living, evolving subject, one that quietly registers her psychological rhythms over time.

In the 2000 canvas, the pumpkin is neither static nor purely representational. It appears to vibrate within its own pictorial space, its surface animated by an intricate web of dots and lines that suggest endless proliferation. The composition resists stillness, but invites immersion.

### A White-Glove Moment

The sale itself, *More Than Red: A Single-Owner Collection of Exceptional Works by Yayoi Kusama*, was notable not only for its headline result but for its precision. Comprising just six works, the auction achieved a "white-glove" outcome, meaning every lot found a buyer.



Such results are rarely accidental. They reflect a confluence of factors: curatorial discipline, market timing, and the enduring magnetism of the artist. In this case, the singular provenance of the collection added an additional layer of allure. Works fresh to the market, particularly those that have been held in private hands, often carry an aura of exclusivity that resonates strongly with collectors.

Marcello Kwan, Bonhams' head of Modern and Contemporary Art in Asia, emphasised the global breadth of interest, with bidders spanning Asia, the United States, and Europe. This international engagement highlights Kusama's unique position as both a cultural icon and a market powerhouse, an artist whose work resonates across geographic and generational boundaries.

### The Cult of Kusama

To understand why a single pumpkin can command such attention, one must consider Kusama's broader cultural footprint. Few artists have managed to bridge the gap between avant-garde practice and mass appeal as effectively as she has. Her immersive installations, most notably the Infinity Mirror Rooms, have captivated global audiences, creating a feedback loop between institutional validation and popular fascination.

This duality enhances the desirability of her paintings. Collectors are not merely acquiring objects. They are acquiring fragments of a larger, almost mythological narrative. The pumpkin, in this context, becomes a talisman, an entry point into Kusama's universe.

The red variant amplifies this effect. Its rarity transforms it into a connoisseur's prize, a work that signals both aesthetic discernment and access to the upper echelons of the market.

### The Quiet Power of Infinity

Ultimately, the success of *Pumpkin (2000)* lies not in its price but in its ability to sustain meaning across multiple registers. It is at once deeply personal and universally resonant, formally rigorous yet emotionally charged.

In Kusama's hands, the pumpkin rises far beyond its humble origins. It becomes a vessel for exploring infinity, a surface upon which the boundaries between self and cosmos dissolve. The red iteration intensifies this exploration, offering a glimpse into a more intimate, perhaps more turbulent dimension of the artist's psyche.

As the gavel fell in Hong Kong, the result reaffirmed not only the strength of the Kusama market but the lasting power of her vision. In a world increasingly driven by spectacle, Kusama reminds us that true artistic impact lies in repetition with purpose. In the quiet, obsessive act of returning to a single form and discovering, each time, something entirely new. 🍂

# The New Alchemists of Luxury

Rolls-Royce Through Mechanical  
Legacy and Maritime Vision

by Alexis Toh

**I**n the world of high luxury, ownership is no longer enough. True distinction lies in interpretation, in the ability to take an object already synonymous with prestige and reshape it into something more intimate, more expressive, and more singular. That is the territory in which the modern Rolls-Royce now moves most compellingly. Not merely as a maker of exceptional motor cars, but as a canvas for craftsmanship, identity, and imagination.

Photos: Rolls-Royce



Two recent creations illuminate this evolution with remarkable clarity. The first comes from Halcyon, the British luxury specialist devoted to restoring and re-engineering classic Rolls-Royces and Bentleys through an atelier-led approach rooted in craftsmanship, artistry and innovation. With The Great Eight Series, Halcyon introduces its first combustion-powered offering, remastering the Rolls-Royce Corniche around the marque's legendary 6.75-litre L-Series V8. The second comes from Rolls-Royce itself in the form of Cullinan Yachting, a quartet of Bespoke private commissions that translate the aesthetics, materials and spirit of contemporary marine craft into the architecture of the Cullinan.

What unites these two stories is not simply modification, but philosophy. One looks inward, preserving and elevating one of the most charismatic engines in automotive history. The other looks outward, drawing inspiration from the sea, the stars and the rituals of yachting life. Together, they reveal how the future of automotive luxury lies not in standardisation, but in deeply personal transformation.



### **The Great Eight Series – Halcyon Revives a Legend**

There are few engines in automotive history that possess the cultural gravitas of Rolls-Royce's 6.75-litre L-Series V8. Introduced in 1959 and built in Crewe, it would go on to power generations of Rolls-Royce and Bentley motor cars for more than six decades, becoming one of the longest-lived production engines ever created. It was never an engine obsessed with theatrics. Instead, it came to define a uniquely British kind of authority. Effortless, composed, unhurried, and confident enough to never raise its voice.

With The Great Eight Series, Halcyon has chosen to place this mechanical icon at the heart of a new chapter. The series marks the company's first combustion-powered programme following its electric interpretations of the Rolls-Royce Corniche and Silver Shadow, and broadens its portfolio with a classically mechanical expression of the same uncompromising Halcyon standard. Limited to just 60 one-of-one commissions, the programme applies Halcyon's remastering philosophy to create a bespoke grand tourer that retains the emotional resonance of the original while making it more capable, more usable and more compelling for the modern age.

The series is unveiled through the Rose and Scroll design study, a Rolls-Royce Corniche Fixed Head Coupé meticulously reworked to serve as both manifesto and masterpiece. Based on one of the most elegant shapes of the 1970s, and one of the last cars to emerge from the coachbuilding world of Mulliner Park Ward, it is less a restoration than a reinterpretation. Halcyon does not simply return the Corniche to former glory. It refines, re-engineers and elevates it beyond what period limitations once allowed.

That process begins with a comprehensive bare-metal restoration and unfolds over 5,000 hours in Surrey, England. Traditional coachbuilding techniques are combined with modern precision, resulting in a foundation resolved to a level that would have been impossible in its original era. Every surface is finished by hand, from the multi-layer paintwork to the interior detailing, producing a motor car that feels deeply crafted rather than merely assembled.

Visually, the Rose and Scroll design study is arresting in its restraint. Finished in Arboretum Green over Tan, it draws its character from the richness of the British landscape. The deep metallic green has the cool, shaded depth of mature evergreens, shifting subtly as the light changes, while the tan leather and open-pore wood lend warmth and natural luminosity to the cabin. Green accents bind the interior together with quiet confidence, creating an atmosphere that feels cultivated rather than contrived.

At the centre of this narrative sits the Halcyon Gallery, a 1.4-metre-wide fascia that transforms the dashboard into a piece of decorative art. Here, Halcyon depicts the Surrey hills it calls home through traditional rose and scroll engraving, accented by damascene kingfisher inlays that reference the mythical bird at the heart of the company's identity. It is a striking expression of place, heritage and craftsmanship, one that turns the interior from a luxury cabin into a storytelling environment.

Yet the true achievement of The Great Eight Series lies under the bonnet. When the Corniche and Silver Shadow were first introduced, their performance was once described as simply "adequate". Halcyon has taken that understated phrase and built upon it with reverence and intent. Its remastered 6.75-litre V8 preserves the deep reserve, composure and effortless delivery that made the original so special, while increasing torque, extending power delivery and improving responsiveness. The result is not a violent rewriting of character, but a disciplined enhancement of it. The engine feels entirely authentic, yet more capable than it has ever been.

This philosophy of discreet elevation extends throughout the car. Adaptive suspension, upgraded braking and continuously controlled electronic dampers bring greater confidence and composure to the drive, while preserving the cloud-like ride that defines the Rolls-Royce experience. Three drive modes, Drive, Spirited and Touring, allow the grand tourer's temperament to be tailored to the occasion, from long-distance serenity to sharper immediacy. Modern technologies such as wireless Apple CarPlay, Android Auto, a bespoke audio system, cruise control, reversing camera, climate control, and electrically adjustable heated and ventilated seats are integrated with notable restraint. The analogue beauty of the cabin remains intact. Convenience is present, but never intrusive.

This is what makes Halcyon's work so persuasive. It understands that the value of a classic Rolls-Royce lies not only in how it looks, but in how it feels. Its waftability, tactility and quiet sophistication are not sacrificed in the pursuit of relevance. Instead, they are protected and deepened. Each commission becomes a singular work of automotive art, shaped closely with its owner, with every detail, from bespoke paint finishes and upholstery to unique gallery concepts and wheel designs, tailored to personal taste and story.

In an era increasingly preoccupied with electrification, automation and digital abstraction, The Great Eight Series presents a persuasive case for mechanical continuity. It is a celebration of one of the greatest engines ever made, not preserved behind glass, but restored and re-engineered so that it may continue to be driven, cherished and experienced for decades to come. In Halcyon's hands, the Corniche does not become a relic. It becomes a living legacy.

### **Cullinan Yachting – Rolls-Royce Charts a Bespoke Maritime Voyage**

If Halcyon's Great Eight Series is an ode to mechanical legacy, Rolls-Royce Cullinan Yachting is a meditation on lifestyle, environment and aesthetic world-building. Presented as four Private Commissions, each defined by one of the cardinal points of the compass, North, South, East and West, Cullinan Yachting celebrates the material palette and design codes of contemporary yachting while honouring the marque's long and intimate relationship with marine craft.

That relationship stretches back more than a century. Charles Rolls' own family yacht, *Santa Maria*, offers a direct historical link between the marque and the maritime world, while Rolls-Royce's design language has long drawn subtle cues from yacht design. The "waft line" of its bodywork, for example, reflects the road in the same way a yacht hull reflects the water beneath it, creating an uncomplicated sense of movement and grace. Over the decades, this conversation between land and sea has surfaced in heritage models, in Goodwood-era commissions, and more explicitly in projects such as the Boat Tail. Cullinan Yachting extends that lineage with contemporary sophistication.

Each of the four Cullinan commissions is distinguished by a carefully orchestrated set of details inspired by marine life and yachting culture. The most immediately evocative are the hand-painted fascias and picnic tables, each featuring an artwork that captures the wake of a tender at speed, heading towards a yacht at anchor. The direction of





the wake corresponds to the motor car's cardinal identity, ensuring that every Cullinan is unmistakably one-of-one.

The creation of these artworks demanded extraordinary experimentation. Over two months, Rolls-Royce's artisans refined hue combinations, application methods and lacquering processes to achieve a lifelike, fluid effect. Pigment is airbrushed onto wet lacquer and then shaped by hand with a fine brush, while air is directed across the surface to guide the paint and create a natural sense of movement. The result is dynamic yet delicate, a visual impression of water in motion, frozen in an instant of elegance.

These painted elements sit within a broader interior composition anchored by Piano Milori Sparkle, a rich metallic blue used across the fascia to evoke the crystalline depth of the Côte d'Azur. Open Pore Teak appears throughout the interior, including the rear Waterfall, centre console lid and door panels. Commonly associated with yacht decks, the material lends maritime authenticity, tactile warmth and understated refinement. On the rear Waterfall sits an intricate marquetry compass motif, comprising more than 40 hand-assembled pieces of Sycamore, Teak, Ash and Black Bolivar veneer. It is both decorative flourish and symbolic anchor, reinforcing the commission's navigational theme.

The interior continues this voyage of discovery in Arctic White and Navy Blue leather, with Navy stitching, piping and monograms. Particularly notable are the seat inserts,

which feature a Bespoke rigging pattern inspired by twisted nautical ropework. Conceived by an artisan with a personal connection to the Royal Navy and trained in yarn, weave and embroidery construction, the pattern translates the structure of rope into diagonal bands of hand stitching. The result is richly textural and conceptually resonant, further deepening the sense that this is not simply a car with nautical references, but a motor car immersed in the language of maritime craft. Even the illuminated treadplates carry a rope motif, extending the narrative down to the threshold.

Above, the Starlight Headliner becomes a chart of Mediterranean wind patterns. Combining static and animated fibre-optic stars, it transforms the ceiling into a poetic map of moving air currents, interpreted by Rolls-Royce's Bespoke Collective of designers, engineers and craftspeople. Rather than merely glittering overhead, the stars guide the story, allowing occupants to feel as though they are steering by celestial and meteorological memory alike.

Externally, each Cullinan Yachting commission reflects its directional identity through colour. North appears in Crystal over Light Blue, evoking colder waters, South adopts Crystal over Arabian Blue IV, suggesting warmth and serenity, East is rendered in Dark Silk Teal, mysterious and deep, while West arrives in Sapphire Gunmetal, reminiscent of a storm-lit ocean sky. Each is finished with a hand-painted compass motif on the front wings, highlighting the relevant point in red, and complemented by a Twin Coachline in Phoenix Red and Arctic White. Fully polished 22-inch alloy wheels recall the mirror-bright deck fittings and brightwork of modern yachts.

What makes Cullinan Yachting so remarkable is the precision with which Rolls-Royce brings an entire world into automotive form. This is not thematic luxury in a superficial sense. It is an immersive luxury, where materials, colours, embroidery, painted art and even animated light are orchestrated into a complete sensory environment. Cullinan, already defined by its spirit of adventure and commanding presence, becomes an even more expressive platform for narrative Bespoke design.

Together, Halcyon's Great Eight Series and Rolls-Royce Cullinan Yachting reveal two complementary directions in the culture of automotive modification. One is rooted in the reverent preservation and refinement of heritage, and the other in the imaginative expansion of lifestyle into design. Both reject standardisation in favour of intimacy. Both treat the automobile not as a fixed object, but as a vessel for meaning.

And perhaps that is where true luxury now resides. Not in possession alone, but in the ability to shape an icon until it reflects a life, a memory, a landscape, or even the sea itself. 🌊



Photo: Capella Galaxy Macau

# Capella at Galaxy Macau

Opens as the Pinnacle of Ultra-Luxury Hospitality

by Priyanka Elhence

Capella at Galaxy Macau is a serene enclave within the celebrated world of Galaxy Macau – an exceptional property that offers a rarefied expression of hospitality within one of Asia’s most highly awarded luxury resorts.

Widely regarded as the crown jewel of the resort’s experiential offering, Capella at Galaxy Macau is designed for the most discerning guests. The golden-hued architectural landmark comprises just 95 suites and penthouses, occupying a privileged position within Galaxy Macau’s collection of luxury hotels. Conceived as an ultra-residential retreat, it offers privacy, expansive space, and excellent service, while maintaining an exceptionally low key-count and a welcoming sense of intimacy and seclusion. A contemporary sanctuary where a “gilded jungle” aesthetic meets refined modern luxury..

The opening of Capella at Galaxy Macau further strengthens Galaxy Macau’s status as the region’s premier experiential destination, offering guests a highly curated way to experience the luxury resort, and all that Macau has to offer.

Kevin Kelley, COO – Macau of Galaxy Entertainment Group, said: “Galaxy Macau was created as a destination where the world’s finest hospitality and ultra-luxury experiences come together. We are delighted to reveal Capella at Galaxy Macau to our treasured guests from

around the world, which showcases a new expression of our signature and ever-evolving ‘World Class Asian Heart’ service that is not just personalised but anticipated, promising that true exclusivity is no longer about spectacle – but about scarcity.”

Designed in collaboration with renowned Paris-based design studio Moinard Betaille, Capella at Galaxy Macau brings a distinct design sensibility to the city. Envisioned as a ‘residential sanctuary in Macau’, its aesthetics are influenced by jungle-inspired motifs found throughout the world of fashion, blending craftsmanship, sophistication and vintage luxury accents. The exterior architecture echoes the contours of Macau’s tropical landscape, offering a sleek, contemporary interpretation of ultra-luxury living.

Rather than enclosed opulence, the design emphasises soft curves and dappled light that mimics sunlight filtering through a rainforest canopy. From the moment guests enter the driveway, they are immersed in a calm, private environment that contrasts with the energy of Macau. This atmosphere is enhanced by multi-sensory digital artworks by Laura Cheung, founder of artisanal luxury homeware brand LaLa Curio, whose hand-finished, jungle-inspired walls feature in every suite.

Capella Culturists welcome guests in the Capella Living Room, a brand signature reimagined as a cocooning social salon, before being escorted to their private residences for in-suite check-in by a dedicated Capella butler – unique to the hotel. “Jungle Blue”, a Bruno Moinard abstract oil painting anchors the space, reflecting his signature Macau Blue palette inspired by the meeting of water and jungle. Here, the Capella Culturists host daily rituals such as tea ceremonies, baijiu tastings, and cultural introductions, as well as curate bespoke experiences connecting guests to Macau’s heritage and contemporary culture, from art tours to culinary masterclasses, or private helicopter and walking tours with insider access.

Capella at Galaxy Macau delivers a rare combination of grandeur, serenity and exclusivity, the ultimate exemplar of penthouse living. Offering the largest rooms in Southern China, the Capella Penthouses are among the most remarkable accommodations ever introduced in the territory. Two- and four-bedroom penthouses offer expansive indoor-outdoor living, with sliding glass doors opening onto breezy, light-filled terraces, sunrooms and glass-walled outdoor private infinity pools overlooking futuristic Hengqin island – where visionary engineering meets architectural finesse – achievements previously unseen in the region.

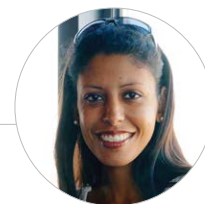
Artisanship is apparent in every detail, such as the penthouse entrance doors featuring bespoke woven horsehair panelling lining, offering superior acoustic protection and a refined, luxurious patina. One- and two-

bedroom suites (from 128 sq m) feature indoor relaxation pools, sunbeds, Amazonite marble bathrooms with mosaic floors, and polished finishes. Likewise, the four-bedroom penthouses (nearly 700 sq m), include a private Winter Garden with diamond-stitched leather upholstery inspired by vintage automotive seats; wellness room with state-of-the-art massage chair and TechnoGym personal training equipment, games room with foosball table, and butler pantry. A den-like, sound-proofed media and entertainment room houses a state-of-the-art home theatre and karaoke system, while airy, spa-like marble bathrooms feature generous soaking tubs and ultra-spacious his and hers showers. Two-bedroom penthouses include many of the same bespoke amenities, along with a dedicated VIK (Very Important Kids) room for family travellers.

Guests enjoy 24-hour butler service, packing and unpacking of luggage, a complimentary minibar, premium Chinese tea sets, locally sourced pre-batched cocktails, and luxury amenities from Officina Profumo-Farmaceutica Santa Maria Novella, along with Bugatti kettles and Illy Iperespresso machines for the ultimate coffee experience.

As part of Galaxy Macau’s reputation as one of Asia’s leading gastronomic destinations, Capella at Galaxy Macau introduces three distinctive dining and bar concepts. Pony & Plume, a whisky and cocktail bar designed by Moinard Betaille, features over 650 whiskies curated across eight flavour profiles, including rare and limited-edition labels, alongside guided tastings and signature smoke-infused cocktails inspired by Macau’s cultural heritage.

At Botanica, a 48-seater restaurant helmed by executive chef Stephen Hsu, international comfort classics are reimagined with Asian influences. And finally, further elevating Galaxy Macau’s culinary offering, acclaimed Hong Kong Michelin-starred chef and Krug Ambassador Vicky Cheng – of Wing Restaurant, ranked No. 3 on the Asia’s 50 Best Restaurants 2025 – will open a new independent fine-dining restaurant, presenting modern French cuisine shaped by his distinctive and adventurous culinary vision. 🍷



### About The Writer

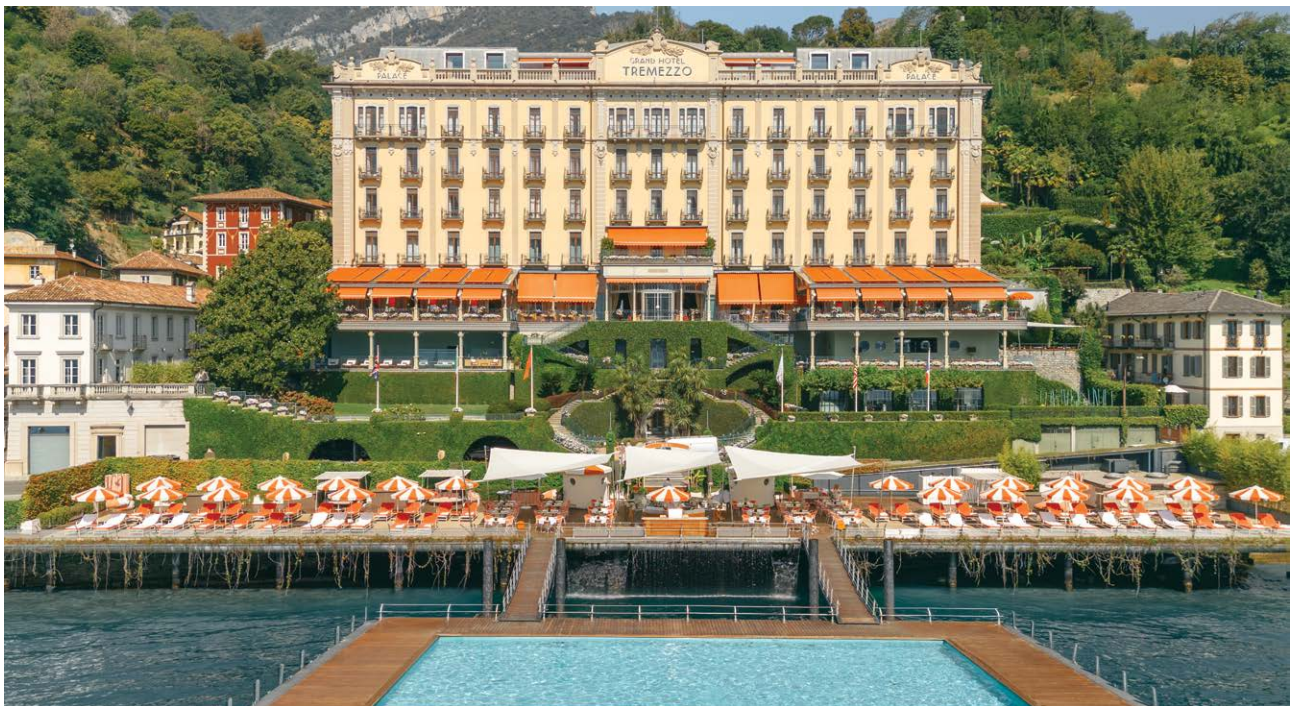
*Bred in The Seychelles and Kenya, Priyanka Elhence studied Hotel Management in Switzerland, coupled with working as a Recruiter in Palm Beach, before doing an MBA in Human Resources Management in London. Calling Singapore home for the past 20 years, Priyanka has been a Freelance Writer now for the past 8 years, writing about everything from luxury and dining, travel and lifestyle, to parenting and finance.*

# The Return of Lakeside Culture

## at Grand Hotel Tremezzo

by Priyanka Elhence

Grand Hotel Tremezzo welcomes guests back through its storied gates for the 2026 season, ushering in a spring defined by elegance, culture and timeless Italian glamour.



Photos: Grand Hotel Tremezzo

Reopening on 19 March 2026, the iconic lakeside hotel returns with a renewed celebration of artistry, heritage, and refined living. Set on the shores of Lake Como and framed by the rose-hued Grigne Mountains, the century-old, family-run property by the De Santis family represents a symbol of the warmest Italian hospitality. This Belle Epoque splendour features 67 rooms and 17 suites equipped with a multifarious array of world-class facilities.

Guests will find their own casa in città (home in the city) in the brand new Casabianca, a 1930s lakeside villa reimagined as an intimate art residence by Paolo and Antonella De Santis. Their desire to share works curated throughout their life together finds its home within Casabianca, which today

safeguards part of the De Santis family's contemporary art collection born from over forty years. Spread across three floors and fifteen beautifully restored rooms, there are no labels, no prescribed itinerary and no audio guides. The De Santis family chose not to rely on a curator, making every detail reflect their personal story, taste, and vision.

With a strong focus on contemporary Italian artists, this is the place to discover Arte Povera, a movement rooted in the 1960s and 70s, featuring almost fifty works including paintings, sculptures and installations by some of the most significant names in the global art landscape, including Vedova, Kiefer, Pistoletto, Kentridge, Paolini, Kounellis, among many others.

At its core, Casabianca remains a gracious city home where guests encounter the same spirit of hospitality that has made Grand Hotel Tremezzo and its sister property Passalacqua celebrated and loved around the world. Enhancing the experience is a collaboration with Cova, the renowned Milanese patisserie embodying Italian excellence and tradition, evoking the comforting warmth of a true Italian home on the ground floor.

Expanding its residential offering, Grand Hotel Tremezzo introduces the new Junior Suites with Park View overlooking the property's centuries-old gardens. Light-filled and elegantly proportioned, the suites combine pastel-toned open-plan interiors with refined period detailing and grand marble bathrooms, bringing the total room count to 77 and reinforcing the hotel's enduring sense of lakeside glamour.

Cultural collaborations and partnerships immerse visitors in Lombardy's artistic legacy. Usually exclusive to Como families who are palchettisti (box owners), Grand guests can enjoy rare access to a private theatre box reserved by the De Santis family. This exclusive privilege includes premium seating, behind-the-scenes tours, and premiere dinners in historic private residences.

Nearby, Villa Carlotta offers a 90-minute private guided experience, showcasing masterpieces by Antonio Canova, Bertel Thorvaldsen, and Francesco Hayez. Its 20-acre botanical gardens – home to over 150 varieties of azaleas – provide a vibrant seasonal display.

Wellness evolves with a renewed focus on longevity and anti-ageing treatments at the hotel's T Spa. Signature treatments include the Golden and Silk Skin experience, a 120-minute ritual inspired by ancient beauty traditions and

powered by the restorative properties of argan oil and the Collagen Facial, an intensive global anti-ageing treatment formulated with 100% pure natural collagen, designed to penetrate the deepest layers of the skin and stimulate the skin's own natural repair processes, restoring tone, firmness and elasticity.

Finally, don't miss the opportunity to indulge in the private hire of Villa Sola Cabiati, a beautifully preserved example of Italian neoclassical design, once home to the Dukes of Serbelloni.

An exclusive 18th-century villa on Lake Como, Villa Sola Cabiati offers timeless grandeur, private suites, historic interiors and unparalleled privacy all year round. In recent decades, Villa Sola Cabiati has been restored to its former glory by the current owners, the Castiglioni family, who opened the villa to the public in 2013. Today, the villa has been transformed into one of the most prestigious and well-preserved villas in the region. With its original, exquisite terrazzo floors, frescoes by the school of Tiepolo, and hand-crafted Murano chandeliers, it's a living museum, a testament to the grandeur and splendor of Lake Como.

With its arabesque gardens, six beautiful suites (sleep 12 pax in total), and an aristocratic history dating back to the 16th century, Villa Sola Cabiati (reached in minutes by car or boat) can be booked on an exclusive-use rental rather than a nightly hotel, complete with a private butler and staff available 24/7. Each suite comes with an ensuite bathroom and sitting area, and is filled with antiques, tapestries, museum-quality paintings and delicate majolica ceramics. Weekly rates in 2026 range from approximately EUR 70,000 to EUR 140,000 (US\$75,000–US\$150,000). 🏡



# Five-Star Hotels at Sea

## All Aboard the Future of Private Travel

by Priyanka Elhence



In partnership with one of the world's most iconic superyachts, Jumeirah introduces The Maltese Falcon, A Jumeirah Privé Experience – an 88-metre sailing yacht now available for private charter as part of its newly launched Jumeirah Privé collection.

One of the fastest-evolving trends in luxury travel is the growing appetite for bespoke, ultra-private, five-star experiences at sea, where the freedom of yachting is paired with the comfort, design, and service excellence of the world's leading hotels.

The global luxury cruise market closed at an estimated US\$15 billion in 2025, with a projected compound annual growth rate (CAGR) of 7% through 2033, highlighting the increasing demand for luxury private yachting experiences. With Asia Pacific expected to account for nearly half of all new high-net-worth individuals (HNWIs) worldwide between 2025 and 2028, the region is expected to drive some of the demand for the luxury cruise market.

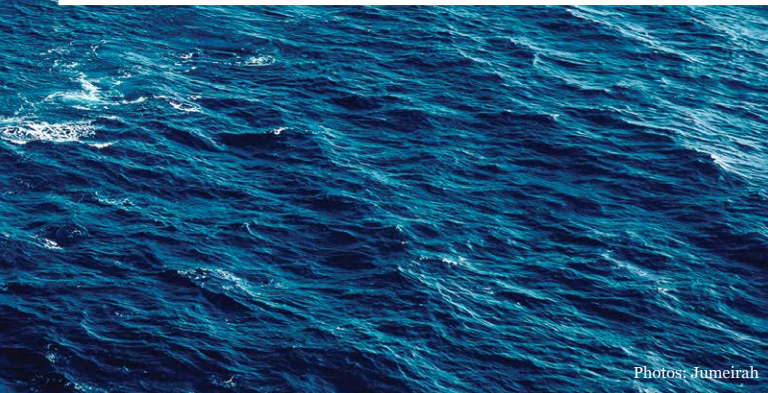
Jumeirah, a global leader in luxury hospitality and a member of Dubai Holding, has just announced a landmark partnership – The Maltese Falcon, a Jumeirah Privé Experience – introducing one of the world's most iconic superyachts into the Jumeirah Privé collection, marking the brand's strategic entry into luxury yachting.

The 88-metre sailing yacht is now available for private charter as part of Jumeirah's newly launched Jumeirah Privé collection. This curated portfolio of exclusive-use



escapes in extraordinary destinations marks a new era for the brand, offering ultra-personalised stays in some of the world's most unique settings. The Maltese Falcon embarked on its maiden voyage under the Jumeirah Privé banner in December 2025, setting a new standard of luxury on the water.

Through this partnership, Jumeirah brings its distinctive approach to hospitality onboard – from signature culinary experiences and wellness offerings to the intuitive, anticipatory service for which the brand is known. Every



Photos: Jumeirah

detail is designed to reflect Jumeirah's warm and generous spirit at sea.

The iconic sailing yacht is celebrated as being among the finest in the world, having garnered more than 18 awards since its launch in 2006, and continues to be hailed for its innovation, craftsmanship and timeless design. Its signature DynaRig system features three rotating, freestanding carbon-fibre masts capable of unfurling 2,400 sq m of sail in just six minutes.

Aboard the yacht, the experience begins in one of six impeccably appointed suites, including a spectacular full-beam master suite and private VIP deck. Contemporary interiors balance sleek Italian design with handcrafted finishes; while soaring deck spaces provide panoramic views of the sea. Wellness is woven into the journey – with a private massage room, fitness studio and sun-soaked yoga decks – while culinary experiences are tailored entirely to guest preferences, from chef-prepared tasting menus to sunset suppers on the aft deck.

Days are shaped by curiosity and calm. Guests can dive directly from the yacht into crystal-clear waters, enjoy private beach landings, or windsurfing, paddleboard and jet-ski across secluded bays. Evenings are spent under the stars – watching a film projected onto the sails, sharing stories in the three-deck atrium, or stargazing from the rotating sunbed on the main deck. Every moment is overseen by Jumeirah's expert crew and concierge team, ensuring service is intuitive and completely bespoke.

Having recently undergone an extensive refit, the Maltese Falcon boasts a refreshed aesthetic across its interiors and exteriors, along with state-of-the-art engineering enhancements. Accommodating up to 12 guests, it features a full-beam master suite, a private VIP deck on the flybridge with direct terrace access, and four double ensuite cabins. Leisure amenities include a three-deck atrium with skylight and sweeping staircase around the main mast, an outdoor cinema projected onto the lower sail, a rotating circular sunbed on the flybridge, and a dedicated wellness area with massage room and fitness studio. A variety of water sports equipment is also available for guests to explore their surroundings, including jet skis, kayaks, JetSurf boards, stand-up paddleboards and snorkelling gear.

Thomas B. Meier, chief executive officer of Jumeirah, said, "The Maltese Falcon marks an exciting chapter for Jumeirah Privé, extending our reach into the world of luxury yachting. Designed for the most discerning travellers, this collaboration reflects our commitment to creating distinctive and purposeful experiences that combine privacy, exclusivity and exceptional service. The yacht's heritage and craftsmanship are truly remarkable, and our role in this partnership will be to further elevate the onboard journey through our culinary expertise, wellness experiences, and the warm spirit of Arabian hospitality that defines Jumeirah."

Currently sailing the Caribbean, the Maltese Falcon's winter itinerary includes Antigua, The Bahamas, Saint Martin and St. Barth. Come summer, she begins her Mediterranean season in the Balearic Islands, mooring at Port Sóller (home to Jumeirah Mallorca), before setting sail for the French Riviera, Monaco, Italy's Amalfi Coast and Sardinia, as well as the Adriatic coasts of Croatia, Montenegro, Greece and Türkiye.

The Maltese Falcon experience will be the second offering in the Jumeirah Privé portfolio alongside Jumeirah Thanda Island in Tanzania, forming part of Jumeirah's four offerings, which also includes Jumeirah Icons, Jumeirah Hotels & Resorts, and Jumeirah Residences – each designed to meet the evolving needs of today's discerning travellers. 🌊

Venice Simplon-Orient-Express, A Belmond Train, Europe  
**Villeggiatura By Train**  
Uniting Global Travel Legends Via Rail

by Priyanka Elhence



Photos: Belmond and Venice Simplon-Orient-Express

Belmond launches its Villeggiatura by Train series, linking the legendary Venice Simplon-Orient-Express, A Belmond Train, Europe to four celebrated Italian properties, including a first-ever route from Paris to Pompeii.

In 2026, experience the journey of a lifetime with Belmond and discover Italy's treasures aboard the legendary Venice Simplon-Orient-Express (VSOE). from Paris to four remarkable destinations, staying at Belmond's iconic Italian hotels: Hotel Cipriani in Venice, Splendido in Portofino, Villa San Michele in Florence and Caruso on the Amalfi Coast.

Belmond has also introduced a new Italian journey series for the VSOE – Villeggiatura by Train. This collection continues its legacy of linking Europe's most romantic cities with its iconic hotels, including a highly anticipated new route from Paris to the Amalfi Coast (from £7,400 per person based on a Historic Cabin).

Widely regarded as the world's most famous train, the Venice Simplon-Orient-Express, a Belmond Train, has defined luxury rail travel since

its launch in May 1982, reviving the golden age of travel. Operating between March and December, the train features 16 meticulously restored carriages from the 1920s and 1930s, connecting some of Europe's most extraordinary cities, including Rome, Vienna, Florence, Paris, Venice and Istanbul.

From breathtaking landscapes to authentic cuisine, each journey blends luxury rail travel with unforgettable stays at five-star hotels across Italy. The result is a travel experience that captures the essence of *villeggiatura* – the Italian art of a slow, indulgent summer holiday. The true pinnacle of luxury isn't found in speed, but in surrendering to the journey itself – something the Venice Simplon-Orient-Express, A Belmond Train, has long embodied. With the debut of its most anticipated new route, the VSOE transforms a simple trip into the ultimate expression of *villeggiatura*: elegant, immersive, and unhurried.

These thoughtfully curated journeys combine the romance of slow travel with rich cultural and culinary experiences. Each itinerary brings guests to storied destinations – from Florence and its Renaissance heritage, to Portofino on the Italian Riviera, and, for the first time in 2026, Pompeii and the Amalfi Coast—as well as Venice and its iconic lagoon.

Each four-day journey begins with a one-night cinematic sojourn aboard the train, travelling in magnificently restored Art Deco carriages through Italy's coastlines, villages, and mountains, before continuing with a two-night stay at each destination. Bespoke experiences shape every stop, from cooking masterclasses and live music to arts and archaeology visits, scenic boat tours, and wellness rituals.

The first *Villeggiatura by Train* journey launches in May 2026, marking the debut of a historic three-day route from Paris to the Amalfi Coast. For the first time, the journey includes a stop in the ancient city of Pompeii, a UNESCO World Heritage Site. The trip concludes with a two-night stay at Caruso, A Belmond Hotel, Amalfi Coast, situated in the striking hilltop town of Ravello.

The voyage begins with a Champagne welcome aboard as guests settle into one of three cabin categories: historic twin cabins, elegant Suites, or Grand Suites. As evening falls, guests enjoy an exceptional dinner inspired by the regions along the route, followed by cocktails and live piano music in the train's iconic Bar Car '3674'.

By morning, guests wake to sweeping views of the Italian hills while enjoying breakfast served in the comfort of their cabins. The journey then continues as lunch is served on board, before arriving in Pompeii. Here, guests disembark for a guided tour of the extraordinary ruins of the UNESCO World Heritage Site. Grand Suite guests will also enjoy



exclusive access to the rarely opened Casa del Larario Regio V – an archaeological treasure, supported by Caruso's preservation efforts, renowned for its rich history and the iconic and newly restyled La Piscina infinity pool, perched 1,000 feet above the sea.

At Caruso, the experience continues with an evening celebrating the flavours of the Cilento region, from Michele Ferrante's Controne beans, Donatella Marino's Menaica anchovies to Raffaello Palladino's Gioi Cilento "soppressata" and Franco Vastola's artichokes. Executive Chef Armando Aristarco hosts a live cooking demonstration by the hotel's wood-fired pizza oven beside the infinity pool overlooking the Mediterranean. The evening unfolds with regional wines, local delicacies and traditional music against the glittering backdrop of the Amalfi Coast.

The following day invites exploration by land or sea. Guests may embark on a private boat tour to Positano, discovering hidden coves and azure waters, or join a painting lesson with a local artist at Caruso's Loggia terrace, capturing the breathtaking coastal views on canvas as a personal keepsake.

On the final evening, guests gather in Caruso's Wagner Gardens for a gala dinner, beginning with an aperitivo and followed by a fine dining menu created by Executive Chef Armando Aristarco. This celebration unfolds against panoramic views of the Amalfi Coast, accompanied by live music – a fitting finale to this unforgettable escape. 🌿

# The Ultimate Frontier

## Inside the Newly Reimagined White Desert Antarctica

by Priyanka Elhence

Experience luxury and adventure in Earth's most remote place with White Desert Antarctica, the world's leading operator of high-end Antarctic expeditions.

**A**t a time when many seek to unplug, White Desert offers something far more profound: a rare connection to a landscape that feels entirely beyond the familiar.

This season marks a significant milestone for the continent's most storied operator. More than a mere seasonal reopening, it is a total redesign of its flagship Whichaway Camp and a thoughtful relaunch of Explorer Camp. Together, they offer a renewed way to experience the world's last great wilderness, shaped by two decades of pioneering excellence.

Set within one of the planet's most remote landscapes, White Desert's three luxury camps create a striking contrast with beautifully engineered, heated pods that deliver exceptional comfort and considered detail in the

heart of Antarctica's wilderness. Built with minimal environmental impact, each camp operates to the highest sustainability standards.

### **Whichaway Camp – A Pioneering Legacy, Reimagined**

The original camp, newly reimagined.

Whichaway Camp is where the White Desert story began, founded by Patrick and Robyn Woodhead. When Patrick first ventured across this wild stretch of coast, surrounded by rugged ridge lines and frozen horizons, he asked, "Which-a-way?" The name stuck, capturing the quiet thrill of stepping into the unknown that defines this site. Set within one of Antarctica's rare ice-free oases – a distinction shared by less than three percent of the continent –

Photos: White Desert Antarctica



Whichaway Camp reveals a side of Antarctica few can imagine.

Opened in 2005 on the site of a former East German science base, the camp blends contemporary design with a legacy of research and discovery. Six state-of-the-art pods sit on the rocky terrain, each suite featuring a private en-suite bathroom and shower, while large glass conservatories frame uninterrupted views of the surrounding glacier, providing warmth and an understated elegance that invites guests to slow down.

This season, the flagship camp has been transformed into a space that balances the raw power of Antarctica with an atmosphere of refined escapism. Nestled in the Schirmacher Oasis, the camp looks out over dramatic blue cliffs and a chain of more than a hundred pristine freshwater lakes. The newly reimagined pods offer a cinematic hideout where



warmth and elegance invite guests to slow down, providing a soft counterbalance to the ancient, jagged beauty just beyond the window.

### Explorer Camp - The Soul of the Expedition

A return to expedition roots.

The relaunched Explorer Camp offers a tactile connection to White Desert's expeditionary roots. Positioned beneath the watchful rise of T-Rex Mountain, the camp embraces a "polar adventure meets Alpine-chalet" aesthetic, a rustic and warm base for the South Pole journey, surrounded by sweeping ice fields that stretch to the horizon.

Designed for those who seek authentic adventure, the camp embraces purposeful simplicity. Heated bedroom tents open onto vast, ever-changing vistas, giving each morning a renewed sense of discovery. This Alpine-style camp captures the spirit of exploration in its most elemental form – bold in its setting, minimal in its footprint, and deeply connected to Antarctica's raw wilderness. Explorer Camp serves as the ideal launch point for White Desert's signature South Pole expedition into the wild, while remaining cocooned in the

hospitality and safety that have made White Desert the global benchmark for polar travel.

### Echo Base - A Glimpse into the Infinite

Where exploration meets imagination.

Echo Base remains a frontier outpost inspired by astronauts, used by explorers. Set on a remote glacier and framed by towering nunataks, its futuristic pods feature floor-to-ceiling windows that blur the line between ice and sky. Arriving at Echo Base feels like stepping into a future imagined during the golden age of space exploration: clean lines, gleaming surfaces, and sweeping infinite views.

As White Desert's most avant-garde camp, Echo Base captures the thrill of exploration and the wonder of stepping into the unknown, a rare moment where familiar perspectives fall away, leaving only a deep sense of awe.



The idea for Echo Base was conceived in conversation with astronaut Buzz Aldrin during his visit to Antarctica, making it as close as one can get to leaving Earth without stepping off the planet.

Despite its remote setting, comfort remains central. Each pod includes a private en-suite shower, offering warmth and restoration amid one of the most extreme environments on Earth. 🏔️

Photos: Maison Margiela



# MaisonMargiela/folders The Archive, Unfastened

by Wayne Tan

There is something quietly radical about a maison choosing to reveal not just its finished garments, but the thinking that precedes them. With *MaisonMargiela/folders*, the Parisian house does precisely that, unsealing its internal ecosystem and reframing the archive not as a static repository, but as a living, breathing organism. Across Shanghai, Beijing, Chengdu and Shenzhen, the project unfolded less like a travelling exhibition and more like a dissection of the Margiela psyche, one that resists theatrics in favour of process.

At its core, *folders* is an exercise in transparency, though not in the conventional sense. It does not simplify. It complicates. By opening access to working documents, image banks and internal references, tools typically confined to atelier walls, the Maison invites its audience into a rarified space where ideas remain unfinished, provisional, and gloriously unresolved.

## Shanghai – The Collection as Laboratory

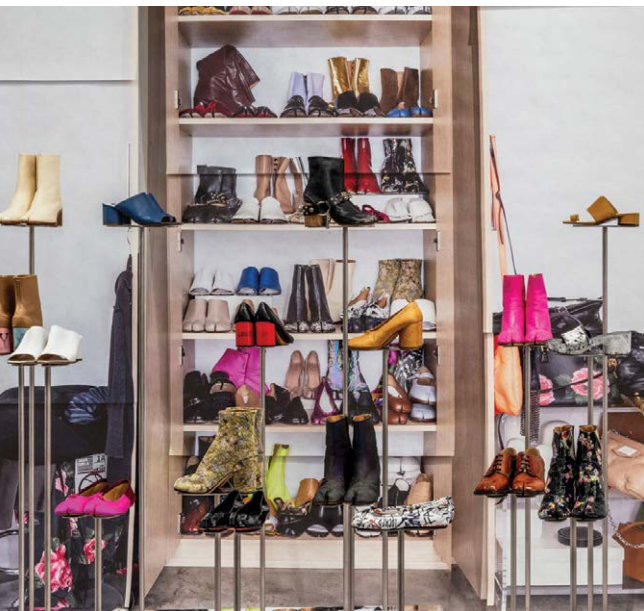
The journey began in Shanghai, where the Fall/Winter 2026 presentation set the conceptual tone. Eschewing theatricality, the show adopted the language of industry, container-like structures, raw spatial planning, and the cadence of a working environment. It was less runway, more atelier in motion.

Here, Glenn Martens demonstrated an acute sensitivity to the house's lexicon. Porcelain illusions, engineered through layered organza, blurred the line between fragility and construction. Tailoring archetypes were dismantled and reassembled with deliberate irregularity, tails severed, fabrics fused, silhouettes suspended between eras.

The effect was not nostalgia. It was interrogation. What does it mean to inherit a language as codified as Margiela's, and still speak in one's own voice?

That question extended seamlessly into the *Artisanal: Our Creative Laboratory* exhibition, staged immediately after. Installed within open-air containers along Yan Dang Road, the presentation assembled 58 couture pieces spanning decades, tracing a lineage of experimentation that has long defined the house.

Here, garments were not merely displayed. They were decoded. Upcycling, deconstruction, trompe l'oeil and the reconfiguration



of everyday materials were positioned not as techniques, but as ideologies. The Artisanal line, often misunderstood as simply couture, revealed itself instead as a site of perpetual research, a laboratory where failure is as essential as success.

### Beijing – The Disappearance of Identity

If Shanghai examined construction, Beijing turned its gaze inward. The *Anonymity* exhibition revisited one of Margiela's most persistent provocations, the erasure of the individual.

From early veils to more elaborate masks, the exhibition traced a shifting interplay between presence and absence. Identity, here, was neither fixed nor performative. It was deliberately obscured, allowing the garment to assume primacy. Yet this was not anonymity as negation. It was anonymity as intent. By removing the face, the Maison reorients attention toward craft, materiality, and form. It is a philosophy that feels increasingly subversive in an era driven by visibility.

### Chengdu – The Tabi as Personal Archive

In Chengdu, the narrative shifted from the institutional to the intimate. The *Tabi: Collectors Exhibition* offered a rare glimpse into how a design becomes lived experience.

Nine collectors from across the globe presented their personal wardrobes, each reconstructed with an almost anthropological precision. Through these installations,



the Tabi, first introduced in 1989, emerged not simply as footwear, but as an evolving artefact shaped by its wearer.

Scuffed leather, customised finishes, carefully preserved pairs, each detail spoke of a relationship between object and owner that extends beyond seasonal relevance. The Tabi, in this context, is less product and more companion. A constant, reinterpreted over time yet anchored by its unmistakable split-toe silhouette.

### Shenzhen – The Gesture of Transformation

The final chapter in Shenzhen distilled the entire project into a singular, tactile act. The *Bianchetto: Atelier Experience* invited participants to bring their own garments into the fold, quite literally.

Under the guidance of the Maison's atelier team, pieces were coated in white paint using the Bianchetto technique, a method introduced in the house's earliest collections. What begins as concealment evolves into revelation. The paint cracks, fades, and records the passage of time, allowing the garment's history to re-emerge through its surface.

It is, in many ways, the most democratic expression of Margiela's philosophy. Anyone can participate. Yet the outcome remains deeply personal. Each piece marked not just by the hand that painted it, but by the life it continues to live.

### The Archive as Living Practice

What *MaisonMargiela/folders* ultimately achieves is a reframing of creative ownership. The archive is no longer retrospective. It is active, iterative, and open-ended.

By revealing its internal processes, its drafts, its references, its incomplete thoughts, the Maison challenges the industry's fixation on the final image. It suggests that luxury does not reside solely in the finished garment, but in the thinking that shapes it.

For Martens, this is a delicate balancing act. To honour Margiela's legacy without reducing it to a museum piece requires both restraint and conviction. Throughout *folders*, he demonstrates an understanding that the house's true strength lies not in its codes alone, but in its willingness to question them.

In the end, the project is less about looking back than it is about recalibrating how we look. At a time when fashion is increasingly accelerated, digitised and consumed in fragments, *MaisonMargiela/folders* offers something rarer, a pause. A moment to consider not just what we see, but how it came to be.

And in that pause, the Maison does something quietly incisive. It reminds us that the most resonant ideas are rarely the most visible. 🏠

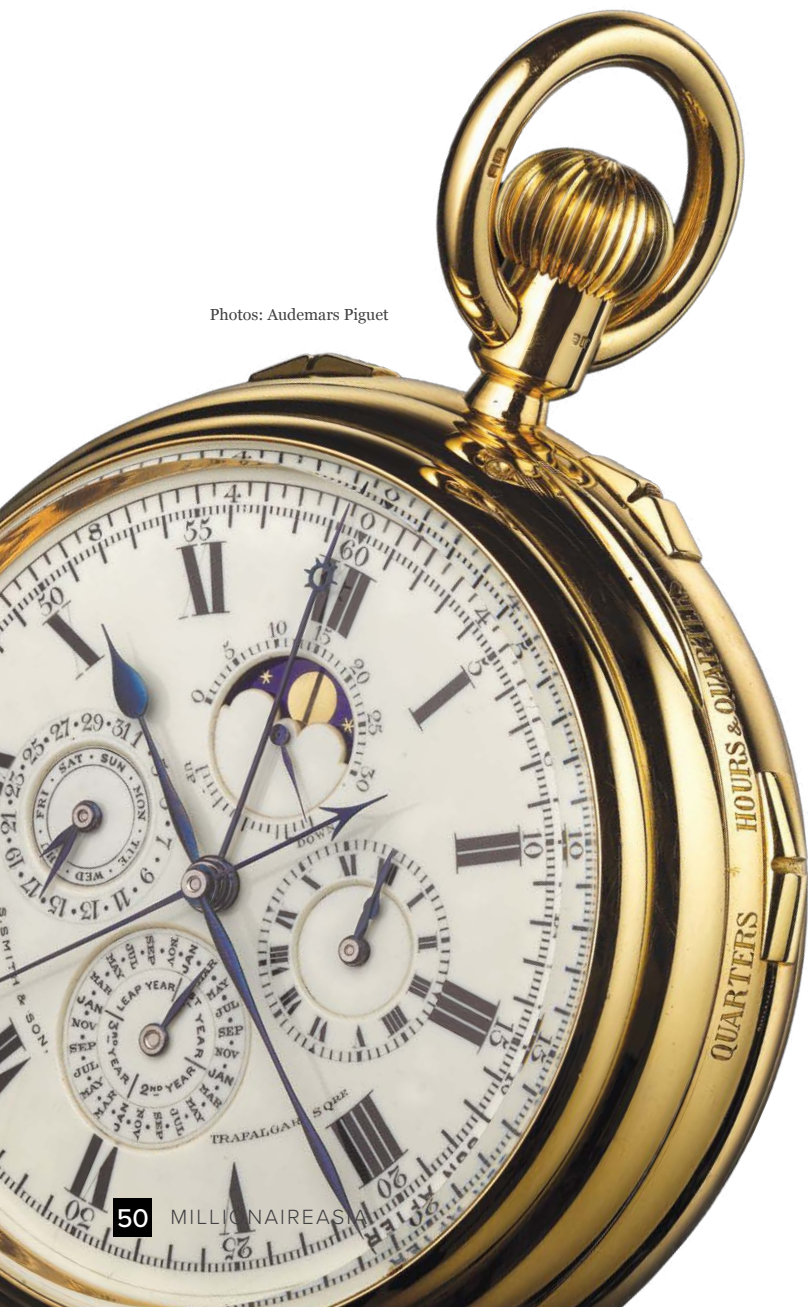
# AUDEMARS PIGUET

## ACQUIRES HISTORIC “GROSSE PIECE” AT AUCTION

by Priyanka Elhence

Audemars Piguet’s ultra-complicated 1914 pocket watch sold for a record \$7.7 million at auction, making it the most expensive AP timepiece ever sold under the hammer.

Photos: Audemars Piguet



Commissioned in 1914 and completed in 1921, the ultra-complicated S. Smith & Son Astronomical Watch – known as the “Grosse Pièce” – has remained hidden from public view until the 1990s. For decades, it was held within the prestigious Olmsted collection, admired only by a select few under strictest discretion.

Until now.

The Swiss haute horlogerie manufacturer recently reacquired one of its most historically important creations at the Sotheby’s Important Watches sale held in New York in December last year, as part of the landmark Olmsted Complications Collection. Bidding for the prestigious piece lasted just 10 minutes among four collectors, with Audemars Piguet itself ultimately reclaiming the timepiece – widely regarded as its most comprehensive astronomical watch.

Far surpassing its top estimate of US\$1 million, the sale marked the return of the iconic and extremely complex pocket watch to Le Brassus, the home of Audemars Piguet, in the brand’s 150th anniversary year. The acquisition reflects the luxury house’s enduring commitment to preserving watchmaking heritage and celebrating the art of horology. “The reappearance of the Grosse Pièce at Sotheby’s marks a historic moment for collectors and enthusiasts. That this should happen in our 150th anniversary year makes it all the more extraordinary. We are delighted to welcome this important timepiece into the AP Heritage Collection, where it will be preserved, studied and shared for generations to come,” said an AP spokesperson.

The value of the “Grosse Pièce” lies not only in its rarity but in the remarkable combinations of innovations it embodies. Commissioned by Smith & Sons of London for an American client in 1914, the “Grosse Pièce” was delivered in 1921 after six years of meticulous craftsmanship. It then disappeared from public view for decades, adding to its mystique and prestige, as traces of its existence could only be found in archival notes and rare photos. In 1970, famed watch collector Robert M. Olmsted added the iconic pocket watch to his prestigious lineup, where it remained until its recent re-emergence at Sotheby’s Exceptional Discoveries: The Olmsted Complications Collection auction.

Featuring 19 complications, the “Grosse Pièce” is tied with the legendary “Universelle” of 1899 as one of the most complicated pocket watches ever created by Audemars Piguet. It is also the brand’s only pocket watch from this era to include a tourbillon.

Crafted in 18-carat yellow gold, the “Grosse Pièce” is the most comprehensive astronomical timepiece ever created by Audemars Piguet and among the earliest to feature a sky chart. It depicts the night sky over London with 315 stars and 18 constellations, alongside sidereal time, a perpetual calendar, moon phases and the equation of time display. The only ultra-complicated Audemars Piguet watch of the 20th century, the pocket watch also includes a minute repeater, grande and petite sonnerie as well as a chronograph. According to Audemars Piguet’s Heritage Department, it is also the only watch from the brand to have such a celestial chart.



Like the “Universelle”, the “Grosse Pièce” is a living testament to the *établissage* system of the Vallée de Joux, which brought together specialised artisans to create some of the most complicated timepieces of the early 20th century. And thanks to the remarkable combination of all those complications, the sky chart, and the tourbillon, the “Grosse Pièce” has cemented itself in the history of haute horlogerie.

The US\$7.7 million price tag also sets a new record for the legendary watchmaker, making it the most valuable timepiece by the atelier ever sold at auction and the fourth highest price ever achieved for a watch at Sotheby’s. The previous record for an Audemars Piguet watch was US\$5.2 million for its one-of-one “Black Panther” concept watch, followed by Gerald Genta’s personal “Royal Oak”, which sold in 2022 for US\$2.1 million.

Audemars Piguet’s acquisition of this revered timepiece reinforces the brand’s commitment to safeguarding horological heritage for generations to come and showcasing exceptional *savoir-faire*. “The record-breaking result achieved by Audemars Piguet’s ‘Grosse Pièce’ is nothing short of extraordinary,” Daryn Schnipper, Sotheby’s chairman emeritus, international watch division, said in a statement. “It stands as a powerful reminder of the significance of this collection and the extraordinary heights that important horology can reach.”

The “Grosse Pièce” will now embark on a multi-year world tour, with stops at select retailers and AP houses as well as at special events, before being exhibited at the Musée Atelier Audemars Piguet in Le Brassus, where it will join “Universelle” as a fitting ending for such a grand piece of horological history. 🏰



# Oceania Cruises Débuts La Table par Maîtres Cuisiniers de France A Curated Expression of Haute Cuisine

by Wayne Tan



There is a quiet shift taking place in the world of luxury cruising. It is no longer enough for ships to dazzle with scale or spectacle. Today, the most discerning travellers seek exclusivity, craftsmanship, and above all, a sense of culinary place, even while adrift between continents. With the unveiling of *La Table par Maîtres Cuisiniers de France* aboard *Oceania Sonata* in 2027, Oceania Cruises signals a decisive move toward a more exceptional, almost atelier-like approach to dining at sea. This is far from being another speciality restaurant. It is, in many ways, a declaration of intent.

At its core lies an unprecedented collaboration with the Maîtres Cuisiniers de France, a fraternity that has long stood as the custodian of French culinary heritage. Their imprimatur is not easily granted. It speaks of discipline, of technique honed over decades, and of an unyielding respect for terroir and tradition. To see such an institution lend its name, and more importantly, its active participation, to a dining concept at sea is both remarkable and telling. It elevates the conversation from luxury dining to cultural stewardship.

The setting itself reinforces this philosophy. With just 18 seats, *La Table* embraces a scale more akin to a private salon than a restaurant. There is a deliberate restraint here, an understanding that true luxury often resides in limitation.





Photos:  
Oceania Cruises®



Each guest is not simply served. They are considered. The choreography of service, the pacing of courses, the dialogue between kitchen and table, all unfold with the precision of a well-rehearsed *dégustation*.

Yet, what ultimately defines La Table is not its exclusivity, but its culinary language. Under the direction of executive culinary directors Chef Alexis Quaretti and Chef Eric Barale, both Master Chefs of France, the menu reads like a contemporary interpretation of the French canon. There is reverence, certainly, but also a willingness to reinterpret. A tartlet pairing the crisp acidity of Granny Smith apples with the marine sweetness of langoustine speaks to balance and contrast. Dover sole, enriched with escargot and accompanied by rosace vegetables, becomes a study in texture and classical layering. Meanwhile, a spider crab potato roll crowned with Oscietra caviar offers a more modern expression, where indulgence meets architectural finesse.

These are not dishes designed to impress through excess. Instead, they reveal themselves gradually, through clarity of flavour, through technical nuance, and through an almost intellectual understanding of ingredient relationships. It is cuisine that invites contemplation as much as it delivers pleasure.

Crucially, the menu is not static. It evolves, shaped by a rotating ensemble of guest chefs from the *Maîtres Cuisiniers de France*. This introduces a dynamic quality rarely seen in maritime dining. Each voyage carries the potential for reinterpretation, ensuring that La Table remains alive, responsive, and ever in dialogue with the broader culinary world.

The experience extends beyond the plate. La Table will also host the Dom Pérignon Experience, a curated pairing that brings together a six-course tasting menu with a selection of exceptional Champagne vintages. Here, the interplay between cuisine and wine is elevated into a narrative of its own, one that traces the evolution of flavour across both glass and plate, and emphasises the French philosophy that dining is as much about harmony as it is about individual excellence.

In the broader context of *Oceania Sonata*, La Table sits as the crown jewel within a constellation of ten dining venues. From the refined familiarity of Jacques to the bold, pan-Asian expressions of Red Ginger, the ship offers a diverse culinary landscape. Yet, La Table occupies a distinct register. It is not designed for variety, but for depth. Not for casual indulgence, but for immersion.

There is also a deeper narrative at play, one that reflects Oceania Cruises' longstanding identity as a culinary-led cruise line. Since its inception, the brand has positioned gastronomy at the heart of the voyage. With La Table, that philosophy reaches a new level of articulation. It is no longer about offering fine dining at sea. It is about redefining what fine dining at sea can be.

What makes this development particularly significant is its timing. As luxury travellers become increasingly sophisticated, there is a growing appetite for experiences that feel both authentic and rare. Mass luxury, no matter how polished, struggles to satisfy this desire. La Table answers it directly. It offers not just exclusivity, but credibility, rooted in one of the most respected culinary institutions in the world.

In many ways, La Table represents a union of two worlds: the disciplined, terroir-driven traditions of French gastronomy, and the boundless, ever-shifting canvas of ocean travel. It is here, in this intersection, that something truly compelling emerges.

Not a restaurant defined by its location, but one that carries its identity across oceans.

And in doing so, it reframes the very notion of destination dining. 🍷

# A BESPOKE “CULINARY SAFARI” AT NOKU MALDIVES, VIGNETTE COLLECTION

by Priyanka Elhence

A highly immersive and interactive luxury epicurean adventure for gourmand couples and true connoisseurs, with curated cuisine, fine wine, spectacular scenery and fireside folklore that perfectly complement the destination.

**N**oku Maldives, Vignette Collection, the unique private island resort in the pristine Noonu Atoll, invites guests to leave the world behind and embark on its gourmet luxury Culinary Safari (US\$5,383++ per couple). Designed as a deeply indulgent, step-by-step journey across the island, this bespoke experience connects guests to the soul of the Maldives through exceptional food, intimate moments, and a spectacular natural setting.

The first Maldivian member of the Vignette Collection, IHG Hotels & Resorts’ family of one-of-a-kind properties, Noku Maldives is an intimate all-villa retreat, featuring 20 luxurious beach villas and 30 resplendent over-water villas. Surrounded by a private lagoon, the beautifully appointed rooms combine modern amenities with the natural beauty of the island.

Photos: Noku Maldives, Vignette Collection and IHG





Gastronomy lies at the heart of the experience. More than dining, the Culinary Safari is a multi-sensory journey curated by the resort's director of Culinary, showcasing the Maldives' finest produce alongside its rich traditions and storytelling heritage.

The experience begins at a bespoke pop-up Caviar & Oyster Shucking Bar, created exclusively for the occasion and set within the lagoon. Couples step into chest-deep water, surrounded by shimmering fish as flutes of champagne and oyster shooters are served, while a saxophonist plays romantic tunes to set the mood for an elegant evening ahead.

The journey continues into the Arrival Lounge, where guests enjoy a refined selection of appetisers, including red Sicilian prawns, Hokkaido scallops and Maldivian tuna tartare, paired with a Bloody Mary reduction mixed and poured tableside. At the Arrival Pavilion, a local fisherman presents the day's ocean-fresh catch, including reef fish and lobster, celebrating the Maldives' maritime heritage with expertly prepared seafood accompanied by wine or champagne and live music.

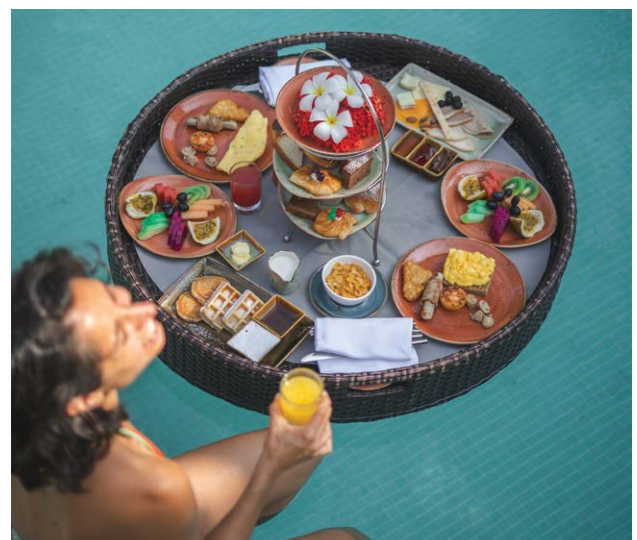
At the Maldivian House, an elegant, thatched pavilion overlooking the ocean, couples gather to experience Island Echoes – an enchanting pairing of fine flavors and folk stories around a warm fire pit. Sublime borscht soup with dill and smetana, and red wine are served by the beachside bonfire, inviting guests to relax, lay back and listen to timeless tales of Maldivian myth and legend, for a deeper connection to the spirit of the archipelago.

The experience then unfolds at the Chef's Herb Garden, where a dedicated horticulturist oversees the fresh herbs and vegetables harvested for the resort's culinary programme. Here, guests savour a seafood course featuring lobster, prepared with island herbs and paired with crisp white wine. Guests will also enjoy the Sorbet Interlude – a vodka-infused palate cleanser and fruit sorbet, served at the Palms Bar and accompanied with ambient pipe music.

The evening reaches its peak with a private beach dinner on Palms Beach. Set on the Maldives' famous powder-soft sands, couples get to savour premium cuts such as lamb loin and tomahawk steak, grilled and carved tableside, paired with fine red wines.

The journey concludes in the privacy of the villa, where an interactive dessert experience awaits at the pool deck. Serenaded by a live violinist, guests mark the final chapter of this unique epicurean odyssey with crêpes Suzette flambéed tableside and served alongside a selection of ice creams and petit fours, premium teas, fresh coffee, dessert wines and digestifs.

For those seeking deeper relaxation, an optional 90-minute spa ritual (from US\$259++ per couple) completes the experience. The holistic wellness experience begins with a soothing foot bath, followed by a chocolate body mask, a full-body massage, and a floral bubble bath – an ideal way to unwind after an unforgettable culinary journey. 🌿





Photos: JW Marriott Phu Quoc Emerald Bay Resort & Spa

# A Garden Soirée of Flavour

Inside Olivier Elzer's Latest Tasting  
Journey at Pink Pearl

by Wayne Tan

At the far edge of Vietnam's southern coastline, where the sea folds gently into the powder-white sands of Khem Beach, a different kind of culinary theatre has begun to take shape. It is not loud, nor is it performative in the way many destination dining experiences attempt to be. Instead, at Pink Pearl within JW Marriott Phu Quoc Emerald Bay Resort & Spa, the language is one of subtlety, balance, and quiet seduction, qualities that define the latest tasting menus by Michelin-starred chef Olivier Elzer.

Unveiled through an intimate garden affair, the evening itself set the tone for what this new chapter represents. Guests gathered beneath a constellation of warm lights, the tropical air carrying a sense of anticipation rather

than overt showmanship. It was here that Elzer, whose career spans an extraordinary constellation of Michelin accolades, introduced a menu that reads less like a sequence of dishes and more like a composed narrative of flavour, texture, and intent.

What distinguishes this menu is hardly its pedigree, but its sensibility. Elzer's culinary philosophy has long been anchored in classical French discipline, yet here, it evolves. There is a discernible lightness, an understanding of place, and an appreciation for the nuances of regional produce. The result is a thoughtful interplay between continents. France as foundation, Asia as inflection.

The opening movement sets this tone with quiet confidence. Oscieta caviar, paired with bonito tartare and lifted by citrus gel and fresh oyster, delivers a study in salinity and brightness. It is an introduction that does not overwhelm, but rather sharpens the palate, an invitation to pay attention. This is followed by a meticulously seared scallop, its natural sweetness framed by the gentle acidity of caviar jelly and the subtle heat of horseradish cream, achieving a balance that feels almost architectural in its precision.

As the progression unfolds, one begins to recognise Elzer's deeper intention: to anchor French technique within the rhythms of local terroir. The Vietnamese bulot, presented in a crystalline seafood consommé, is perhaps the most telling expression of this. It speaks of coastal Vietnam, yet is articulated through a lens of refinement that is unmistakably French. It is in these moments that the menu rises above replication and becomes interpretation.

There is, too, an undeniable sense of indulgence woven through the experience. The Carabinero red prawn arrives with a richness that is both decadent and controlled, its sweetness heightened by a carefully calibrated sauce and the vegetal clarity of asparagus. It is a dish that lingers, not through extravagance, but through quiet mastery.

The seafood crescendo arrives with red grouper, accompanied by mimolette espuma and cuttlefish. Here, texture becomes the protagonist. The harmony between

the firmness of the fish, the creaminess of the espuma, and the delicate chew of cuttlefish creates a composition that feels almost tactile. It is a reminder that fine dining, at its highest level, is as much about sensation as it is about flavour.

Then comes the pivot, the moment where the menu deepens. Charcoal-grilled A5 wagyu, paired with braised oyster blade and vadouvan sauce, anchors the experience in richness and depth. The smokiness of the grill introduces a primal note, while the spice-laced complexity of the sauce adds dimension. It is a course that does not seek to surprise, but to satisfy in the most profound sense.

Yet, just as the palate begins to settle into this richness, Elzer reintroduces levity. A passion fruit pre-dessert cuts through with vibrant acidity, its espuma and granita offering both contrast and clarity. It resets, recalibrates, and prepares the diner for the final act, a pavlova that closes the journey with elegance rather than indulgence, its layering of meringue, exotic fruit, and cream delivering a gentle, lingering sweetness.

What distinguishes this new tasting menu is its sense of cohesion. Each course feels intentional, part of a broader narrative that unfolds with measured pacing. There are no unnecessary flourishes, no gratuitous gestures. Instead, there is a disciplined focus on ingredient integrity and flavour clarity, principles that have long defined the finest traditions of French gastronomy.

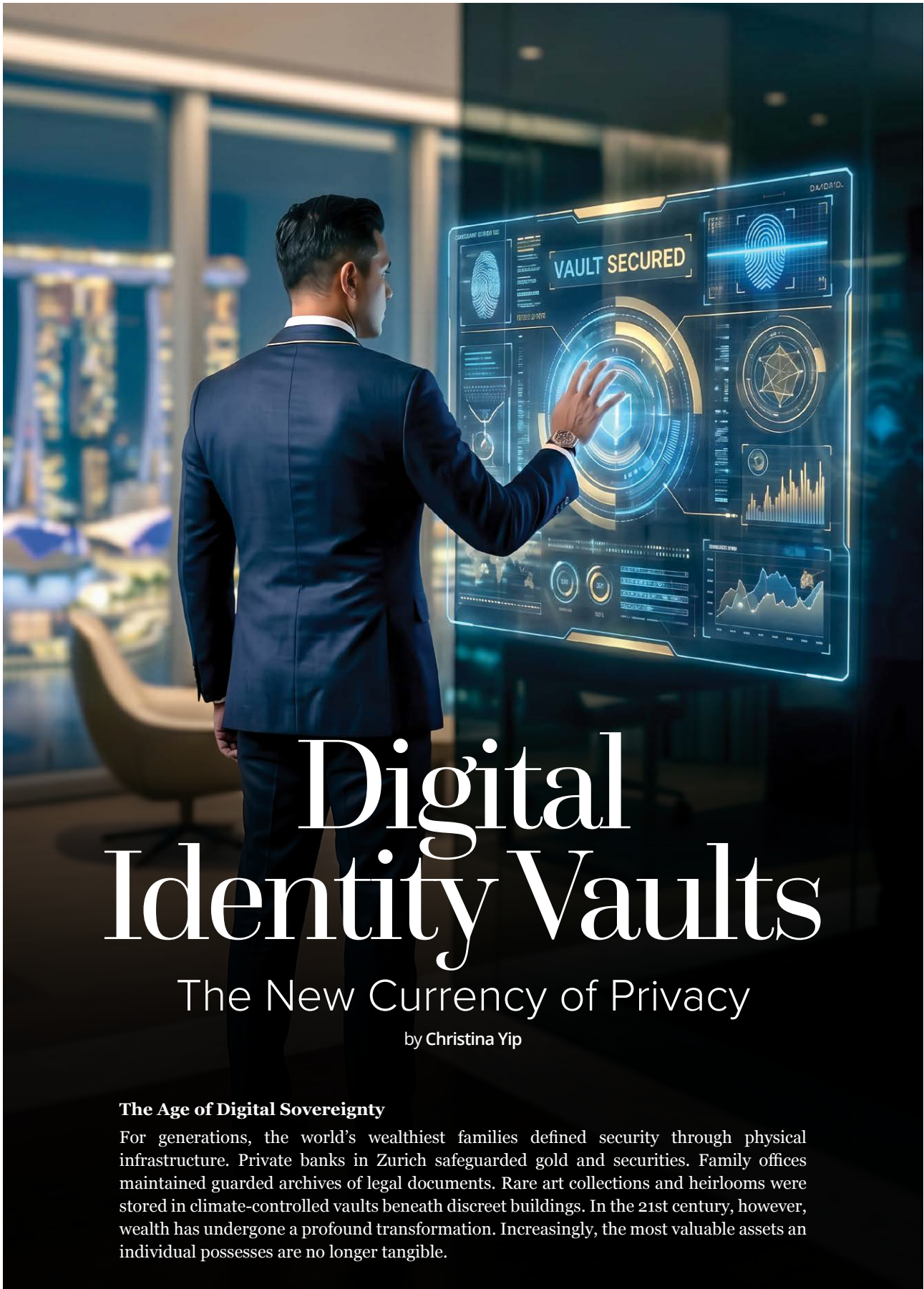
This vision is realised not in isolation, but through collaboration. Working closely with Chef de Cuisine Danny Do, Elzer ensures that his philosophy is carried through with consistency. It is this partnership that allows the menu to maintain consistency, ensuring that each plate arriving at the table reflects the same level of thought and discipline.

Beyond the cuisine, Pink Pearl enhances the experience as much as the menu itself. Set within a blush-toned mansion overlooking the sea, the space balances theatre with intimacy, its rich detailing echoing the menu's understated, assured sensibility.

More than a menu unveiling, this moment reflects a broader shift in Vietnam's fine dining landscape, where global culinary perspectives are thoughtfully adapted to local context. Phu Quoc, once defined by its natural beauty, is steadily emerging as a destination where gastronomy commands equal attention.

For the discerning diner, this progression resonates. Under Olivier Elzer's direction, dining becomes a quiet exploration, each course unfolding with intent, leaving behind not just a meal, but a memory enriched by clarity, place, and purpose. 🌿





# Digital Identity Vaults

The New Currency of Privacy

by Christina Yip

## The Age of Digital Sovereignty

For generations, the world's wealthiest families defined security through physical infrastructure. Private banks in Zurich safeguarded gold and securities. Family offices maintained guarded archives of legal documents. Rare art collections and heirlooms were stored in climate-controlled vaults beneath discreet buildings. In the 21st century, however, wealth has undergone a profound transformation. Increasingly, the most valuable assets an individual possesses are no longer tangible.

Identity itself has become a form of capital.

Today's ultra-high-net-worth individuals (UHNWIs) operate in an ecosystem where financial portfolios extend far beyond equities, property and commodities. Wealth now encompasses digital assets, tokenised investments, intellectual property rights, online reputation, biometric identity data and complex cross-border legal structures. The more global and technologically integrated an individual becomes, the more fragile these assets can be.

Against this backdrop, a new concept is redefining the architecture of security: the digital identity vault.

A digital identity vault is a highly encrypted ecosystem designed to consolidate a person's entire digital existence into a single, sovereign platform. Unlike traditional cloud storage systems, these vaults employ layered encryption, biometric authentication and decentralised architecture to ensure that the owner – and only the owner – maintains control over access.

In many ways, they represent the digital evolution of the Swiss private vault.

Yet unlike a safety deposit box that resides in a single location, digital identity vaults are designed to move with their owner. They can securely store biometric credentials, legal documents, tokenised financial assets, intellectual property, family trust records and even digital collectibles, all accessible through secure authentication anywhere in the world.

Asia has emerged as a central laboratory for this transformation. Innovation ecosystems in cities like Singapore and Seoul are pioneering technologies that merge cybersecurity, fintech infrastructure and digital identity systems into sophisticated personal vault platforms.

The reasons are structural. Asia hosts some of the most internationally mobile wealthy populations on earth. Entrepreneurs, investors and family offices often operate simultaneously across multiple jurisdictions, with residences, businesses and financial structures spanning continents.

For this new generation of global citizens, identity is no longer confined to a passport or a national database. It exists across digital platforms, financial networks and legal frameworks. Managing that identity securely has become a critical component of modern wealth management.

In the luxury economy of 2026, exclusivity is no longer defined solely by rare possessions or bespoke experiences. Increasingly, it is defined by control over information – who owns it, who can access it and how it moves across borders.

Digital identity vaults represent the infrastructure that makes such control possible.

### Asia's Laboratories of Trust

While the concept of secure digital identity has been explored globally, Asia's innovation hubs have moved fastest in transforming theory into reality. Governments, fintech startups and global technology firms are collaborating to build infrastructure capable of supporting sovereign digital identities.

In Singapore, the financial ecosystem has long positioned itself as a bridge between East and West. The city-state's regulatory environment, combined with its emphasis on financial security, has encouraged experimentation with blockchain-based identity frameworks and secure data ecosystems.

Under initiatives supported by the Monetary Authority of Singapore, research projects have explored how tokenised assets, encrypted identity credentials and digital financial records can be integrated into trusted digital environments. The result is a rapidly growing ecosystem of fintech firms building advanced identity vault platforms tailored for high-net-worth clients.

For Asia's wealthy families, many of whom maintain complex international structures, these technologies solve practical problems. A family office in Singapore might oversee property holdings in Tokyo, venture investments in Silicon Valley, philanthropic foundations in London and manufacturing operations in Southeast Asia. Each jurisdiction requires identity verification, legal documentation and secure communication.

Historically, these processes involved lawyers, private banks and an intricate web of intermediaries. Digital identity vaults dramatically streamline this complexity by enabling secure authentication across multiple systems.

Consider a hypothetical investor traveling between Hong Kong, Tokyo and Dubai within a single week. Through a secure identity vault, that individual can instantly verify credentials, authorise financial transactions or retrieve sensitive legal documents without exposing personal information to external systems.

Meanwhile, South Korea has developed a reputation as one of the world's most advanced cybersecurity environments. The technology ecosystem surrounding Samsung Electronics and a network of blockchain startups has produced cutting-edge biometric authentication systems integrated directly into consumer devices.

In Seoul's technology districts, developers are experimenting with identity vault frameworks that combine hardware-

level encryption with decentralised identity management. These systems allow biometric verification – fingerprint, facial recognition or behavioural biometrics – to function as the gateway to encrypted personal ecosystems.

Such developments are especially significant in Asia, where digital adoption rates are among the highest globally. Consumers are accustomed to managing finances, investments and communication through mobile devices. Extending this digital fluency into personal identity management is therefore a natural progression.

Yet for the region’s wealthiest individuals, these systems are not merely convenient tools. They are strategic assets designed to protect reputation, privacy and financial sovereignty.

**The Protection of Digital Wealth**

The importance of digital identity vaults becomes clearer when one considers how dramatically the composition of wealth has evolved over the past decade.

A modern portfolio may include not only traditional holdings such as equities, real estate and private equity, but also an expanding array of digital assets. These range from tokenised investment funds and blockchain-based real estate shares to rare digital art and intellectual property rights embedded in smart contracts.

The global rise of blockchain platforms such as Ethereum has enabled the tokenisation of luxury assets that were once entirely physical. Rare watches, vintage wines, collectible automobiles and contemporary artworks can now be represented as digital tokens on decentralised networks.

Asian collectors have become some of the most influential participants in this emerging market. Auction houses like Sotheby’s and Christie’s have hosted landmark sales of digital

artworks and tokenised collectibles, attracting bidders from across Hong Kong, Singapore and mainland China.

These developments have effectively created a parallel universe of luxury ownership – one that exists entirely in the digital domain.

Yet digital wealth brings new vulnerabilities. Cybercriminals have become increasingly sophisticated in targeting high-net-worth individuals. Phishing schemes, identity theft and ransomware attacks have evolved into complex operations capable of infiltrating private financial networks and digital asset wallets.

In some cases, hackers target the weakest point in a security chain: identity verification. Once they gain access to authentication credentials, they can move assets, access confidential data or impersonate individuals in high-value transactions.

Digital identity vaults address this threat through architecture designed specifically for resilience.

Rather than relying on a single centralised database, many vault platforms distribute encrypted data across decentralised networks. Sensitive files are broken into fragments and stored across multiple nodes, ensuring that no single breach can expose the entire dataset.

Biometric authentication adds another layer of protection. Instead of relying solely on passwords or two-factor authentication, vault access may require multiple biometric signatures – facial recognition, fingerprint scanning or even behavioural biometrics that analyse how a person interacts with their device.



Artificial intelligence systems further monitor access patterns, identifying anomalies that could indicate attempted breaches.

The result is a security environment that mirrors the complexity of the assets it protects.

For UHNW families managing global investments, philanthropic foundations and generational trusts, such infrastructure has become indispensable.

### The Luxury Ecosystem of the Future

As digital identity vaults mature, their role is expanding beyond security into a broader ecosystem of personalised services and predictive luxury.

In the coming decade, identity vaults are expected to integrate seamlessly with industries that cater to the world's most affluent clientele. Private aviation, elite hospitality and high-end mobility services are already experimenting with biometric identity frameworks designed to personalise experiences without compromising privacy.

Aircraft manufacturers like Gulfstream Aerospace are exploring digital cabin environments where passengers' encrypted identity profiles automatically configure lighting, entertainment and communications upon boarding. A traveller stepping onto a private jet could find the cabin temperature, lighting and dining preferences already tailored to their profile – all without sharing personal data with external systems.

Luxury hospitality is undergoing a similar transformation. Global hotel groups such as Aman Resorts are investing in secure digital guest identity platforms that allow returning visitors to move seamlessly between properties while maintaining complete control over their personal information.

For the world's most discerning travellers, such technology promises a new level of frictionless luxury. A biometric identity credential stored in a secure vault could allow a guest to check into a remote island villa, authorise payments and access private amenities without presenting documents or credit cards.

Beyond lifestyle convenience, digital identity vaults are also becoming powerful tools for legacy planning.

Family offices increasingly recognise that generational wealth now includes digital artifacts – intellectual property rights, cryptocurrency wallets, digital art collections and encrypted archives of family governance structures. Safeguarding these assets requires infrastructure capable of surviving technological change while maintaining strict access control.

Some vault platforms are therefore incorporating multi-generational authorisation frameworks, allowing trustees and heirs to access specific assets only under predefined conditions. In this way, digital vaults are evolving into dynastic repositories that preserve not only financial wealth but also the cultural and intellectual heritage of a family.

This evolution reflects a broader philosophical shift within luxury culture.

For centuries, the elite protected their fortunes through secrecy and physical security. Today, the challenge is different. Wealth exists simultaneously across physical and digital worlds, moving at the speed of data.

In such an environment, the most valuable asset is not simply capital or property. It is trust – trust that identity cannot be stolen, that information cannot be manipulated and that privacy remains intact.

Digital identity vaults represent the technological embodiment of that trust.

For Asia's globally mobile elite – entrepreneurs who build companies across continents, investors who operate in decentralised financial networks and families whose legacies span generations – these encrypted personal ecosystems are becoming indispensable.

Luxury in the past meant access to rare objects.

Luxury in the future will mean something far more powerful: complete sovereignty over one's digital self. 🏰



### About The Writer

*Having led and transformed fintech and blockchain companies across Asia since 2015, Christina is an accomplished chief marketing strategist. Her impressive track record includes accelerated growth in startups, ICO structuring, and leading marketing initiatives in various blockchain consultancy firms that worked with more than 200 blockchain projects, including Chainlink, Elrond, EOS, VeChain, NEO, Harmony, and Zilliqa. She is an expert in building effective distribution channels, forming strategic partnerships, and delivering high-impact advertising for customer acquisition, especially in the blockchain industry. Christina is also legally trained and has been actively involved in regulatory compliance topics in digital assets and emerging technologies. She is enthusiastic about the transition to Web 3.0 and believes in the creator economy fueling SocialFi projects.*

*Disclaimer: The information presented in this article reflects the author's personal views and opinions. It is provided for informational purposes only and does not constitute financial, investment, or professional advice. Cryptocurrency and digital assets, including Bitcoin, carry inherent risks and may not be suitable for all investors. Readers should always conduct their own due diligence and consult a licensed financial advisor or qualified professional before making any investment decisions.*

Experience-Led Yachting  
and Hospitality

# The Age of Perceptive Escape

by Christina Yip



### From Extravagance to Empathy

Luxury travel has always been associated with scale: larger yachts, grander suites, more remote destinations. For decades, the industry measured exclusivity through visible symbols of opulence – marble-clad lobbies, multi-deck vessels, private islands reserved for a select few. Yet by 2026, a subtle but powerful shift has begun to reshape the meaning of luxury escape.

The defining feature of modern indulgence is no longer extravagance alone. It is empathy.

In an age where ultra-high-net-worth individuals (UHNWIs) live hyperconnected lives filled with constant communication, travel and digital noise, the true luxury is not simply getting away from the world. It is entering an environment that understands your needs before you articulate them. This philosophy has given rise to a new paradigm across elite travel industries: experience-led design, powered by artificial intelligence, biometric insights and predictive personalisation.

The result is the emergence of what some insiders call perceptive escape – environments that respond to a guest's physical and emotional state in real time.

Nowhere is this transformation more visible than in Asia and the Indian Ocean, where a new generation of hospitality brands and yacht builders are designing experiences specifically for globally mobile elites. These clients, many of whom travel continuously between business hubs such as Singapore, Hong Kong and Tokyo, increasingly view travel not as indulgence but as recovery.

A weekend escape must reset the nervous system, restore focus and optimise physical well-being. Time itself has become the ultimate luxury asset, and experiences must justify every moment.

Technology has quietly become the enabler of this transformation. Advances in biometric sensors, wearable devices and artificial intelligence now allow hospitality environments to interpret subtle physiological signals such as sleep patterns, heart rate variability and stress levels. Rather than replacing human service, these systems augment it – allowing staff to anticipate needs with remarkable precision.

For UHNW travellers accustomed to tailored financial advice, bespoke fashion and curated art collections, the expectation that travel experiences should also be individualised feels natural.

*In the age of perceptive escape,  
the greatest luxury is not the  
distance you travel or the  
exclusivity of the destination.*

*It is the extraordinary feeling  
that the journey knows you.*

The difference in 2026 is that such personalisation is no longer based solely on preference questionnaires or returning guest notes. It is increasingly informed by real-time data, allowing environments to adapt dynamically.

From private yachts that adjust lighting based on circadian rhythms to resorts that modify spa treatments based on biometric feedback, luxury travel is evolving into a form of intelligent hospitality.

The destination may still matter. But increasingly, the defining question is no longer *where* you escape – it is how precisely the journey understands you.

### The Intelligent Superyacht

The superyacht has long been one of the most potent symbols of personal freedom. For decades, owning a yacht represented the ultimate expression of independence – the ability to leave the world behind and chart one's own course across open water.

Yet even this emblem of traditional luxury is being reimaged through the lens of perceptive experience.

Leading yacht builders are recognising that a new generation of Asian buyers is approaching yachting with different priorities. While size and craftsmanship remain important, wellness, personalisation and technology integration are rapidly becoming defining factors in yacht design.

British yacht manufacturer Sunseeker International has observed a growing demand from Asian clients seeking vessels designed around lifestyle optimisation rather than sheer scale. Buyers from cities such as Shanghai, Singapore and Bangkok increasingly request features that integrate health monitoring, circadian lighting systems and AI-driven itinerary planning.

Modern superyachts now incorporate wellness suites that rival the facilities of elite medical spas. Onboard diagnostic systems can measure stress levels, hydration and sleep quality, allowing wellness specialists to tailor treatments during the voyage. Lighting systems adjust automatically to align with passengers' circadian rhythms, helping travellers recover from jet lag as they move between continents.

Artificial intelligence has also begun to reshape how journeys themselves are planned.

Rather than relying solely on a captain's experience or a charter broker's recommendations, AI-assisted navigation platforms can analyse weather patterns, ocean conditions and guest preferences to design optimal routes. A voyage through the Andaman Sea, for example, might be dynamically adjusted to include secluded bays, ideal diving conditions or cultural experiences along the coast of Thailand.

These intelligent systems do not replace human expertise but enhance it, enabling crews to deliver experiences that feel both spontaneous and precisely orchestrated.

Asia's growing community of yacht owners is also reshaping cruising destinations. While the Mediterranean remains a traditional hub, many UHNW travellers are exploring waters closer to home. Archipelagos across Southeast Asia offer thousands of remote islands and coral reefs, providing unparalleled opportunities for private exploration.

Indonesia alone contains more than 17,000 islands, making it one of the world's most promising frontiers for superyacht travel. Destinations such as Raja Ampat have become legendary among divers for their extraordinary marine biodiversity.

In this environment, the superyacht becomes more than transportation. It becomes a floating sanctuary – one capable of interpreting its owner's physical needs while navigating some of the most spectacular landscapes on earth.

### **The Rise of Intelligent Sanctuaries**

While yachts are redefining freedom at sea, luxury resorts are undergoing a similar transformation on land. Across Asia and the Indian Ocean, hospitality brands are building environments designed not simply for relaxation but for physiological restoration.

Few destinations embody this evolution as vividly as the Maldives. This Indian Ocean archipelago, composed of nearly 1,200 coral islands, has long been synonymous with barefoot luxury. Yet its most exclusive resorts are now embracing advanced technologies that elevate wellness from indulgence to science.

At properties such as Soneva Fushi and Soneva Jani, wellness programmes integrate diagnostic tools capable of analysing sleep quality, metabolism and nutritional needs. Guests can undergo detailed health assessments upon arrival, allowing specialists to design personalised wellness journeys that combine spa treatments, movement therapy and nutrition planning.

Treatments are no longer static menu offerings. Instead, they evolve throughout a guest's stay based on biometric insights and progress metrics.

Meanwhile, urban sanctuaries are redefining luxury wellness within global cities. In the heart of Tokyo, the iconic Aman Tokyo has become a model for how advanced hospitality can coexist with deep cultural tradition.

The property's expansive spa integrates Japanese wellness philosophy with modern diagnostics, offering programmes that focus on sleep optimisation, stress reduction and mental clarity. Guests arriving from long-haul flights can undergo restorative treatments designed to recalibrate circadian rhythms and improve recovery from travel fatigue.

Nutrition has also become a central component of perceptive hospitality. Rather than offering generic wellness menus, elite resorts now collaborate with nutritionists and medical experts to design meals aligned with individual metabolic profiles.

This shift reflects broader cultural trends among wealthy travellers. For many entrepreneurs and investors, physical and cognitive performance are essential components of professional success. Vacations are therefore viewed not merely as leisure but as opportunities to enhance long-term well-being.

Technology plays a subtle role in enabling these experiences. Wearable devices track biometric indicators, while artificial intelligence systems analyse patterns and recommend adjustments to treatments, activity schedules or dietary plans.

The result is a hospitality environment that feels deeply personal – a sanctuary that responds to the body as intuitively as a skilled therapist.

### **The Future of Perceptive Travel**

The convergence of intelligent yachts and data-responsive resorts signals a broader transformation in luxury travel. The future of hospitality will not be defined by static amenities but by adaptive environments capable of evolving with each guest.



In this emerging ecosystem, travel experiences will increasingly begin long before the journey itself.

A traveller departing from Singapore for a wellness retreat in the Maldives may already have their preferences, sleep data and nutritional requirements securely stored in a digital identity platform. Upon boarding a private aircraft, the cabin lighting adjusts automatically to support optimal circadian alignment for the destination time zone.

Upon arrival at the resort, spa therapists receive anonymised biometric insights that help them prepare treatments tailored to the guest's physiological state. The villa's lighting, temperature and soundscape adapt dynamically throughout the stay, creating an environment designed to maximise rest and recovery.

Superyachts may soon function as extensions of these ecosystems. A guest departing from a Maldivian resort aboard a chartered vessel could find the onboard wellness suite already configured with treatments aligned to their ongoing programme.

Luxury travel thus becomes a continuous narrative of well-being, rather than a collection of isolated experiences.

Industry leaders recognise that the next generation of UHNW clients will expect this level of integration. Younger

entrepreneurs, many of whom built their fortunes in technology sectors, are accustomed to highly personalised digital services. They expect the physical world – including hospitality – to operate with similar intelligence.

Brands that succeed in this environment will not simply offer beautiful destinations or exceptional service. They will create ecosystems that interpret human needs with extraordinary sensitivity.

Ultimately, perceptive travel reflects a deeper philosophical shift in the meaning of luxury.

For centuries, the elite sought experiences that demonstrated power and status. Today's global elite increasingly seeks experiences that restore balance.

A superyacht gliding silently across tropical waters. A spa treatment calibrated to restore deep sleep. A meal designed to optimise long-term health. These are not displays of extravagance but expressions of a new luxury ethos – one rooted in awareness, personalisation and care.

In the age of perceptive escape, the greatest luxury is not the distance you travel or the exclusivity of the destination.

It is the extraordinary feeling that the journey knows you. 🏔️

# The Digital Gavel in the **Lion City**

## How AI is Reshaping Legal Practice in Singapore

by Richard Siaw



Photo: Magnific

### How AI is Reshaping Legal Practice in Singapore

The legal profession in Singapore is changing rapidly. Artificial intelligence is no longer a future consideration. It is already embedded in how lawyers research, draft, negotiate, and advise. For a jurisdiction that serves as a hub for international commerce, arbitration, and financial law, the implications are significant.

What sets Singapore apart is not just the pace of AI adoption, but the deliberate framework around it. The government, judiciary and professional bodies have positioned AI as a tool to support lawyers, not replace them. That philosophy is shaping how technology is being introduced, regulated, and taught across the profession.

At the Mass Call Ceremony on 20 April 2026, Chief Justice Sundaresh Menon gave a direct assessment of what AI means for legal practice in Singapore.

### The View from the Bench

AI is advancing at a remarkable speed and Singapore is approaching an inflection point. The effects are already being felt. Tasks once regarded as routine but foundational training for junior lawyers may now be performed, or at least substantially accelerated, by AI systems. Singapore's Minister for Law has observed that up to 44% of legal tasks could be automated by AI and done faster and better.

The scale of current adoption among lawyers is notable. In a survey conducted just days before the ceremony of all newly admitted lawyers, 92% indicated that they already use AI in their work. The Chief Justice was clear on what AI can and cannot do. AI can synthesise large bodies of information, improve access to knowledge, reduce the burden of repetitive work, and free lawyers and judges to focus on higher-order questions. Used wisely, AI has the real potential to materially enhance the administration of justice.

But its limits are equally clear. AI may accelerate analysis and imitate professional language, but it has no sense of values, cannot exercise conscience and does not understand the human significance of legal judgment. The courts are also exploring AI in case management, document processing, and decision support, but human adjudication remains non-negotiable wherever legal rights and liberties are at stake.

The thrust of the Chief Justice's message is clear: Singapore's legal industry will press ahead with AI, because it must. The question for the legal profession is how to do so without compromising the standards it exists to uphold.

### Ethics and Regulation

To this end, the Law Society of Singapore's 2026 AI Ethics Framework sets out binding principles for the use of AI

in legal practice, covering transparency, accountability, and client confidentiality. The core position is that AI supports professional judgment rather than replacing it. The Chief Justice identified the capabilities that matter most in this context: ethical reasoning, sound judgment in conditions of uncertainty, empathy for clients, and the moral courage to tell a client what they may or may not wish to hear. These are precisely the capabilities that cannot be replicated by machines.

And lawyers are also not the only ones relying on AI to answer their legal questions and woes.

### **When Clients Arrive with AI-Generated Advice**

Clients are increasingly arriving at consultations having conducted their own AI-assisted legal research, reviewed AI-generated summaries of their rights and obligations or formed views about their legal position based on responses from general-purpose tools like ChatGPT, Gemini, or Copilot. In many cases, they arrive not with open questions but with conclusions. Unbeknownst to them, those conclusions are not always correct!

The following are three actual cases encountered by the author of this article that illustrate the range of problems AI has created in practice.

#### **Case 1: No Offence, No Investigation – and No Role for the AGC or the Courts**

A client came to the author's office in a state of considerable agitation. He had left a taxi briefly to make a purchase at a nearby shop, leaving his brand-new Rolex watch in his backpack. When he returned, he intuitively reached for his watch in the backpack, which he had asked the driver to guard while he was away. To his shock, the watch was gone. Convinced that the taxi driver had stolen it, he compelled the driver to take him to the nearest police station and reported the incident. The police then conducted a search on the car, but they did not find anything amiss and dismissed the driver.

The AI advised him that since a police report had been made, he could instruct a lawyer to write representations to the Attorney-General's Chambers and to the court to press for action to be taken against the taxi driver. He arrived at the consultation with a clear expectation that both institutions were already engaged in his matter, and a strong sense that formal legal pressure could and should be applied immediately.

The author had to work through several layers of misunderstanding before any useful advice could be given. The first and most fundamental problem was that the client had assumed the police had taken up his case. They had not. At least not in any meaningful investigative sense. The mere filing of a police report does not mean that a case has been classified or that an investigation

has commenced. For an investigation to be initiated, the police must first assess whether a criminal offence is disclosed on the available facts.

In this situation, that assessment was far from straightforward. The client had left the watch unattended in the taxi and had not witnessed the driver taking it. The watch could have been stolen by the driver, but there is no hard evidence that could incriminate him. At the point of the consultation, the police had not yet classified the matter as a theft case. Without that classification, there was no active investigation, and without an investigation, there was no file to which representations could meaningfully be directed.

The second problem flowed directly from the first. Even if the police were to classify the matter and commence investigations, the Attorney-General's Chambers office plays no role at the investigative stage. The AGC's function in the criminal process is prosecutorial, that is, it reviews investigation papers after the police have completed their investigations and decides whether to charge the accused. It has no involvement before that point and no mechanism for receiving or acting on representations from a complainant while investigations are ongoing. Writing to the AGC at this stage would have been, at best, a letter sent to the wrong address at the wrong time.

The third problem was equally clear. The courts have no role whatsoever unless and until charges are filed. There is no judicial process to invoke, no application to make, and no proceeding to commence simply because a police report has been lodged. The AI's suggestion that the court could be approached to "press for action" fundamentally misrepresented how Singapore's criminal justice system is structured.

The AI had, in short, produced a response that sounded procedurally informed but was built on a chain of assumptions; namely, that a report means a case, that a case means an investigation, that an investigation means the AGC is involved, and that the courts are therefore accessible. Much to the dismay of the client, none of which was true at the relevant point in time. Each assumption in the chain was wrong, and the advice that flowed from them was correspondingly useless.

The client had also arrived with a secondary question: could he sue the taxi driver and his company in the civil courts for the value of the watch? The AI had addressed this briefly, suggesting he could bring a civil claim for the return of the watch or its monetary equivalent. That advice was not wrong in principle, but it was premature in practice. A civil claim for conversion or detainee requires the claimant to establish that the defendant wrongfully interfered with or retained his property.

Without evidence that the taxi driver had in fact taken the watch, rather than that it had simply gone missing, the prospects of a successful civil claim were uncertain, and commencing litigation before the facts were clearer would have been premature and potentially costly.

### **Case 2: An AI-Generated Will That Did Not Account for the Beneficiary Predeceasing the Testator**

A client spoke with the author about a will she had drafted using an AI tool, believing it to be complete and ready for execution. The will named a single executor who was also the sole beneficiary; seemingly a straightforward arrangement that the AI had generated without apparent difficulty and without flagging any concern.

The author identified the problem immediately. The will made no provision for the possibility that the named executor and beneficiary might predecease the testator. If that were to happen, the consequences would be serious on two fronts. First, the estate would be left without an executor as there was no substitute or replacement executor named, and no mechanism in the will to appoint one.

Second, because the sole beneficiary had predeceased the testator, the gift to that beneficiary would lapse. The will contained no provision directing where the estate should go in that event. Depending on the circumstances, the estate or part of it could fall into intestacy, meaning it would be distributed not according to the testator's wishes but according to the Intestate Succession Act, which follows a fixed statutory order of priority that may bear no resemblance to what the testator had intended.

The AI had produced a document that looked like a will, used the correct formal language, and addressed the testator's immediate wishes accurately. What it had not done was ask the forward-looking questions that a lawyer would ask as a matter of course: what happens if your beneficiary dies before you do? Who should step in as executor if your named executor cannot act? Do you have an alternative beneficiary? These are standard contingencies that a competent lawyer, when drafting the will, would have addressed as a baseline.

### **Case 3: A Forcefully Written Letter Built on the Wrong Legal Foundation**

A client drafted a letter of demand that he had generated using an AI tool. The letter was professionally and assertively worded. It had been produced in response to what the client described as a wrongful termination of his engagement by a company he had been providing bookkeeping services to. The AI had taken his description of the situation and produced a document that read like the work of a trained advocate.

The author then explained to the client why his draft could not be used at all. The foundational error was one of legal characterisation. The client had described his situation to the AI as a termination of employment and the AI had treated it as such. The draft letter was built entirely on employment law, which cited wrongful dismissal and framed the entire dispute as a breach of the obligations an employer owes to a worker under a contract of service.

But the relationship between the client and the company was not an employment relationship. It was a commercial engagement; that is, a contract for services, under which the client had operated as an independent contractor providing services to the company. The distinction is fundamental. A contract of service creates an employer-employee relationship, with all the statutory protections that flow from it. A contract for services is a commercial arrangement between two independent parties, governed by contract law and the specific terms agreed between them.

The protections of the Employment Act do not apply. The remedies available, if the engagement was wrongfully terminated, are those available for breach of contract and not the statutory remedies available to an employee. The AI had not asked the client whether he was an employee or an independent contractor. It had taken his use of the word "termination" and built an entire legal framework on an assumption that was incorrect. The result was a letter that cited inapplicable law, asserted non-existent statutory rights and would have immediately signalled to any legally advised recipient and their lawyers that the person sending it either did not understand their own legal position or had not received competent legal advice.

Sending it would have weakened the client's negotiating position before any meaningful dialogue had even begun.

These three cases share a common pattern. In each, the AI produced advice or a document that was internally coherent and presented with confidence, but was either procedurally wrong, substantively incomplete in ways that only a trained lawyer would recognise, built on a mischaracterisation of the legal relationship at issue, or procedurally non-compliant with Singapore-specific requirements. In each, the client arrived with a formed view that the lawyer had to address before substantive advice could begin. And in each, the lawyer's role expanded beyond advising to include correcting errors that the client did not initially recognise as such.

Be that as it may, the productivity gained in using AI has greatly reduced the average hours needed for a lawyer to work on any assignment. And clients are increasingly aware of what AI can do and are beginning to push back on bills that do not reflect the efficiencies available.

### Billable Hour Under Pressure

A research task that once took a junior associate a full day to complete, that is, reviewing case law, synthesising authorities and preparing a memo, can now be substantially accelerated using AI tools. A contract that once required several hours of drafting from scratch can be generated in minutes. When clients know this, and many now do, billing those same hours at the same rate becomes increasingly difficult to defend. In-house counsel at larger companies are already scrutinising bills for research and drafting time with a level of scepticism that was less common only a few years ago.

Some are explicitly asking their external lawyers to confirm whether AI tools were used in the preparation of a piece of work and, if so, to reflect that in the fee. This creates genuine tension within firms. The billable hour has historically served not just as a revenue mechanism but as a proxy for the value of legal work and, for junior lawyers, as the primary measure of productivity. If AI compresses the time required to complete that work, the traditional equation between hours spent and value delivered breaks down. Firms that continue to bill as if AI does not exist risk losing clients to competitors who are more transparent about how they price AI-assisted work.

### Faster Turnaround Time

Clients who understand that AI can accelerate legal work are recalibrating their expectations about how quickly that work should be delivered. A research memo that once had a two-day turnaround is now expected within hours. A contract review that once took a week is expected by the end of the day. A due diligence exercise that once required a team of associates working around the clock is expected to be completed in a fraction of the time.

This shift in expectations is not uniform as complexity, risk, and the specific nature of the matter still dictate realistic timeframes. But the directional pressure is clear and consistent. Clients are setting tighter deadlines, asking why straightforward matters are taking as long as they are, and in some cases using the speed of AI-generated output as a benchmark against which they measure the responsiveness of their lawyers.

For law firms, this creates an operational challenge that goes beyond simply adopting AI tools. It requires rethinking how matters are staffed, how work is allocated between human lawyers and AI-assisted processes, and how teams communicate progress to clients in real time. Firms that integrate AI effectively into their workflows will be able to meet these accelerated expectations without sacrificing quality. Firms that do not will find themselves struggling to explain delays that clients no longer consider acceptable.

The combined effect of these two pressures, namely, on billing and on turnaround time, is accelerating a broader conversation about how legal services are priced, delivered, and differentiated. The firms that navigate this transition well will be those that treat AI not merely as a tool for doing the same work faster, but as an opportunity to redefine what good legal service looks like and what clients should reasonably expect to pay for it.

### Conclusion

AI is changing legal practice in Singapore in concrete and measurable ways in how research is done, how contracts are drafted, how junior lawyers are trained, and how the economics of legal services are structured. It is also changing the nature of client consultations, as lawyers navigate a growing volume of AI-generated information that clients bring with them to their first meeting. And it is fundamentally altering the commercial relationship between lawyers and their clients, compressing the time clients expect work to take and making it harder to justify fees that do not reflect the efficiencies that AI now makes possible.

However, the legal profession in Singapore is not passive in the face of this change. The stakeholders are all engaged in shaping how AI enters legal workflows and what safeguards accompany it. Yet in all these “disruptive chaos”, the Chief Justice’s speech at the recent Mass Call Ceremony provides a useful anchor: the task is not merely to teach lawyers how to use AI, but to ensure that, as technology takes on more of the routine aspects of legal work, even greater emphasis is placed on cultivating what machines cannot replicate; namely, judgment, ethicality, responsibility, discernment, and integrity.

Whether that balance is achieved will depend less on the tools themselves than on the decisions made by firms, institutions, and individual practitioners about how those tools are used and what values guide their use. 🏛️



#### About The Writer

Richard Siaw, R. S. Solomon LLC

*Disclaimer:* The content provided in this article is intended for informational purposes only. The content is not intended to be, nor should it be interpreted as, legal advice or legal opinion. The reader should not rely on the content presented here for any purpose, and should always seek the legal advice of counsel in the appropriate jurisdiction.

# 狮城数字法槌

## 人工智能如何重塑新加坡法律实践

by Richard Siaw



Photo: Magnific

### 人工智能如何重塑新加坡法律实践

新加坡法律行业正在经历深刻变革。人工智能已不再是遥远的未来课题，它已切实融入律师的日常工作——从法律研究、文件起草、谈判磋商到法律意见的提供，无一例外。对于一个承担国际商业、仲裁及金融法律枢纽职能的司法管辖区而言，这一变革的影响深远而重大。

新加坡的独特之处，不仅在于人工智能的采用速度，更在于其背后周密的制度框架。政府、司法机构及专业团体均将人工智能定位为辅助律师的工具，而非取而代之。这一理念正在引导技术如何被引入、规范与传授于整个法律行业。

2026年4月20日，在年度宣誓就职典礼上，首席大法官孙德瑞·梅农（Sundaresh Menon）对人工智能在新加坡法律实践中的意义作出了直接而深刻的评价。

### 法院的视角

人工智能正以惊人速度向前发展，新加坡已站在一个重要的历史节点。其影响已然显现：那些曾被视为基础性事务、作为初级律师必要训练的日常工作，如今可能已被人工智能系统所完成，或至少大幅提速。新

加坡律政部长指出，多达44%的法律工作可由人工智能自动完成，且速度更快、质量更高。

当前律师群体对人工智能的采用规模相当可观。在典礼前数日对所有新录取律师进行的一项调查显示，92%的受访者表示已在工作中使用人工智能。首席大法官对人工智能的能与不能作出了清晰界定：人工智能能够综合处理海量信息、改善知识获取渠道、减轻重复性工作负担，使律师和法官得以专注于更高层次的问题。若运用得当，人工智能具有实质性改善司法行政的巨大潜力。

然而，其局限性同样清晰。人工智能或许能加速分析、模拟专业语言，但它没有价值观念、无法行使良知判断，也无法理解法律裁决对人类的深远意义。法院虽也在探索将人工智能用于案件管理、文件处理和决策支持，但凡涉及法律权利与自由的事项，人工裁决始终不可动摇。

首席大法官的核心信息明确无误：新加坡法律行业必须推进人工智能，别无选择。摆在法律行业面前的问题，是如何在不损害其所维护的专业标准的前提下稳步推进。

## 伦理与监管

为此，新加坡律师公会2026年《人工智能伦理框架》制定了在法律实践中使用人工智能的约束性原则，涵盖透明度、问责制和客户保密三大方面。其核心立场是：人工智能辅助专业判断，而非取代专业判断。首席大法官特别点明了在此背景下最为关键的能力：伦理推理、在不确定条件下的稳健判断、对客户的同理心，以及敢于告知客户其可能不愿听闻之事的道德勇气。这些恰恰是机器无法复制的能力。

值得注意的是，不只是律师在借助人工智能解决法律问题。

### 当客户带着人工智能生成的“法律建议”而来

越来越多的客户在前来咨询之前，已自行借助人工智能完成法律研究，查阅了人工智能生成的权利义务摘要，或根据ChatGPT、Gemini、Copilot等通用工具的回答形成了对自身法律处境的判断。许多情况下，他们来到律师面前时带来的不是疑问，而是结论。然而他们浑然不知，这些结论并不总是正确的。

以下三个案例均为本文作者在实践中亲历，生动呈现了人工智能在实务中引发的各类问题。

### 案例一：无罪行、无调查——检察总长办公室与法院均无从介入

一名客户神情焦虑地来到作者办公室。他曾短暂离开出租车去附近商店购物，将一块崭新的劳力士手表留在背包里，并请求司机代为看管。当他返回车内，本能地伸手去摸背包，却发现手表已不翼而飞。他确信是出租车司机偷了手表，随即强行要求司机陪同前往最近的警察局报案。警方随后对车辆进行了搜查，未发现任何异常，遂将司机放行。

人工智能告诉他：既然已经报警，他可以委托律师向检察总长办公室及法院提交陈情书，要求对出租车司机采取行动。他来到咨询时，俨然认定两个机构已介入其案件，并坚信可以立即施加正式法律压力。

作者不得不逐一厘清多层误解，才能给出任何有效建议。第一个也是最根本的问题：客户误以为警方已受

理其案件，但实际上并未受理，至少没有任何实质意义上的调查行动。仅仅提交警方报告，并不意味着案件已被立案或调查已经启动。调查的启动，须以警方评估现有事实后认定存在刑事犯罪行为前提。

在本案中，这一评估远非显而易见。客户将手表无人看管地留在车内，且未目睹司机取走手表。手表或许确为司机所窃，但并无确凿证据足以认定其有罪。咨询时，警方尚未将此事列为盗窃案件。没有立案，就没有调查；没有调查，就没有可以提交陈情书的案卷。

第二个问题由此而来。即便警方日后立案并启动调查，检察总长办公室在调查阶段同样毫无介入。检察总长办公室的职能是检控——即在警方完成调查后审阅调查报告，决定是否提出指控。在此之前，检察总长办公室既无介入，也无机制接受举报人在调查期间的陈情。在此阶段向检察总长办公室去函，充其量不过是将信件寄错了地址、送错了时机。

第三个问题同样清晰：在未有任何指控提出之前，法院根本无从介入，没有任何司法程序可以启动，没有任何申请可以提出，没有任何诉讼可以开始，仅凭一纸警方报告毫无依据。人工智能建议客户向法院申请“施压”，从根本上误解了新加坡刑事司法体系的运作结构。

简言之，人工智能给出的回答听起来程序严谨，实则建立在一连串错误假设之上：报案等于立案，立案等于调查，调查等于检察总长办公室介入，法院因此可以介入。这将让客户大失所望——这一链条上的每一个假设都是错误的，由此衍生出的建议也毫无价值。

客户还带来了一个附带问题：能否就手表损失向出租车司机及其公司提起民事诉讼？人工智能对此作了简短回应，建议他可提起民事索赔，要求归还手表或赔偿其等价金额。这一建议在原则上并无错误，但在实践中为时尚早。侵占或无因管理之诉要求原告证明被告确实非法侵占或扣押其财物。在缺乏证明出租车司机确实取走手表（而非手表单纯丢失）的证据之前，

民事胜诉的前景尚不明朗，贸然提起诉讼不仅为时过早，代价也可能不菲。

## 案例二：人工智能起草的遗嘱未考虑受益人先于立遗嘱人去世的情形

一名客户向作者咨询她使用人工智能工具起草的遗嘱，自认为已完整妥善、可以执行。该遗嘱指定了一名执行人，此人同时也是唯一受益人——看似简单明了的安排，人工智能毫无困难地生成了该文件，且未提示任何隐患。

作者一眼便察觉了问题所在。该遗嘱对受益人及执行人可能先于立遗嘱人去世的情形毫无安排。一旦发生此种情况，后果将在两个层面上同时显现：其一，遗产将失去执行人——遗嘱中既未指定替代执行人，也未设置任何补充任命机制；其二，由于唯一受益人已先于立遗嘱人离世，对该受益人的遗赠将告失效。遗嘱中没有任何条款指明在此情形下遗产应如何处置，遗产或其部分可能因此落入无遗嘱继承的范畴——即不按立遗嘱人的意愿分配，而须依照《无遗嘱继承法》按固定的法定优先顺序分配，这可能与立遗嘱人的真实意愿大相径庭。

人工智能起草的文件形式完备、措辞正确，也准确反映了立遗嘱人的即时意愿。然而，它所未能做到的，是提出任何称职律师在起草遗嘱时必然会追问的前瞻性问题：如果受益人先于您去世，该如何处置？如果指定执行人无法履职，谁来接替？您是否设有备选受益人？这些均属基本的应变条款，任何称职律师都会将其列为起草遗嘱的基本配置。

## 案例三：措辞强硬、却建立在错误法律基础上的律师函

一名客户带来了他使用人工智能工具起草的一封律师函。函件措辞专业有力，是他在遭遇一家公司单方面终止簿记服务合同后，将情况描述给人工智能，由其生成的文件，读来颇具专业律师风范。

然而作者向客户解释，该草稿完全不能使用。根本性错误在于法律定性有误。客户向人工智能描述其处境时，使用了“被解雇”的表述，人工智能便照单全

收，将整封函件建立在劳动法框架之上，援引“不当解雇”，将整个争议定性为雇主违反劳动合同义务。

但客户与该公司之间的关系并非雇佣关系，而是商业合作关系——即服务合同，客户以独立承包商身份为该公司提供服务。这一区别至关重要：雇佣合同构建的是雇主与雇员之间的关系，附带完整的法定保护；服务合同则是两个独立主体之间的商业安排，受合同法及双方约定条款约束。《雇佣法》的保护不适用于此，若合同遭到违法终止，可主张的救济是违约救济，而非雇员享有的法定救济。

人工智能从未追问客户：你究竟是雇员还是独立承包商？它仅凭“终止”一词，便在一个错误的假设之上构建了整套法律框架。结果是，这封律师函援引了不适用的法律，主张了并不存在的法定权利，任何有法律顾问的对方当事人及其律师一眼便能看出：发函者要么不了解自身法律处境，要么未曾获得过称职的法律建议。

若将此函发出，客户的谈判立场将在任何实质性对话展开之前便已大打折扣。

以上三个案例有一个共同的规律：在每个案例中，人工智能均生成了内部逻辑自洽、措辞自信的建议或文件，但实则程序上存在错误、实质上存在只有受训律师才能识别的重大遗漏、对涉案法律关系存在定性错误，或不符合新加坡的特定程序要求。在每个案例中，客户来访时均已持有成见，律师不得不先行纠偏，才能着手实质性建议。在每个案例中，律师的职责也因此超越了单纯的法律顾问范畴，延伸至纠正客户起初未能察觉的错误。

尽管如此，人工智能所带来的生产力提升，已大幅压缩了律师处理任何委托事项所需的平均工时。客户对人工智能的能力日益了解，并开始质疑那些未能体现效率红利的账单。

## 计时收费模式面临压力

一项曾需初级律师耗费整整一天的研究工作——梳理判例法、综合权威资料、撰写备忘录——如今借助人

工智能工具可大幅提速。一份曾需数小时从头起草的合同，现在几分钟便可生成。当客户知晓这一现实——而许多人已然知晓——按相同工时、相同费率开具账单便愈发难以自圆其说。大型企业的内部法律顾问已对研究和起草工时账单投以前所未有的审视目光，明确要求外部律师说明某项工作是否使用了人工智能工具，并在费用上作出相应反映。

这在律师事务所内部造成了真实的张力。计时收费历来不仅是创收机制，更是衡量法律工作价值的参照，对初级律师而言，也是首要的绩效标准。若人工智能压缩了完成工作所需的时间，工时与价值之间的传统等式便告瓦解。那些行事如同人工智能根本不存在的律师事务所，将面临被更透明定价竞争者抢走客户的风险。

### 交付周期加速

了解人工智能可以加速法律工作的客户，正在重新校准对工作交付速度的预期。曾需两天才能完成的研究备忘录，如今被期望在数小时内提交；曾需一周的合同审查，如今被期望当日完成；曾需一组律师通宵达旦才能完成的尽职调查，如今被期望在极短时间内交付。

这种预期转变并非整齐划一——复杂程度、风险高低及事务的具体性质仍在决定合理的时间框架。但方向性的压力清晰而一贯：客户设定的截止日期越来越紧，越来越多地追问为何简单事务仍需如此之久，有时甚至以人工智能生成内容的速度为基准，衡量律师的响应效率。

对律师事务所而言，这带来的运营挑战不止于单纯引入人工智能工具，更需要重新思考案件如何配员、工作如何在人工律师与人工智能辅助流程之间分配，以及团队如何实时向客户沟通进展。那些将人工智能有效整合进工作流程的事务所，将能够在不牺牲质量的前提下满足这些加速的预期；而那些未能做到的事务所，将难以解释客户不再接受的拖延。

这两重压力——账单层面与交付周期层面——的叠加，正在加速一场更宏观的讨论：法律服务应如何定

价、如何交付、如何实现差异化。能够顺利完成这一转型的事务所，将是那些把人工智能不仅视为提速工具，更视为重新定义优质法律服务内涵、重新审视客户应为何物付费之机遇的事务所。

### 结语

人工智能正在以具体而可衡量的方式改变新加坡的法律实践——从法律研究的方式，到合同起草的流程，到初级律师的培养路径，再到法律服务的经济结构，无不如此。它也在改变客户咨询的本质：律师需要应对客户带来的越来越多的人工智能生成信息，这往往成为第一次会面的首要议题。它更在从根本上重塑律师与客户之间的商业关系——压缩客户对工作完成时间的预期，令那些未能体现人工智能效率红利的收费愈发难以为继。

然而，新加坡法律行业并非面对这一变革的被动旁观者。各方利益相关者均积极参与，共同塑造人工智能进入法律工作流程的方式及其配套保障措施。尽管置身于这场“颠覆性变局”之中，首席大法官在近期宣誓就职典礼上的致辞提供了一个有益的锚点：任务不仅仅是教会律师如何使用人工智能，更在于确保——随着技术承担越来越多的常规性法律工作——人们将更大的重心放在培育机器无法复制的品质上，那就是：判断力、伦理感、责任心、辨别力与正直品格。

这一平衡能否实现，取决于的不是工具本身，而在于事务所、机构和每一位从业者就如何使用这些工具、以何种价值观引领其使用所作出的抉择。 🏠



#### About The Writer

Richard Siaw, R. S. Solomon LLC

本文提供的内容仅供参考。该内容无意也不应被解释为法律建议或法律意见。读者不应出于任何目的依赖此处提供的内容，并应始终寻求适当司法管辖区律师的法律建议。

# The Future of Luxury A Mindset Shift in Health

by Dr Chrystal Fong Chern Ying



## Synopsis:

Luxury in 2026 is no longer defined by rarity or price point alone. It is defined by perceptiveness – the ability to anticipate needs before they surface.

In health, this shift is transformative.

This article will explore how predictive, AI-assisted, relational medicine is emerging as the ultimate luxury asset. Beyond access to treatment, the new benchmark of privilege is access to anticipation – metabolic insight before dysfunction, stress recalibration before burnout, and longevity planning before decline.

### Predictive health is the new status symbol

Over the years of medicine, there has been significant shifts in the health model. Starting from way back from the pre-1600s of humoral and traditional medicine, biomedical model dominance in the 1940s–1970s, public health & chronic disease focus in the 1980s–2000s, recognition of social determinants; rise of preventive medicine, behavioural medicine, and health services research in the 1990s–2000s and from 2000s–present with precision, integration, and health systems,<sup>1</sup> we can appreciate how each epoch redefined what counts as premium care.

Today’s luxury in science and tech is not a single device or elite clinic but an ecosystem – precision genomics, continuous biosensing, AI prognostics, integrated care navigation and bespoke prevention that converts medical knowledge into predictive convenience and time-gain.

Healthcare 4.0 is rapidly reshaping traditional care with digital technologies that touch every stage of the patient pathway: continuous sensors enable 24/7 monitoring for earlier diagnosis and timely intervention; 3D printing promises on-demand, patient-specific therapeutics and implants; surgical and rehabilitation robots enhance precision, consistency and targeted drug delivery; drones extend reach in logistics by transporting medications, samples and emergency supplies to remote locations; and IoT-enabled (Internet of Things), closed-loop systems stitch these elements together for real-time, coordinated care.

Each innovation brings clear strengths – improved access, personalisation, efficiency and outcome predictability – but also challenges in regulation, data security, interoperability, cost and clinician adoption.<sup>1</sup>

### From Concierge Care to Predictive Privilege: Reframing Value and Trust in Luxury Medicine

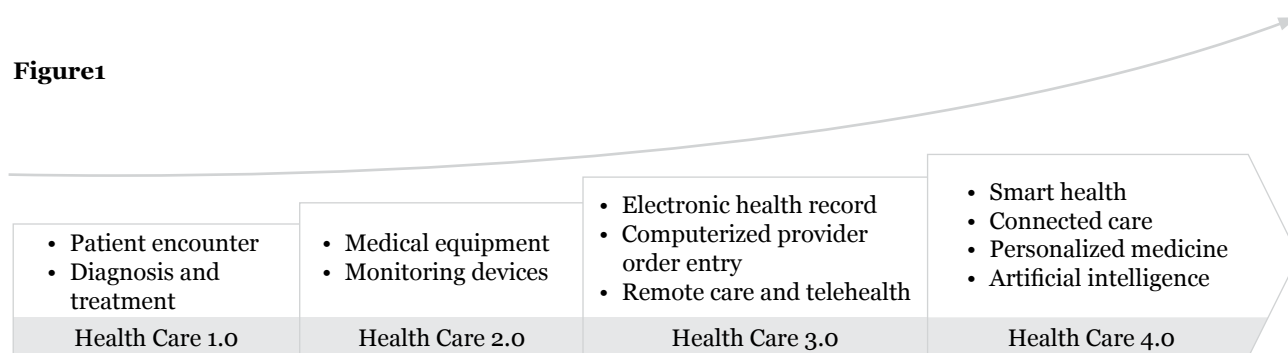
Exploring the luxury business model reveals how scarcity, storytelling and meticulously curated experiences – combined with uncompromising quality, personalisation and discreet service meet the expectations of the modern health-seeking client who demands anticipatory care, seamless convenience, data-driven insights and trustworthiness, and is willing to pay a premium for predictability, privacy and bespoke outcomes.<sup>3</sup>

To meet rising expectations, medical practitioners should translate luxury experience touchpoints into scalable practices within everyday consultations – elevating perception of value without sacrificing efficiency or ethics.

Suggestion of practical steps may include:

- Curate the environment: small design details (lighting, seating, decluttered desk, branded stationery) signal professionalism and care.
- Lead with empathetic discovery: open consultations with questions about lifestyle, aspirations and service preferences to inform tailored recommendations.
- Apply clientelling at scale: collect and structure patient preferences (communication channel, appointment timing, privacy needs) in the record to personalise future encounters.
- Use storytelling intentionally: frame treatments with brief, evidence-based narratives (clinical rationale, expected milestones, real-world outcomes) to build rapport and informed consent.

**Figure 1**



Historical evolution of health care 1.0 to Health Care 4.0.

<sup>2</sup> Li, Jingshan & Carayon, Pascale. (2021). Health Care 4.0: A Vision for Smart and Connected Health Care. IISE Transactions on Healthcare Systems Engineering. 11. 1-14. 10.1080/24725579.2021.1884627.

1. Awad A, Trenfield SJ, Pollard TD, Ong JJ, Elbadawi M, McCoubrey LE, Goyanes A, Gaisford S, Basit AW. Connected healthcare: Improving patient care using digital health technologies. *Adv Drug Deliv Rev.* 2021 Nov;178:113958. doi: 10.1016/j.addr.2021.113958. Epub 2021 Sep 1. PMID: 34478781.  
 2. Li, Jingshan & Carayon, Pascale. (2021). Health Care 4.0: A Vision for Smart and Connected Health Care. *IISE Transactions on Healthcare Systems Engineering.* 11. 1-14. 10.1080/24725579.2021.1884627.  
 3. <https://www.medscape.com/viewarticle/how-luxury-medicine-redefines-value-and-patient-trust-2025a1000r07?form=fpf>

- Offer tiered service options: present clear pathways – from standard evidence-based care to premium concierge elements (longer visits, coordinated specialists, expedited scheduling) – so patients choose their comfort level.
- Communicate clearly and accessibly: translate technical details into plain language, summarise next steps, and confirm understanding before the patient leaves.
- Leverage digital touchpoints: secure messaging, curated educational content, and simple care plans reinforce continuity and perceived attentiveness.
- Systematise follow-up: timely post-visit check-ins (message or brief call) and proactive reminders increase satisfaction and retention.
- Balance exclusivity with ethics: avoid misleading claims or pressure; ensure all marketing and testimonials comply with regulations and preserve patient confidentiality.
- Train the team: front-desk, nursing and admin staff should reflect the same service standards – consistency is essential to the luxury experience.

These measures let clinicians deliver a premium feeling – connection, clarity and convenience – within routine

practice, aligning care with what discerning, health-seeking clients now expect.

**From Plush Suites to On-Demand Care: How Convenience Became Healthcare’s New Luxury**

In a fast-paced era where AI and instant tech put services and information a click away, attention spans and patience are shrinking – expectations for “now, on my terms” have become the norm. Healthcare is not immune: patients demand immediacy, seamless digital access and personalised convenience, pushing clinicians and systems to compete on speed, clarity and user experience as much as clinical excellence. Luxury is no longer defined by elite services and plush facilities alone; it’s measured by who can deliver timely, tailored care on the patient’s terms.<sup>4</sup>

Modern health consumers make decisions driven by a blend of values and pragmatism: respect, clear communication, and attention to detail rank as highly as clinical credentials. They research thoroughly – comparing outcomes, reviews, pricing and convenience across platforms – and weigh short-term costs against long-term value, preferring providers who offer transparent pricing, predictive insights and care plans that prevent escalation. Trust is earned through consistent, personalised touchpoints (timely responses, clear follow-up, and tailored advice), social proof (testimonials, clinician reputations) and seamless digital experiences that reduce friction. Ultimately, patients



4. <https://conciergemedicinetoday.org/2026/02/10/editor-today-luxury-in-healthcare-doesnt-necessarily-mean-what-you-think-it-does/>

choose providers who deliver predictable outcomes, respect their time and agency, and make health an accessible, controllable investment rather than a reactive expense.

### **Has the Art of Doctoring Been Eroded? Reclaiming the Human Bond in Healthcare**

At the heart of healthcare lies empathy, supported by a constellation of core values that guide practice: respect and compassion for each person; beneficence and nonmaleficence – doing good while avoiding harm; and respect for autonomy, dignity, and confidentiality. Providers commit to justice and stewardship, ensuring fairness and responsible use of resources, while upholding professionalism, competence, integrity and accountability in every encounter. Transparency, clear communication and patient-centeredness foster trust and shared decision-making, complemented by cultural humility, collaboration across teams, a relentless focus on safety, and a commitment to continuous learning and improvement. Together these principles form the ethical and practical foundation of high-quality, trustworthy care.

It's easy to assume that a Healthcare 4.0 tech stack plus a plush clinic equals luxury medicine – but technology and luxe surroundings alone don't deliver meaningful care; true premium medicine pairs predictive tools and comfort with continuity, empathy, ethical stewardship and genuine patient partnership.

Data and algorithms can flag risk, forecast decline, and optimise logistics, but they cannot replace context. Clinicians who know a patient's history, values, social circumstances and goals are uniquely positioned to interpret noisy signals, prioritise interventions and translate probabilistic outputs into actionable, humane plans. That interpretive judgment transforms convenience into meaningful care.

Relational medicine reframes alerts and dashboards as starting points for conversation rather than as directives. A continuous glucose or heart-rate deviation is most useful when discussed within the patient's lived routine; an AI risk score only has purchase when the clinician co-authors a feasible prevention pathway with the patient. This collaborative approach strengthens adherence, reduces unnecessary interventions, and mitigates alarm fatigue by focusing attention where it truly matters.

The human element also preserves trust and dignity in the face of increasing automation. Empathy, clear communication and shared decision-making build the psychological safety patients need to disclose sensitive

information, accept recommendations, and sustain behaviour change. Teams that integrate clinicians, care coordinators, behavioural health specialists and digital navigators can offer both the technological benefits of predictive systems and the relational continuity that converts signals into sustained outcomes.<sup>5,6</sup>

Finally, embedding relational principles requires intentional investment: training clinicians in narrative competence, workflow redesigns that protect face-to-face time, incentive models that reward longitudinal outcomes, and metrics that capture patient-reported experience as well as biometric results. When technology is deployed to extend – not replace – the therapeutic relationship, predictive privilege becomes more than a status symbol; it becomes a scalable pathway to fairer, more effective care that patients actually trust and use.

### **Predictive Privilege with a Human Touch: Recasting Luxury as Trustworthy, Accessible Care**

True premium care in the era of predictive health blends foresight with the human bond. Systems and clinicians must invest in interoperable tech, evidence, and infrastructure while protecting face-to-face time, training narrative competence, and aligning incentives to reward longitudinal outcomes and patient experience. When predictive privilege is tethered to stewardship, empathy and accessibility, luxury medicine becomes not merely an exclusive status but a scalable model for trustworthy, effective care that patients will both pay for and rely on. 🌱



#### **About The Writer**

*Dr. Chrystal Fong Chern Ying (MBBS Melbourne, FRACGP) is a dedicated family physician at Asia HealthPartners, under SAM Holdings in Singapore. Passionate about preventive care and holistic wellness, she integrates lifestyle medicine, health coaching, and exercise prescriptions into her consultations to help patients achieve sustainable health outcomes. Featured in Britishpedia's Successful People in Malaysia and Singapore and endorsed by Health365, Dr. Fong champions wellness through both her professional practice and personal lifestyle. She holds certifications in Wellness and Behaviour Modification and is an active member of multiple medical associations, including the Singapore Society of Lifestyle Medicine and the American College of Lifestyle Medicine. Beyond the clinic, she inspires through sports communities and social media, advocating for healthy living as a daily habit. With a keen interest in longevity and medical innovation, Dr. Fong is shaping the future of healthcare – one lifestyle change at a time.*

*Disclaimer: The health information in this article represents the author's personal opinions. It does not constitute medical or professional services. Always consult your doctor or qualified healthcare provider if you have any specific healthcare needs.*

5. Topol, E. (2019). *Deep medicine: How artificial intelligence can make healthcare human again*. Basic Books.  
6. Lantos JD. The Lost Aura of the Physician in the Age of Artificial Intelligence. *JAMA*. Published online March 02, 2026. doi:10.1001/jama.2026.0946

# 40MXP MITAN

# The Future of Luxury Lives at Sea

by Alexis Toh



Photo: Kerem Sanliman

There is a quiet shift unfolding in the world of luxury, one that moves away from excess and towards meaning, from spectacle to intimacy. In this new landscape, the ultimate indulgence is no longer defined by what one owns, but by how one lives. With the unveiling of the 40MXP MITAN, Numarine captures this evolution with remarkable clarity, presenting a yacht that speaks not of grandeur alone, but of connection, freedom and time well spent.

The name itself offers a glimpse into its philosophy. “MITAN”, drawn from Hindi and Nepali, refers to a chosen companion, someone embraced as family. It is a fitting identity for a yacht conceived by a family owner, designed around the idea of shared journeys and extended time at sea. Here, luxury is not performative. It is deeply personal, shaped by relationships and the moments that unfold between them.

On board, this philosophy is expressed through thoughtful design rather than ostentation. Six staterooms accommodate up to twelve guests, anchored by a full-beam master suite on the main deck. Two adaptable cabins shift effortlessly between roles, a children’s sanctuary, a guest retreat, or a private workspace, mirroring the fluid lifestyles of modern owners. It is a yacht that evolves with its occupants, rather than dictating how they should live.

Yet it is the exterior architecture that defines 40MXP MITAN’s character. The stern unfolds across three levels,

forming a seamless progression from dining terrace to lounge, and finally to a beach club that opens directly onto the sea. A bespoke pool sits at the heart of this composition, creating a space where conversation, leisure and the ocean itself coexist. The experience is intuitive and unforced, where the transition from table to water takes only moments, and where the horizon is always within reach.

Inside, a restrained palette of stone, wood and glass replaces ornamentation with quiet sophistication. These materials are chosen for their endurance as much as their beauty, ensuring that the yacht retains its composure even after weeks at sea. It is a subtle yet powerful statement, “the future of luxury is not fleeting, but lasting”.

Beneath its serene exterior lies true capability. With a 6,000-nautical-mile range, 40MXP MITAN is built for long-range exploration, allowing owners to cross oceans or drift between remote anchorages with ease. Stabilisation systems and refined acoustic engineering ensure that even in motion, or at rest, the experience remains one of calm and quiet.

As 40MXP MITAN embarks on her journey towards Mexico, she embodies a new definition of luxury, one that privileges experience over excess, presence over pace. In this future, the greatest luxury is not simply to travel the world, but to share it, slowly and meaningfully, with those who matter most. 🌊

# Free Your *Mind.*

*Feel Your Life. And Live Well.*

*Your body has been trained for years.*

*Your mind has never been trained once.*

*Until now.*



---

The world's first Smart Headset for mental wellness.

For people who already take care of their body and are finally ready to take care of their mind.

---

## Contactless EEG

WEARABLE DEVICE

Unlocking the design paradigm no one else could solve.

## 4 yrs

R&D VALIDATION

Validated by monks, practitioners, and neuroscientists tested with global research teams in the U.S. and Japan.

## 1

ALL IN ONE

The only device that trains the body and mind in real life.

---

# Three dimensions of the human mind measured.



- **STRESS**  
See hidden stress before it surfaces.
- **AWARENESS**  
Present or just alive? Presence Moment, real-time.
- **THOUGHTS**  
Focus depth and cognitive quality all day.



## SPECIFICATIONS

EEG	250 Hz · 24-bit · 1 channel · CMS/DRL grounding · Hybrid through-hair electrode system		
IMU	50 Hz · 12-bit · 6-axis	WATER & DUST RESISTANCE	IP64
PPG	100 Hz · 16-bit · 1 channel	IP	2 Patents
BLUETOOTH	BLE 5.3	WEIGHT	100g
OPERATION TIME	8 hours continuous	SHIP	February 2027

## PRICING

<p>STANDARD</p> <p><i>Alpha One (Beta)</i> <i>Titanium Grey</i></p> <p><b>USD 1,299</b></p> <p>Max 5 units per order</p>	<p>LIMITED EDITION</p> <p><i>Alpha One (Beta)</i> <i>Champagne Gold</i></p> <p><del>USD 1,888</del></p> <p><b>USD 1,299</b> 30% Discount — WAD</p> <p>Max 5 units per order Limited 1,000 units</p> <p><i>Free Hardware Upgrade. When Alpha One or Alpha Pro launches, we replace your device. Once. Free. Upon request.</i></p>
------------------------------------------------------------------------------------------------------------------------------	----------------------------------------------------------------------------------------------------------------------------------------------------------------------------------------------------------------------------------------------------------------------------------------------------------------------------------------------

**FREE GIFT WITH PRE-ORDER**  
**Neuro Soundwave Device**  
 Valued at US\$599 · Shipped within 2 weeks of preorder



"The only device that knows your mind better than you do."